



Galaxy Premium Processor

Operator's Manual



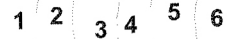
2000 Bowser Road
Cookeville, TN 38506
www.CollinsMfgCo.com
800-292-6450

PRODUCTS PERFORMANCE INTRODUCTION

Infrared radiation is one of the broadest electromagnetic wave radiation in the nature. In normal environment, all objects will bring itself to ruleless movement by its own molecule and atom, and will also ceaselessly radiate the hot infrared energy. The more acutely the molecule and atom moves, the more energy it will radiate. On the contrary, the less energy it will radiate. All objects will produce the infrared by ruleless movement of its own molecule and atom when it is over absolute zero. With the infrared detector, the power signal radiated from an object will be transformed into electronic signal, the output signal of the imaging equipment can, one by one, completely simulate the temperature interspace distribution of the scanned object's surface, after disposal by the electron system and send to the display screen, then it will come out the heat state image picture corresponding to the surface heat distribution of the object. By this way, it can carry out temperature test and imaging the heat state picture of the target from far away, and can also do the analyse and estimation.

In the latest 20 years, originally from the infrared principle, a non-touching infrared temperature test technique gets developing speedy, the capability comes to be more and more perfect ceaselessly, and the function boost up ceaselessly. Comparing with the temperature test by a touching way, the infrared temperature test has its advantages, including quick response, non-touching, safety, long lifetime and so on. Now in the whole world, the infrared test technique is the focus, hotspot and difficulty of products development for hair and beauty trade. It integrates itself with all the techniques including photoelectricity imaging, computer and image processing, thus to estimate correctly the temperature distribution on the surface of the object by receiving the infrared radiation sent out from an object. Owing to its own molecular movement, all objects will ceaselessly radiate out the infrared heat energy, and will form a definite temperature field around the object. By absorbing this infrared radiation energy, it will test the temperature and temperature field distribution on the surface of the object to estimate correctly the temperature of the object.

"All for the best" is our foundation root. DL.H182 was developed with unremitting efforts of all our engineers and technicians for many years. Comparing with any one of previous products, the most outstanding improvement of our DL.H182 is: we use the infrared temperature test module to test hair temperature, so as to alter the previous situation that we only depended on the temperature controller to uniformly control the heating temperature and ignored the temperature difference of hair itself among every users. For hairdressing, DL.H182 will be more heart to heart, reasonable and precise. Including human body, all objects can radiate out the infrared, and these infrared energy is just the embodiment of object temperature. So by test of infrared radiation of hair itself, it can test its surface temperature correctly, this is the external basic principle why infrared temperature test module can test temperature. By non-touching test of hair temperature, this product avoids the effect on hair itself and can test the instant temperature of hair. And this temperature test is with a very high precision, and it can differentiate 0.1* or even more precise.



1 2 3 4 5 6

Full-automatic Infrared Hair Drying Machine

Please read details of Operation Manual before using the products. Thanks!

PRODUCTS PERFORMANCE INTRODUCTION	1
BEFORE USING	2
MODES-APPLICATIONS AND FIXED PROGRAMS	3
OPERATION	3
CAUTIONS AND MAINTENANCE	5
STAND INSTALLATION INSTRUCTION AND PARTS LIST	5
INSTALLATION OF WALL MOUNT ARM	6
SKETCH MAP	6
GUARANTEE CARD	6

BEFORE USING

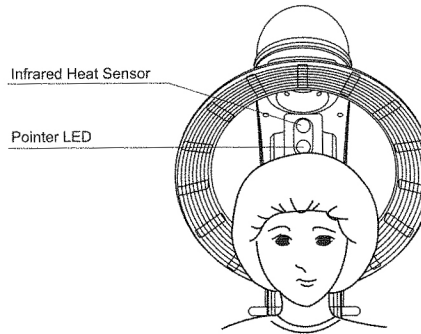
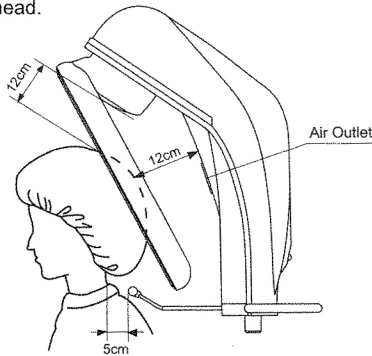
AC220V-240V 50-60Hz 900W

AC100V-120V 50-60Hz 900W

To get the best results out of Spaceball and to make customers feel comfortable under Spaceball, please use it at the correct position.

Correct Position

Adjust the height of Spaceball by moving the inner sliding pipe or the wall mount arm up or down, set the distance from the rotating point to the head to be about 12 cm, and about 12 cm to the front point of infrared sensor. The distance between the neck and the guide bar is about 5 cm. Press the Infrared Orientation Indicator Key to make the infrared irradiate the center of customers' head.



CONTROL PANEL

2 3 4 5 6

1. Temperature Level Indicator Light

It shows the setting temperature. 7 levels in total. Each light shows 1 level.

Level 1	Level 2	Level 3	Level 4	Level 5	Level 6	Level 7
40°C	45°C	50°C	55°C	60°C	65°C	70°C

2. Time Digital Display / Swing State Angle Display

Usually it shows the working time.

It can also display the angle if you press twice the Swing Program Selection Key. It shows angle from "A9" (180°) to "A2" (40°). The angle is 20° different between a pair of neighbouring number.

3. Temperature Level Adjusting Key

Pressing this key can change the Temperature Level. 7 levels in total.

4. Time Setting Key

Pressing this key can change the setting time. Pressing up or down key one time can lengthen or shorten 1 minute. Pressing up or down key for over one second can lengthen or shorten 5 minutes. In the Swing program, you can also set the angle by pressing this key.

5. Infrared Orientation Indicator Key

Press this key, the infrared temperature test position is irradiated for 10 seconds. It can

use to be the orientation standard after confirm.

6. Operation Program Selection Key

For different requirements, different programs are available and can be chosen. During operation, time and temperature can be changed by yourself at will.

7. Swing Program Selection Key

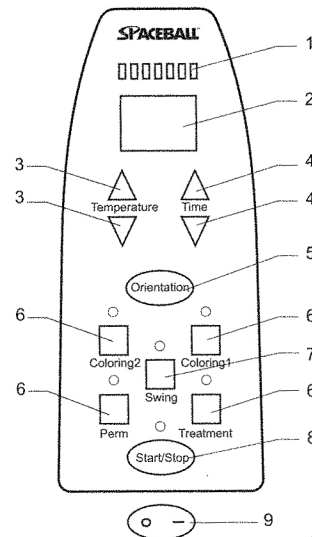
If you don't need the infrared convoluting or if you want to swing at different angle, you can press this key. Keep pressing this key twice, the angle can be adjusted by yourself at will.

8. Start/Stop Key

Press this key to start every program operation. During operation, press it to stop every program.

9. Power Switch

The main power switch: Press — to turn on; Press O to turn off.



MODES-APPLICATIONS AND FIXED PROGRAMS

Both the temperature and time in the following table are the value fixed before leaving factory.

Operation Mode	Application	Time	Temperature	Angle	Temperature control way
Coloring 1	Adjust time and temperature to suit to type of dye, quality of hair, and technique of hairdressers.	10 min	50°C	Rotation	Infrared computer control
		Random setting		---	
Coloring 2	Adjust time and temperature to suit to type of dye, quality of hair, and technique of hairdressers.	10 min	55°C	Rotation	
		Random setting		---	
Perm	Used for heating perm lotion. Adjust time and temperature to suit to the hair condition, lotion and hair crimp technique.	10 min	50°C	Rotation	
		Random setting		---	
Treatment	Adjust time and temperature to suit to type of shampoo, quality of customers' hair.	10 min	55°C	Rotation	
		Random setting		---	
Swing	Do partial adjustment when coloring and marcel / perm.	10 min	55°C	Angle swing	Operating by programmed time controlling
		Random setting			

Remark:

1. Use the infrared to test the temperature of the customers' hair directly, it can ensure the temperature of the hair is always controlled at the set temperature.
2. After finishing operation, although it stops heating, the circular heater will still speed-down rotate for 2 minutes.
3. After finishing working program, it will cool down for 2 minutes. It will stop cooling if you turn off the power switch in the midway or during operation.

OPERATION

I. Operation order

1. Set the machine at the correct position

■ If the circular heater is not at a correct position, Spaceball will not perform at its optimum performance.

2. Turn on the power switch

■ After turn on the power switch for 1 minute, the temperature indicator light and the time digital display will illuminate.

3. Select a program

■ Choose different programs according to the customers' requirements.

■ The program selected will illuminate and the setting time and temperature will be also shown.

■ After starting and during the operation, the time and temperature can be alternated.

4. Start /Stop Key

■ After starting, press this key, the circular heater starts rotation, all indicator lights will illuminate, including the indicator light, power indicator light and the selected program indicator light.

■ During operation, press this key, the circular heater will stop heating and rotation immediately.

5. During Operation

■ During operation, Time Digital Display shows the remainder time. The radix point will coruscate at a frequency of one-second-alternation.

■ During operation, the time and temperature can be alternated.

■ Press the Start/Stop Key to stop operation, you could change to another program and begin next operation.

6. Time Up

■ When programmed time is up, timer will show "0", the time electronic chime will sound and it will stop heating. But the circular heater will still speed-down rotate, after 2 minutes cooling time, the electronic chime will sound again and the circular heater will stop rotation.

7. Turn off the power switch after finishing work

II. Swing operation

1. Adjust Position

■ Adjust the angle of swing program. It can be adjusted freely when it won't hit or close to the customer's head and it won't be in your way.

2. Swing Selection

■ After turn on the power, press the Swing Program Selection

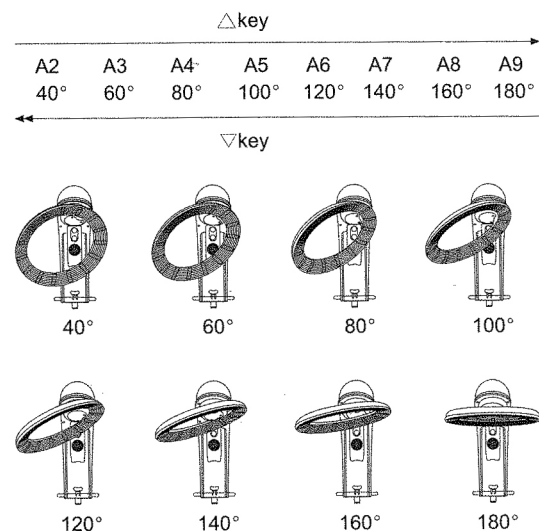
Key to confirm the set temperature and time, press this key again, then the time display will be alternated to show the rotation angle.

3. The setting and alteration of time, temperature and angle

■ According to the customers' hair and the type of lotion to alternate the time, temperature and angle.

■ Using the Time Setting Key to alternate the time, and using the Temperature Level Adjusting Key to alternate the temperature.

■ Using the Time Setting Key to alternate the angle by pressing the \triangle / ∇ key.



III. How to set program at your will

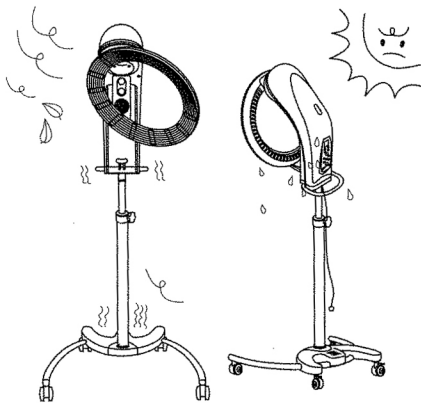
After you press the Operation Program Selection Key, the standard fixed value can be alternated. Then turn off the power, these newly set value can be kept in memory.

- 1) Select the program to be set.
- 2) Alternate the time setting and temperature.
- 3) Then press the Operation Program Selection Key and last for 3 seconds, the electronic chime will sound, the indicator light will illuminate and the optional setting is done.
- 4) When your hand moves away from the Operation Program Selection Key, all the settings will be finished.
- 5) Restart the power switch and confirm whether the program has been set at your will.

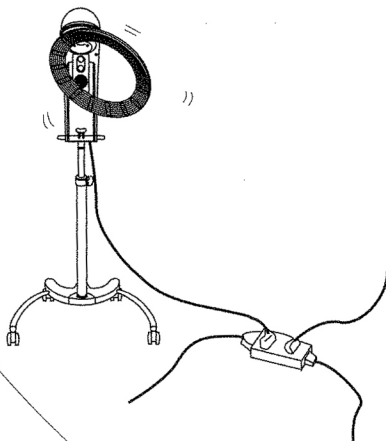
CAUTION AND MAINTENANCE

I. Cautions

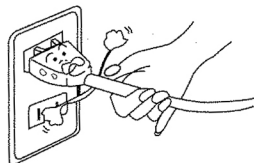
1. Please avoid exposing and working the machine at extreme hot, cold or wet conditions. It is best to use in 10°C-25°C environment.



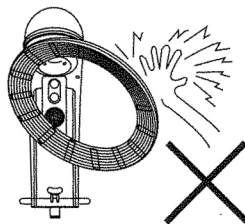
2. Spaceball needs a single outlet with at least 10A and the ground wire for itself. Please connect Spaceball with a correct outlet and do not share with other appliances.



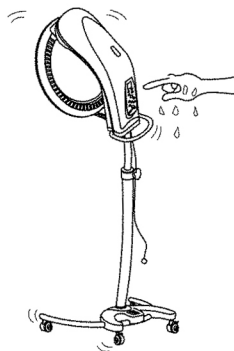
3. Do not disconnect the power plug by pulling the cable. Hold the plug and then pull.



4. Do not move the Spaceball by pulling only the power cord or grabbing the circular heater.



5. Do not wet Spaceball, even don't hang a wet towel on the circular heater. Do please keep the machine dry.



6. Do not insert the pin or any metal things into the clearance of the machine, otherwise it would be easy to get an electric shock or short circuit.

7. The infrared does not have any bad effect on human body. But if some customers feel any unwell or comfortless caused by the temperature, please stop using this machine immediately.

8. If the machine are used for some time or the malfunction comes out, you must ask the professional to repair it. Do not disassemble it by yourself.

9. If the power cord has any damage, to avoid danger, please ask the manufacturer or its repair department or other professional to change it.

10. Please keep children away when you operate the machine.

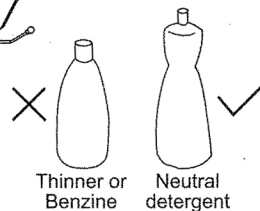
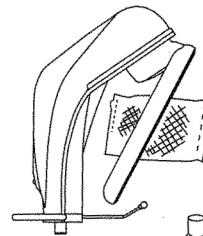
II. Maintenance

1. Use dry and soft cloth to clean plastic, net, plate and painted surface.

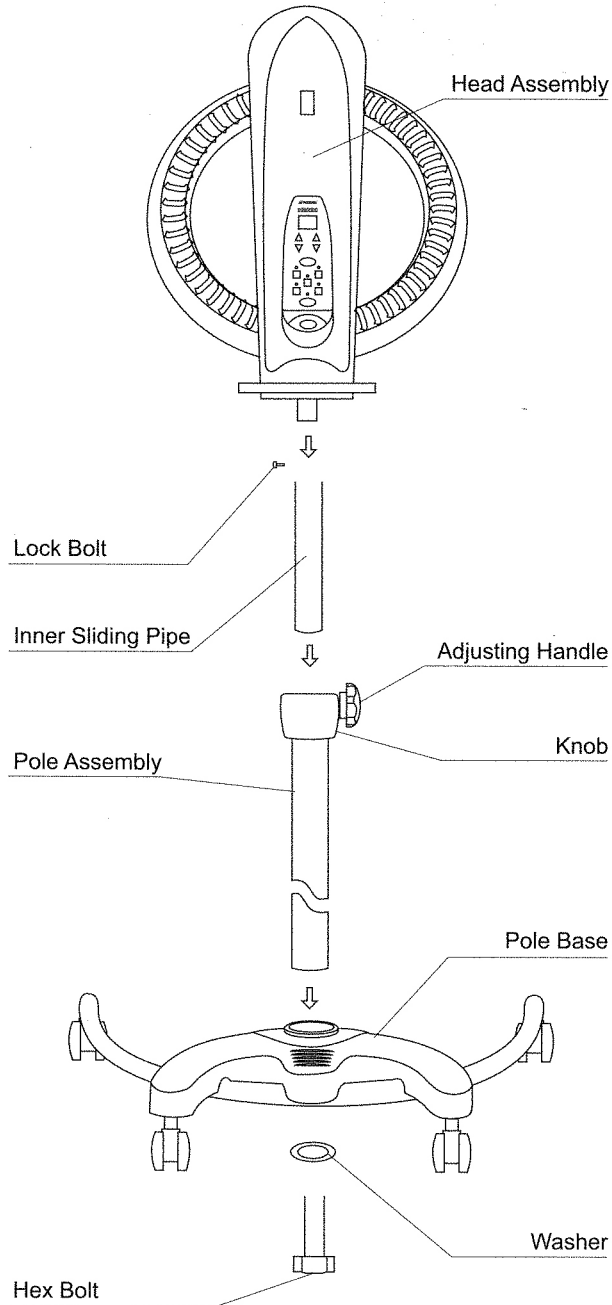
2. Bedew cloth with neutral detergent and wipe to remove stubborn stains and dirt.

3. Use only mild neutral detergent.

4. Must keep the infrared magic eye clean, otherwise the Spaceball cannot control the temperature correctly.



STAND INSTALLATIONS INSTRUCTION AND PARTS LIST



5 6

INSTALLATION OF WALL MOUNT ARM

1. BEFORE INSTALLATION

1-1 WALL

The wall must be sturdy enough to support the arm assembly and Spaceball.

1-2 HEIGHT

Recommended height of wall bracket is 1840/1950mm from floor to the bottom of the bracket.(Fig.1)

1-3 ELECTRIC SOURCE

An electrical outlet with proper power must be prepared on the wall at the distance within 500mm from the wall bracket.

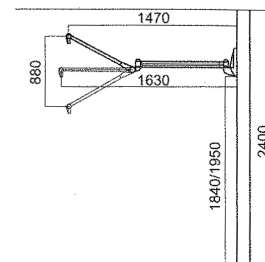


Fig.1

2. INSTALLATION OF WALL PLATE AND WALL BRACKET

2-1 The wall plate and wall bracket are attached together with bolts before the factory delivers the Spaceball. (Fig.2)

2-2 With the supplied wrench, loosen the bolts and remove the wall plate(Fig.3)

2-3 Use the wall plate as a template and drill three holes on the wall. Please refer to Fig.3 for the correct position of the three holes. The size and depth of the holes shall be in accordance with the bolts supplied.

2-4 Attach the wall bracket to the wall with the bolts, then fix it with nuts.(Fig.4)

2-5 Attach the wall bracket to the wall plate, then tighten the bolts.(Fig.5)

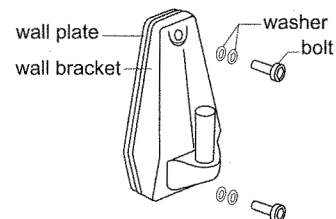


Fig.2

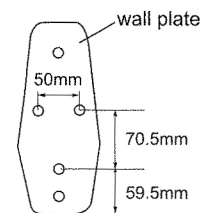


Fig.3

CAUTION!

As wall plate and wall bracket are subject to a large load, please make sure that the wall plate is installed correctly and firmly.

To expedite the installation of wall mount arm, a wrench will be supplied with the DL.WH182 wall-mounted hair drying machine.

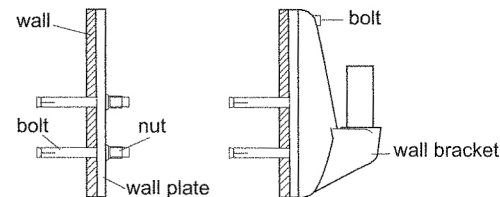


Fig.4

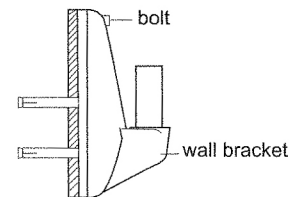
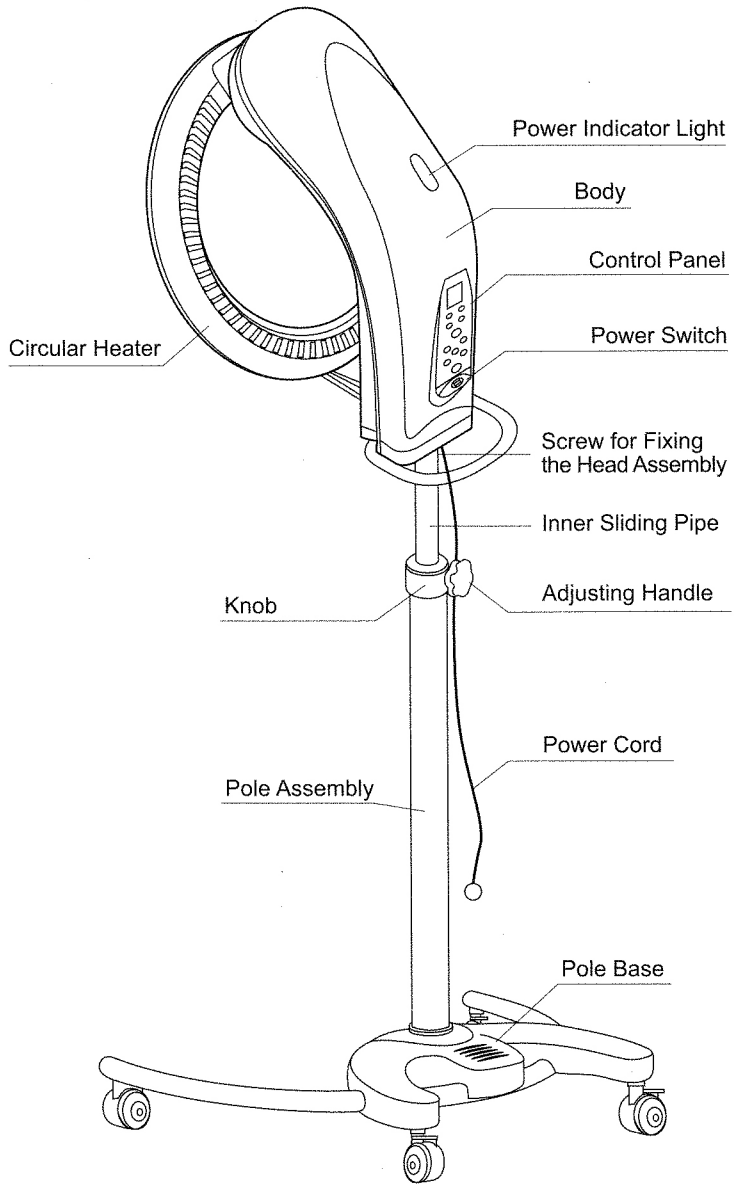


Fig.5

SKETCH MAP

SKETCH MAP



GUARANTEE CARD

GUARANTEE CARD

MODEL:

MACHINE BODY NO.:

DATE OF PURCHASE:

CONTACT PERSON:

CONTACT TELEPHONE:

CONTACT ADDRESS:

REPAIR ITEM:

DATE:

Dear Users:

Thank you for using our products. Ensuring you are pleased and assured to use our products, please fill in the GUARANTEE CARD carefully when you buy our products. From the date of purchase, you will have three months of free repair after-sales service due to quality problem, but not due to man-made damage.

Special attention! When selling the goods, customers and distributors shall fill in the guarantee card, giving the machine body No. and sales date. After confirmation by both parties, customers will have this free repair after-sales service.

MODEL:

DATE OF PURCHASE:

MACHINE BODY NO.:

CONTACT PERSON:

CONTACT TELEPHONE:

CONTACT ADDRESS:

DATE	PROBLEMS CAUSE	REPAIR DATE	REPAIRMAN SIGNATURE

THE ABOVE SHEET IS KEPT BY
THE MANUFACTURER OR AGENTS.

THIS SHEET IS KEPT BY CUSTOMERS.

SKETCH MAP

