

### Finish Schedule – 851-101-1

Face Color - Satin Stainless  
 Top Color - Satin Stainless  
 Toe Color - Satin Stainless  
 Reveal / Accent Color - Satin Stainless  
 Hardware - Hafele 117.05-630 Pulls  
 Interior - White  
 Other (Specify) -

### General Notes:

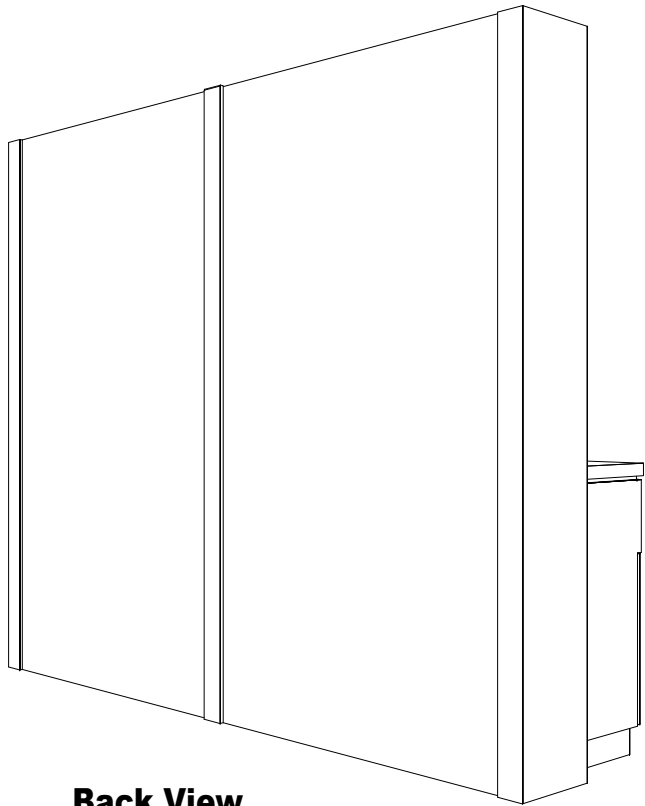
1. All counter tops are to be made removable wherever possible.
2. Items must be broken into manageable sections For Shipping. Mark For Ease Of Reassembly.
3. Install Shipping Cleats Wherever Possible To Prevent Shipping Damage.
4. Purchased items Must Be Trial Fit Before Shipping.

**Collins** Collins Manufacturing  
 2000 Bowser Road  
 Cookeville, TN 38506

Title: **Free Standing Color Center**

Size: **NTS** Drawing Number: **72095** Drawn By: **Zane**

Date: Sheet



**Back View**



**Finish Schedule – 851-101-1**

**Face Color - Satin Stainless**  
**Top Color - Satin Stainless**  
**Toe Color - Satin Stainless**  
**Reveal / Accent Color - Satin Stainless**  
**Hardware - Hafele 117.05-630 Pulls**  
**Interior - White**  
**Other (Specify) -**

This drawing is the property of Collins Manufacturing Company and is protected under copyright law.

- Approved as drawn.**
- Approved w/ changes noted.**
- Not approved - re-submit.**

Signature \_\_\_\_\_

Company \_\_\_\_\_ Date \_\_\_\_\_


**Collins Manufacturing**  
 2000 Bowser Road  
 Cookeville, TN 38506

Title: **Free Standing Color Center**

Size: **NTS**      Drawing Number: **72095**      Drawn By: **Zane**

Date: \_\_\_\_\_      Sheet **15 of 24**