

# MAESTRO<sup>®</sup> PEDICURE SPA

## OWNER'S MANUAL



  
**CONTINUUM<sup>®</sup>**  
Opposite of Ordinary

Continuum Footspas, LLC ✉ P.O. Box 363 Brookfield, WI 53008  
Toll Free: 1 877 255 3030 ✉ Telephone: 262 754 4900 ✉ Fax: 262 754 4901 ✉ [continuumfootspas.com](http://continuumfootspas.com)



# MAESTRO<sup>®</sup> PEDICURE SPA

## Limited Warranty

Continuum Footspas has designed and manufactured The Maestro Pedicure Spa to the highest standards. Accordingly, Continuum Footspas expressly warrants The Maestro Pedicure Spa as follows:

To the original owner of The Maestro Pedicure Spa, Continuum Footspas may repair or replace, at its option, any Maestro Pedicure Spa found to be defective in material or workmanship upon inspection by a factory authorized representative of Continuum Footspas. This limited warranty covers the following:

- **Components/Parts (Excluding Shipping and Handling)**
- Solid Surface Basin: Five (5) years from date of shipment.
- Roller Massage System: One (1) year from date of shipment.
- Vibro-Massage System: Two (2) years from date of shipment.
- Other Parts/Components: Two (2) years from date of shipment.
- Purchased Replacement Parts: Ninety (90) days from date of shipment.
- Purchased Accessories: Ninety (90) days from date of shipment.
- **Labor** - One (1) year from the date of shipment. Continuum Footspas will cover reasonable labor costs associated with the installation of replacement parts found to be defective in material or workmanship upon inspection by a factory authorized representative of Continuum Footspas. **NOTE EXCEPTIONS BELOW. No labor costs or replacement parts will be covered under this Limited Warranty, if at the sole discretion of Continuum Footspas, it is determined a failure was caused by negligence, accident or improper use, improper installation or lack of proper maintenance as outlined in the Owner's Manual.**

The exchange of a Maestro Pedicure Spa is limited to supplying a replacement Maestro Pedicure Spa of equal style. Owner is responsible for all labor and shipping costs necessary to replace a Maestro Pedicure Spa.

**NO CONSEQUENTIAL, INCIDENTAL, CONTINGENT, INDIRECT, SPECIAL OR OTHER DAMAGES WILL BE ALLOWED WHATSOEVER.** This limited warranty is null and void if the Maestro Pedicure Spa is removed from its original installation, or is not installed in accordance with specifications of Continuum Footspas, or national, state or local codes, regulations and ordinances. Furthermore, this Limited Warranty is null and void if the Maestro Pedicure Spa is subjected to improper installation or maintenance, negligence, improper cleaning or any other circumstances beyond Continuum Footspas control. In order for your Limited Warranty to be valid, your Maestro Pedicure Spa must be installed by a licensed professional in accordance with Continuum Footspas installation instructions.

### EXCLUDED FROM LIMITED WARRANTY:

- 1) Unauthorized repairs.
- 2) Damage due to freight, accident, natural disaster and/or abuse.
- 3) Staining, fading or discolorization of the seat, seat back, armrests, leg supports and footrests.
- 4) Damage or malfunctions due to improper installation including but not limited to, failure to comply with all national, state and local plumbing, electrical and building codes.
- 5) Fading, discoloration or staining of any part due to improper water additives or harmful cleaning agents or chemicals.
- 6) Damage to drain pump due to obstruction in drain hose and/or debris in pump impeller housing.

### Parts for which Labor is NOT COVERED - Parts Noted Below Are Simple to Replace and DO NOT Require a Service Technician.

- Jet cover and/or impeller
- Faucet Cartridge and/or Fill-Sprayer
- Jet Assembly
- Footrest/Leg Supports
- On/Off air actuated button
- Handheld chair/massage control
- Roller Massage or Vibro-Massage Systems

*For service or information regarding this limited warranty, please contact.*

Continuum Footspas, LLC • P.O. Box 363 Brookfield, WI 53008

Toll Free: 1 877 255 3030 • Telephone: 262 754 4900 • Service: 262 777 2248 • Fax: 262 754 4901 • MyContinuumPedicure.com

This Limited Warranty is to the original owner and is not transferable. The original owner agrees by using The Maestro Pedicure Spa the obligation of Continuum Footspas shall not extend to indirect or contingent damages or injury. Furthermore, the obligations of Continuum Footspas are limited to those set forth herein. This limited warranty is the exclusive remedy and is in lieu of all other warranties, express or limited, including, but not limited to, any implied warranty of fitness or merchantability for a particular purpose. No distributor, dealer or other person has the right or authority to bind Continuum Footspas to changes to this limited warranty. Consequently, Continuum Footspas is not responsible for such warranties or representations.

### ADDITIONAL PROVISIONS

- Any assistance Continuum Footspas provides to the original owner above and beyond the scope of this limited warranty does not constitute a waiver of such terms, limitations or exclusions. Furthermore, such assistance does not extend this Limited Warranty.
- Continuum Footspas shall not be liable for any other obligations or liabilities as a result of breach of contract of warranty, negligence or strict liability with regards to The Maestro Pedicure Spa.
- This Limited Warranty applies only to Maestro Pedicure Spas installed in any one of the fifty (50) States of the United States, the District of Columbia or provinces of Canada.

# Pedicure Chairs from Continuum® Footspas

## Introduction

The entire team at Continuum® Footspas sincerely thanks you for choosing one of our pedicure chairs. We fully realize you had a choice and we look forward to making absolutely sure you made the right choice. A tremendous amount of time and energy has gone into designing and manufacturing not only a beautiful looking pedicure chair, but a pedicure chair that will perform trouble free for many years.

**Please take a moment to read this entire Owners Manual before installation and use.**

## **SAVE THESE INSTRUCTIONS**

If you have any questions, concerns or problems, please feel free to call us at 1 877 255 3030.

## **Very Important Safety Instructions**

- ✎ Maximum weight capacity of your pedicure chair is 300 pounds.
- ✎ Never bring or operate any electrical device in or near your pedicure chair.
- ✎ Always enter and exit your pedicure chair very slowly and carefully.
- ✎ Never stand in the basin.
- ✎ Avoid excessive water temperatures. This can be dangerous and water temperature must be checked before each use.
- ✎ Maximum operational water temperature should **never** exceed 105° F (41° C)
- ✎ Maximum **supply** water temperature should **never** exceed 150° F (65° C)  
Always check state or local codes to verify maximum supply temperatures.

# Pedicure Chairs from Continuum® Footspas

## Very Important Requirements

Every Continuum pedicure chair must be installed by a licensed plumber and licensed electrician. Installation must comply with all national, state and local building codes and/or regulations. Your pedicure chair will not operate properly unless it has sufficient water pressure and temperature, proper drainage and adequate electrical power.

**ANY INSPECTIONS OR APPROVALS ARE THE SOLE RESPONSIBILITY OF THE PURCHASER. PRIOR TO INSTALLATION, ONE SHOULD CONTACT THEIR LOCAL BUILDING INSPECTOR TO MAKE SURE ALL LOCAL CODES ARE COMPLIED WITH.**

**SAVE THESE INSTRUCTIONS**

## **WARNING!!! Possible Health Risks**

**If your client experiences any pain or discomfort while using any Continuum pedicure chair, discontinue use immediately.**

Clients whose feet or legs are inflamed for any reason or clients who have open wounds should **never** be allowed to use a pedicure chair. If there is any sign of fungal infection, fracture, swelling or persistent pain, clients should consult their physician before using a pedicure chair. Diabetics should always consult their physician prior to receiving a pedicure.

# Pedicure Chairs from Continuum® Footspas

## Important Utility and Installation Requirements and Instructions

**SAVE THESE INSTRUCTIONS**

### Electrical Service

A separate, 120V, 60HZ, 20 amp GFCI protected grounded circuit **MUST** be used to supply power to each pedicure chair. Failure to do so renders the Limited Warranty null and void.

**NOTE: IF INSTALLED IN CANADA THIS UNIT MUST BE IN ACCORDANCE WITH  
THE CANADIAN ELECTRICAL CODE, PART 1.**

### Grounding and GFCI Requirements

**WARNING** - When using electrical products, basic precautions should always be followed, including the following:

- 1. DANGER: RISK OF ELECTRIC SHOCK.** Connect **ONLY** to a circuit protected by a ground-fault circuit-interrupter (GFCI).
- 2. GROUNDING IS REQUIRED.** Every Continuum pedicure chair **MUST** be installed by a qualified service representative and **MUST** be properly grounded. Also, the designated outlet **MUST** be grounded.

**DO NOT IN ANY WAY MODIFY THE PLUG PROVIDED ON YOUR PEDICURE CHAIR.  
NO ADAPTER SHOULD BE USED WITH ANY CONTINUUM PEDICURE CHAIR.**

### WARNING:

**TO REDUCE THE RISK OF BURNS, ELECTRIC SHOCK, FIRE OR INJURY TO PERSONS:**

- ✂ Any servicing of your pedicure chair must be performed by authorized service personnel only.
- ✂ DO NOT operate your pedicure chair if it has a damaged cord or plug.
- ✂ Keep cord away from heated surfaces.
- ✂ DO NOT use outdoors.

### Hot/Cold Water Supply and Drain

- ✂ All plumbing connections must conform to all national, state and local codes.
- ✂ Shut-off valves are strongly recommended per plumbing codes.
- ✂ Maximum water temperature must not exceed 105° F (41° C)
- ✂ Maximum SUPPLY water temperature must not exceed 150° F (65° C)
- ✂ Hot/Cold water supply and drain connections are located in the back of pedicure chair.
- ✂ When utilizing optional factory installed drain pump, in-line backflow prevention is provided.
- ✂ If pedicure chair is plumbed utilizing drain pump and drain hose; the drain hose connecting the pedicure chair to the wall connection (drain) must be 3/4" ID.
- ✂ Size of supplied plumbing fittings:

Hot/Cold water supply: 1/2" NPT (male)

Drain Pump: 3/4" NPT (male)

# Pedicure Chairs from Continuum® Footspas

## Instructions Pertaining to a Risk of Fire, Electric Shock or Injury to Persons

### Important Safety Instructions

**WARNING** - When using Continuum pedicure chairs, basic precautions **MUST** be followed, including the following:

- 1. READ AND FOLLOW ALL INSTRUCTIONS.**
- 2. WARNING: RISK OF ACCIDENTAL INJURY OR DROWNING.** CHILDREN SHOULD NOT USE PEDICURE CHAIRS WITHOUT ADULT SUPERVISION.
3. Use your pedicure chair only for its intended use as described in this manual. Do not use attachments not recommended by the manufacturer.
- 4. WARNING: RISK OF ELECTRIC SHOCK.** DO NOT PERMIT ELECTRIC APPLIANCES (SUCH AS A HAIR DRYER, LAMP, TELEPHONE, RADIO, OR TELEVISION) WITHIN 5 FEET (1.5 M) OF YOUR PEDICURE CHAIR.
5. Do not operate your pedicure chair without the jet cover attached to the NoPipe™ Jet.
6. Any Continuum pedicure chair must be connected only to a supply circuit that is protected by a ground fault circuit-interrupter (GFCI). Such a GFCI should be provided by the installer and should be tested on a routine basis. To test the GFCI, push the test button. The GFCI should interrupt power. Push the reset button. Power should be restored. If the GFCI fails to operate in this manner, the GFCI is defective. If the GFCI interrupts power to the pedicure chair without the test button being pushed, a ground current is flowing, indicating the possibility of an electric shock. Do not use your pedicure chair. Disconnect the pedicure chair and have the problem corrected by a qualified service representative before using.
- 7. GROUNDING IS REQUIRED.** Your pedicure chair **MUST** be installed by a qualified service representative and **MUST** be properly grounded. **ALSO, THE DESIGNATED OUTLET MUST BE GROUNDED. DO NOT IN ANY WAY MODIFY THE PLUG PROVIDED ON YOUR PEDICURE CHAIR. NO ADAPTER SHOULD BE USED WITH YOUR PEDICURE CHAIR.**
- 8. SAVE THESE INSTRUCTIONS.**

### **WARNING**

Any service that may be required **MUST** be performed by a qualified service representative.

# Pedicure Chairs from Continuum® Footspas

## Unpacking

Continuum pedicure chairs require very little assembly.  
Remove and discard all packing and lifting materials.

## Installation Instructions

EVERY CONTINUUM PEDICURE CHAIR MUST BE INSTALLED BY A LICENSED PLUMBER AND A LICENSED ELECTRICIAN. INSTALLATION MUST COMPLY WITH ALL NATIONAL, STATE AND LOCAL BUILDING CODES AND/OR REGULATIONS. FAILURE TO COMPLY WITH THESE CODES AND/OR REGULATIONS WILL RESULT IN THE LIMITED WARRANTY BEING NULL AND VOID.

### Install to Permit Access for Servicing

In order to ensure access after installation, please refer to installation drawings available at [ContinuumFootspas.com](http://ContinuumFootspas.com).

### Extremely Important

Each pedicure chair **MUST** be anchored to the floor. This is especially critical if pedicure chair is gravity drained with or without air gap. There are two (2) black mounting brackets supplied with each pedicure chair for this purpose. **Your warranty may be null and void if pedicure chair is not properly secured to floor.**

#### Installation Instructions:

##### Step 1

Utilizing a level, carefully adjust the four (4) leveling feet. It is extremely important that your pedicure chair is level. (Note: All leveling feet have been factory adjusted prior to shipment. In most cases no further adjustment should be necessary). The entire pedicure chair may be raised or lowered slightly to ensure the technician's chair touches the front stainless steel guard and not the wood or Formica®.

##### Step 2

Mounting brackets are to be used on only two (2) of the four (4) main frame leveling feet. Slotted portion of the mounting bracket fits between frame and the leveling foot (one in front, one in back, opposite of each other). The flat portion with holes should be positioned to the floor. Use appropriate hardware to secure to the floor (not supplied).

### Location and Support

The floor structure must be level and capable of supporting the occupied pedicure chair. **Please note your pedicure chair must be installed at least eleven (11) inches away from a back wall to ensure proper clearance for reclining seat back.** Refer to installation drawings at [www.ContinuumFootspas.com](http://www.ContinuumFootspas.com).

# Pedicure Chairs from Continuum® Footspas

## User Maintenance Instructions Cleaning and Disinfecting

### IMPORTANT

#### **YOU ARE REQUIRED TO CHECK WITH YOUR STATE BOARD FOR MANDATORY CLEANING AND DISINFECTING REQUIREMENTS AND PROCEDURES.**

The following procedures are important guidelines that will help in keeping your pedicure chair clean and trouble free for years. It is extremely important to clean and disinfect each and every pedicure chair after each pedicure, after the last pedicure of the day and once a week for overnight cleaning.

#### **A SPECIAL NOTE PERTAINING TO BLEACH**

While bleach seems to be used extensively for cleaning and disinfecting of pedicure chair basins, it is NOT recommended nor is it effective. Moreover, excessive use of bleach may greatly reduce the longevity of your pedicure chair internal components (i.e. pumps, jet, waste assembly, etc.). Excessive and repeated use of bleach may also void your warranty. **CONTINUUM FOOTSPAS STRONGLY RECOMMENDS NOT USING BLEACH TO CLEAN YOUR PEDICURE BASIN.** As always, you are required to check with your state board for mandatory cleaning and disinfecting requirements and procedures.

#### **Cleaning and Disinfecting Products**

Your state board requires disinfecting of your pedicure tub. Continuum STRONGLY recommends “**Splish Splash One-Step Disinfectant.**” The following page outlines product benefits for all pedicure chairs together with contact information.

While other EPA registered products are available for maintaining pedicure tubs, we have found [Splish Splash](#) to be the most effective, multi-purpose and economical product on the market. Moreover, unlike other products, **IT DOES NOT DAMAGE** the beautiful wood finish of your pedicure chair.

A great deal of effort has gone into assuring the wood finish on your pedicure chair is chemical and water resistant. Use of other brands of cleaning and disinfecting solutions may damage the wood finish and void the Limited Warranty.

#### **After Each Client Procedures**

- 1. Drain** all water from the basin.
- 2. Scrub all visible residue** from the inside walls of the basin with a brush or liquid soap and water. Use a clean and disinfected brush with a handle. Brushes must be cleaned and disinfected after each use.
- 3. Rinse** the basin with clean water.
- 4. Refill the basin** with clean water and circulate the correct amount (read the label for mixing instructions) of the EPA Registered Liquid Disinfectant through the basin for 10 minutes.
- 5. Drain, rinse and wipe** dry with a clean **paper** towel.





# One-Step Disinfectant

EPA APPROVED AND LICENSED IN ALL 50 STATES!

Introducing:  
**Splish Splash One-Step Disinfectant**  
 Clean and Disinfect your Salon with just One Product!

## PEDICURE SPA

For Pedicure Spas and Tubs, add one (1) Fluid Ounce of Splish Splash One-Step Disinfectant for each one (1) gallon of water. Allow water to circulate for 10 minutes. Drain and rinse with clean water.

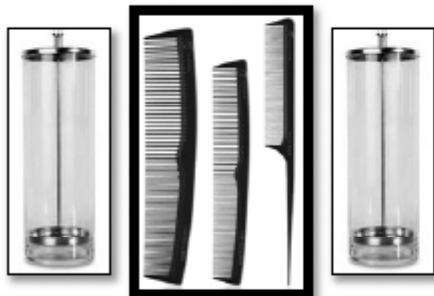


## TOOL DISINFECTION

For tool disinfection, mix one (1) Fluid Ounce of Splish Splash One-Step Disinfectant with one (1) gallon of water. Allow tools to soak for ten (10) minutes. Remove tools from solution. Rinse with clean water and dry.

## HARD SURFACES

For hard non-porous surfaces throughout salon, including manicure stations and countertops, mix one (1) Fluid Ounce of Splish Splash One-Step Disinfectant in one (1) gallon of water. For spray bottle, mix 1/4 Fluid Ounce of One Step Disinfectant in 32 Ounces of water. Sponge or spray on, wait ten (10) minutes and wipe dry.



## PLASTIC INSTRUMENTS

For plastic instruments, mix one (1) Fluid Ounce of Splish Splash One-Step Disinfectant with one (1) gallon of water and fill your sterilization jars. Plastic instruments may remain immersed until ready for use.

Additional Uses: To disinfect and sanitize tanning beds and towels.

**One-Step Disinfectant by Splish Splash...**  
**The Economical Way To Meet All Your Salon's Disinfectant Needs.**

Please read Splish Splash One-Step Disinfectant label for complete usage instructions.  
[www.splishsplashcleaners.com](http://www.splishsplashcleaners.com) - (847) 438-0800

# Pedicure Chairs from Continuum® Footspas

## End of Each Day Cleaning Procedures

1. **Remove** the cover and impeller from the NoPipe™ Jet. No tools are required. Simply grip the cover and gently twist off. To replace, position cover on front of jet, twist gently to lock. Turn “left-handed” screw to remove impeller.
2. **Clean** the screen and the area behind it with a brush, liquid soap and water to remove all visible residue and replace properly cleaned screens and impellers.
3. **Fill** the basin with warm water and chelating detergent and circulate the chelating detergent through the spa system for 5-10 minutes (follow manufacturer’s instructions).
4. **Drain** the soapy solution and rinse the basin.
5. **Refill the basin** with clean water **and circulate** the correct amount (read the label for mixing instructions) of the EPA Registered Liquid Disinfectant (Splish Splash is strongly recommended) through the basin for 10 minutes.
6. **Drain, rinse** and wipe dry with a clean **paper** towel.
7. Allow the basin to dry completely.

## At least once each week overnight procedures:

After completing the End of Each Day procedures:

1. Do not drain the liquid disinfectant solution - Turn off the unit and leave the disinfecting solution in your pedicure chair at least 6 to 10 hours.
2. In the morning drain and rinse.
3. Refill the basin with clean water and flush the system.

**YOUR ARE REQUIRED TO CHECK WITH YOUR STATE BOARD FOR  
MANDATORY CLEANING AND DISINFECTING REQUIREMENTS AND PROCEDURES.**

# Pedicure Chairs from Continuum® Footspas

## After Client Pedicure Cleaning Log

Date (m/d/yr): \_\_\_\_\_ Station # \_\_\_\_\_ Serial # \_\_\_\_\_

Service No.	Client	Time	Staff
1			
2			
3			
4			
5			
6			
7			
8			
9			
10			

Date (m/d/yr): \_\_\_\_\_

Service No.	Client	Time	Staff
1			
2			
3			
4			
5			
6			
7			
8			
9			
10			

Date (m/d/yr): \_\_\_\_\_

Service No.	Client	Time	Staff
1			
2			
3			
4			
5			
6			
7			
8			
9			
10			

# Pedicure Chairs from Continuum® Footspas

**SAVE THESE INSTRUCTIONS**

## OPERATING INSTRUCTIONS

**NOTE:** Please read these instructions carefully before operating your pedicure chair.

**CAUTION:** To avoid injury and irreparable damage, always remain seated when using your pedicure chair. **NEVER STAND ON OR IN THE BASIN.**

### SPECIAL WARNINGS

- ✍ If you have any concerns regarding your health, consult your doctor before using your pedicure chair.
- ✍ Never use any pedicure chair on open wounds, or any area of the body that is swollen, burned, inflamed or where skin eruptions or sores are present.
- ✍ Consult your doctor before using a pedicure chair if you have diabetes, as diabetes can contribute to foot problems including decreased feeling or circulation to the feet.
- ✍ Use of this product should be pleasant and comfortable. Should pain or discomfort result, discontinue use and consult your physician.

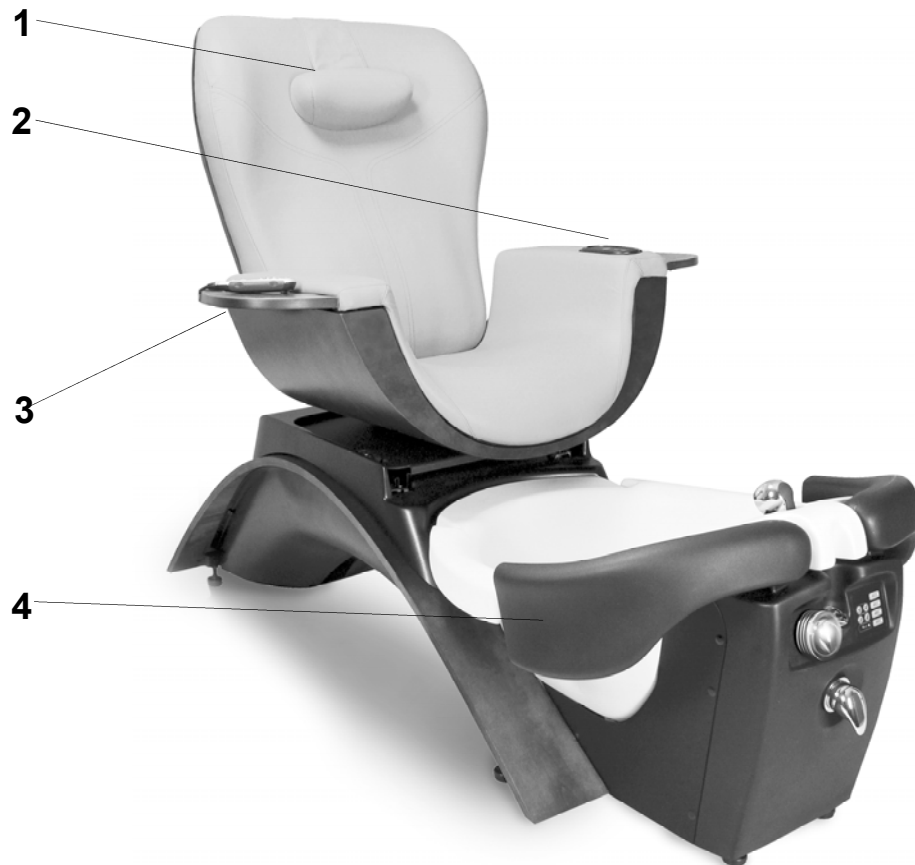
**WARNING: WHEN USING CONTINUUM PEDICURE CHAIRS, BASIC PRECAUTIONS SHOULD ALWAYS BE FOLLOWED, INCLUDING THE FOLLOWING:**

1. **READ AND FOLLOW ALL INSTRUCTIONS.**
2. **DANGER:** To reduce the risk of injury, do not permit children to use pedicure chairs unless they are closely supervised at all times.
3. Use your pedicure chair only for its intended use as described in this manual. Do not use attachments not recommended by manufacturer. Do not tamper with your pedicure chair.

**After your pedicure chair is installed and the plumbing and electrical connections are made, clean and disinfect the basin before initial use. You are required to check with your state board for mandatory cleaning and disinfecting requirements and procedures.**

# MAESTRO<sup>®</sup> PEDICURE SPA

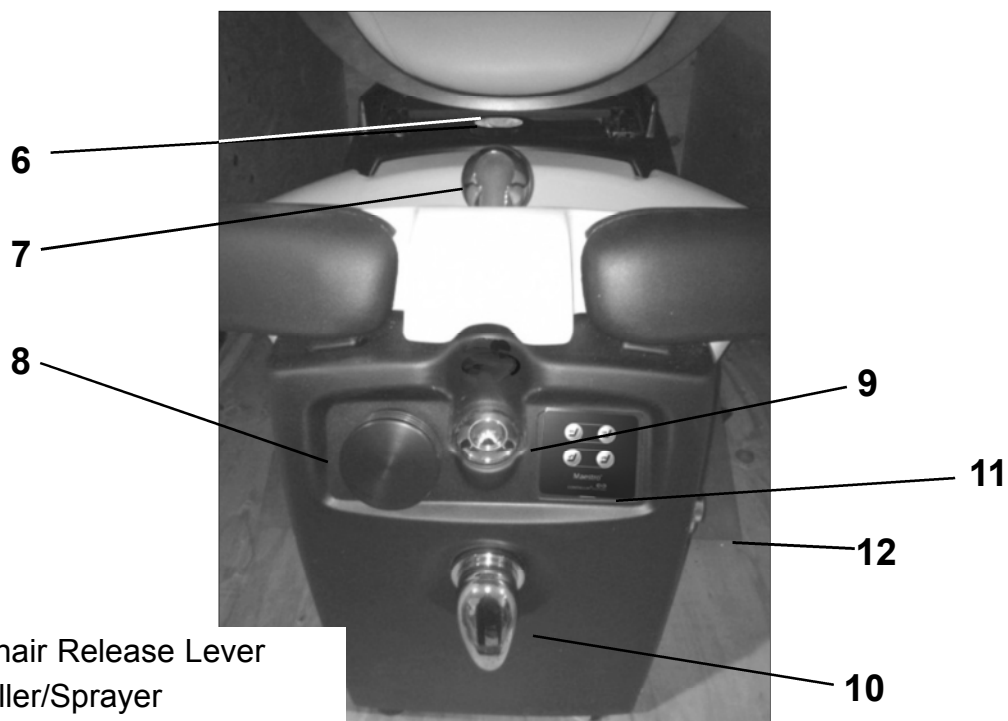
## Features of the Maestro Pedicure Spa



**Figure 1**

- 1 - Adjustable headrest
- 2 - Client chair control keypad
- 3 - Beverage holder
- 4 - Pivoting leg supports

# MAESTRO® PEDICURE SPA



- 6 - Chair Release Lever
- 7 - Filler/Sprayer
- 8 - Drain Handle
- 9 - I-Fill™ Button (start/stop water and jets)
- 10 - Hot/Cold and Flow Control Handle
- 11 - Technicians Chair Control Keypad
- 12 - Drain Pump ON/OFF (only if optional drain pump is ordered)

**Figure 2**



- 13 - NoPipe™ Jets
- 14 - Drain pop-up
- 15 - Removable foot massage rollers

**Figure 3**

# MAESTRO® PEDICURE SPA

## Chair Control



**Client Chair  
Control Keypad (2)**



**Technician's Chair  
Control Keypad (11)**

The Maestro utilizes two Chair Control Keypads, one located on the arm (2) for the client; the other located on the front panel (11) for the technician. Both keypads control forward/backward and tilting of the chair. The chair will automatically stop when fully tilted, full forward/backward or when a movement button is released.

**ENTERING AND EXITING THE CHAIR** - Make sure each client moves slowly and carefully. ONLY enter and exit chair when it is in a locked position.

**TO SWIVEL CHAIR** - The Chair Release Lever (6) is centered directly below the curved portion of the chair. Gently lift up on the lever allowing the chair to swivel. This must be done each and every time a client enters or exits the chair. **Please note:** In order for the chair locking mechanism to work properly, one must sit normally in the chair, that is to say, NOT on the outer edge of the chair, but rather sitting back in the chair. This allows for the locking pin to engage and disengage easily.

**When entering:** Lift lever allowing chair to swivel either left or right. With client seated, swivel chair to front position until a click is heard. This safely locks the chair in place.

**When exiting:** Lift lever allowing chair to swivel either left or right until a click is heard. This safely locks the chair allowing exit.

**IMPORTANT! Never spray water directly on the Technician Chair Control Keypad. This will damage the keypad and void the Limited Warranty.**

# Pedicure Chairs from Continuum® Footspas

## Operating Instructions for i-Fill™ System (Auto Fill)

(Auto Fill is a Factory Installed Option)

**Step #1) LIFT AND TURN** chrome handle for Hot/Cold water valve (6) located in front of spa. Make sure drain Pop-Up (13) is in the up position allowing water to drain from basin.

**Step #2)** Press “i-Fill-Auto” button to begin water flow. If spa has optional drain pump, one must also start the drain pump by pressing “Pump” button (4). When water reaches desired temperature; turn Drain Handle (5) to lower Pop-Up (13). Water flow will automatically stop and jet will start running when water level reaches preset level (Jet has a built-in one (1) hour timer). Jet may be shut off manually by pressing Jet Icon located on i-Fill button. Press button a second time to restart jet (See picture below). To add additional water; press Faucet Icon located on i-Fill button (See picture below). Press button a second time to stop water flow. There is an audible tone as additional water is being added to basin.

### VERY IMPORTANT (Applies ONLY to i-Fill Equipped Spas)

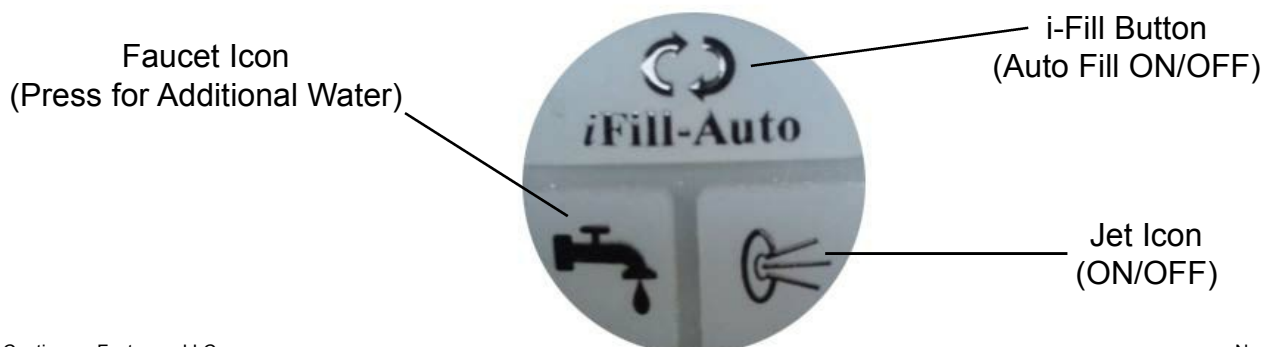
In order to prevent hot and cold water from mixing inside an *open* water valve; once water stops flowing close valve handle (6) by gently pushing it to the down position. Furthermore, Neoperl check valves have been installed on the brass hot and cold water inlets located in the back of the spa. This will prevent any cross connection of hot and cold water.

### Adjusting Sensor Delay Time Setting

As a result of water pressure and/or basin size, it may be necessary to change the amount of time water flows **after** reaching the sensors located on the jet body. If this is the case, please note the following:

A green colored control box is located underneath the left curved plastic shroud (When facing spa). Removing this curved shroud is quite easy. (Note: Because of space constraints, the control box is mounted upside down.)

On the side of the control box is a blue LED light. Next to it is a blue circle control. Utilizing a small screwdriver, GENTLY turn the arrow inside the circle to read from 5 seconds to 55 seconds. By turning the arrow and changing the time delay; more or less water will fill the basin. For safety purposes, there is a four (4) minute water flow timer built into the control box.





# MAESTRO® PEDICURE SPA

## Dual Stream NoPipe™ Jets

The NoPipe Jet has a special screw (left handed) that secures the impeller to the motor shaft. The impeller is located behind the removable screen. Simply unscrew and remove the impeller for cleaning and disinfection. (No tools are required; it is hand tightened) Re-attach impeller utilizing the special screw and **hand tighten only**.

**WARNING: DO NOT ATTEMPT TO OPERATE JET WITHOUT WATER!**

### TO USE SPRAYER

The Maestro utilizes a combination sprayer/filler. By simply depressing the black rubber insert or moving the toggle button located on the round portion of the chrome sprayer head, one can switch between the two functions. If rinsing the basin is desired, simply press the I-Fill button (9) while making sure the drain pop-up (14) is in the up position. (If you have a drain pump, you must turn the pump on as well)

### PLEASE NOTE:

Pedicure chairs assembled and shipped during Wisconsin winter months are tested using a pink RV anti-freeze solution. It is perfectly normal for a small amount of this pink fluid to remain within the plumbing system. To eliminate any traces of RV anti-freeze, simply fill and operate your pedicure chair several times before actual use.

### TO DRAIN

#### **With optional factory installed drain pump:**

**Step 1)** Slowly turn Chrome Drain Handle (8) located on the the front of your pedicure chair. This raises the pop-up (14) located on the bottom of the basin allowing water to drain.

**Step 2)** Press chrome button marked "Drain" (12) located on the right side of the basin shroud. This will activate the drain pump. When basin is fully emptied, depress button once again to turn pump off. **VERY IMPORTANT! When draining basin, ALWAYS perform Step 1 before Step 2. NEVER reverse the steps as this may cause the pop-up to become jammed in the waste assembly.**

**Note:** Drain pump will automatically turn off in three (3) minutes if button is not pressed a second time.

### GRAVITY DRAIN

**Step 1)** Slowly turn Chrome Drain Handle (8) allowing water to drain from basin.

## Cleaning and Disinfecting after Draining

**YOU ARE REQUIRED TO CHECK WITH YOUR STATE BOARD FOR MANDATORY CLEANING AND DISINFECTING REQUIREMENTS AND PROCEDURES.**

**WARNING:** It is extremely important to follow the cleaning instructions provided by your State Board. Failure to clean your pedicure chair adequately can result in serious health issues for your clients as well as the nail technician. Failing to clean your pedicure chair may also cause it to work improperly. Regular cleaning will keep your pedicure chair in good working condition.

# MAESTRO® PEDICURE SPA

## **LEG SUPPORTS (4)**

The Maestro's dual and independent leg supports pivot upward to support the entire leg, not just the foot. Feet are perfectly positioned for massage and pedicure treatments.

To utilize one or both leg supports, simply pivot it upward until it stops. To ensure a smooth upward motion, place hand on the side of the leg support near the center. Gently push up until leg support reaches a vertical position. Gently lift up on the front edge of the leg support and it will lock into place. To unlock, gently lift the leg support straight up and carefully bring it down into the horizontal position.

**WARNINGS: DO NOT DROP THE LEG SUPPORT INTO THE STORING POSITION. GENTLY GUIDE IT INTO PLACE. WHEN THE LEG SUPPORT IS IN THE VERTICAL POSITION DO NOT SIT ON LEG SUPPORT.**

**NEVER LIFT THE MAESTRO FROM THE LEG SUPPORTS.**

## **Handheld Rolling/Kneading Back Massage Control Wand**



**Step #1)** Note red light located above ON/OFF button. Massage system will NOT operate if light is blinking. Press red ON/OFF button once to obtain a steady light.

**Step #2)** Press one (1) of three (3) buttons to activate the area of back massage desired: Upper, Lower or Full.

**Step #3)** Massage will automatically shut-off after twenty-five (25) minutes of continuous operation. If one desires to shut massage off before the twenty-five (25) minute cycle, simply press ON/OFF button. All lights will begin to blink as the massage rollers return to their "home" position located underneath the headrest pillow

# MAESTRO® PEDICURE SPA

## Care and Maintenance of Wood, Basin and Upholstery

### Wood Surfaces

Maintaining the beautiful wood finish of your Maestro Pedicure Spa is easy. Simply clean and polish with any good quality liquid or paste wax polish on a regular basis. While the wood finish is extremely durable and water resistant, it is advisable to wipe dry any water that may splash onto the wood. By doing so, one minimizes the occurrence of dried water spots as well.

If by chance the wood becomes scratched, simply use any light to medium cherry touch up stain. These touch up “pens” are readily available at most hardware stores.

### Basin

The Maestro’s solid surface basin is extremely durable and stain resistant. In addition to cleaning and disinfecting procedures as outlined by your state board, one may choose to scrub the basin as well. Simply use a fine nylon scouring pad (ie; Scotch Bright™ #6448 or #7448) together with a good cleaning powder (ie; Bar Keeper’s Friend™). This additional cleaning will keep the basin of your Maestro Pedicure Spa looking brand new for many years. **NOTE: DO NOT USE THE NYLON SCOURING PAD ON THE ADJACENT LEG SUPPORTS.**

### Upholstery

Simply use a mild detergent with warm water and gently clean any dirt or grime that may appear on the seat, seat back or arms. The leather-like material is very durable and with reasonable care should look like new for many years to come.

### Leg Supports (4)

Again, a mild detergent and warm water is all that’s needed to clean the padded leg supports. However care should be taken to prevent nail polish or acetone from coming in contact with the leg supports. These products may damage or discolor the outer “skin” of the foam. **NOTE: DO NOT USE THE NYLON SCOURING PAD ON THE ADJACENT LEG SUPPORTS.**

# MAESTRO® PEDICURE SPA

## If You Don't Read Anything Else, Please Read This!

### Tips for Getting the Most from Your Maestro® Pedicure Chair

- ✍ Always use a hand towel to cover and protect the footrest/leg support area. It will certainly help to keep your Maestro looking brand new.
- ✍ While we strongly recommend using an abrasive cleanser and a Scotch Brite® light duty pad (#6448 or #7448) for cleaning the basin, DO NOT use this for cleaning the two adjacent leg supports. Doing so will damage the outer layer of the leg support. Use only a mild cleaner and soft cloth to clean the leg supports. Better yet, as suggested above, use a hand towel to cover and protect this area.
- ✍ Leg supports have been designed and engineered to lock in the up position. It may be necessary to gently push down on the leg support to make sure it locks securely. To unlock, lift up and carefully position to side of basin.
- ✍ Optional manicure trays are available (depending on date of manufacture) for The Maestro. When manicure trays are ordered with the pedicure chair, brackets will be factory installed. Simply attach the trays with provided wood screws making sure they fit tightly against the upholstered arms.

If ordering manicure trays AFTER after shipping, please call Continuum Footspas at:  
1-877-255-3030 for further assistance.

- ✍ **Gently twist off jet covers.** They will lock into place with a gentle turning motion. The brand name "Luraco" should ALWAYS be located on the top.
- ✍ In order for the chair locking mechanism to work properly, one must sit normally in the chair, that is to say, NOT on the outer edge of the chair, but rather sitting back in the chair. This allows for the locking pin to engage and disengage easily.

# MAESTRO<sup>®</sup> PEDICURE SPA

## NOTES:



Phone: **262 754 4900** Fax: **262 754 4901** Toll free: **877 255 3030**

[ContinuumFootspas.com](http://ContinuumFootspas.com)