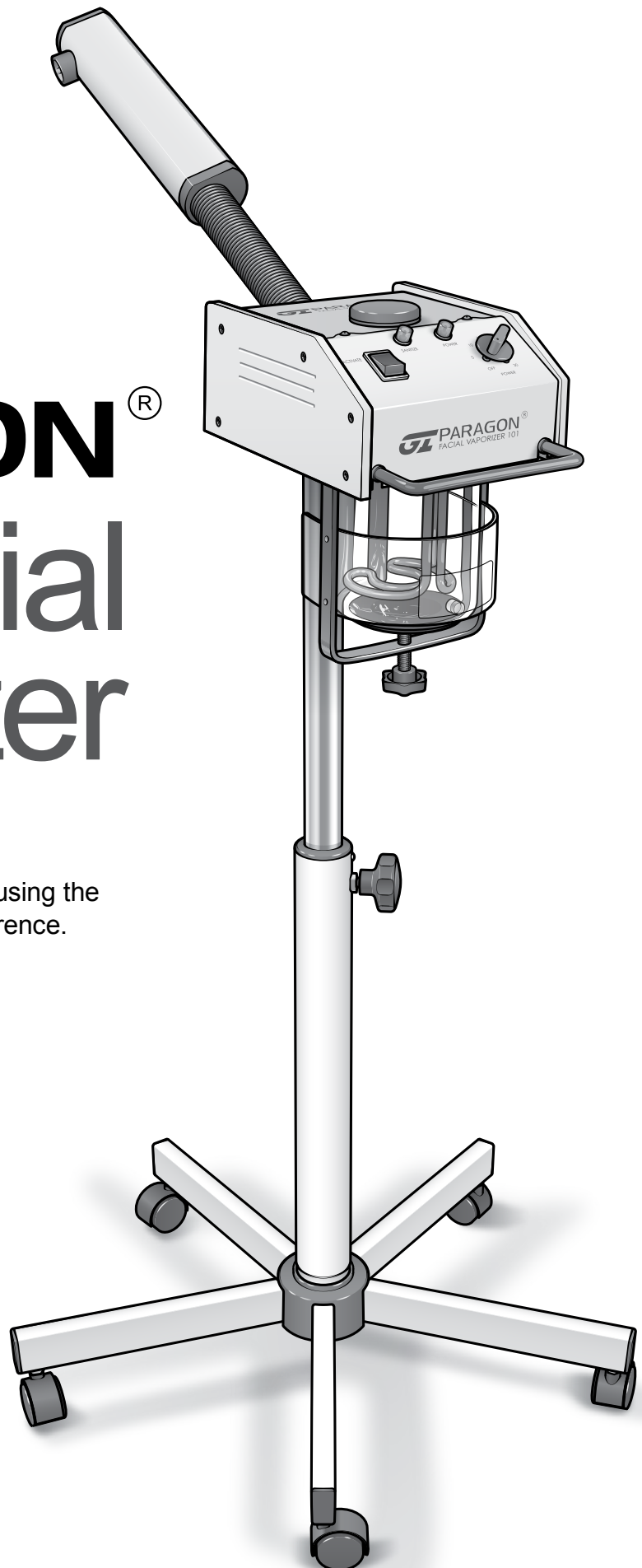


PARAGON[®] 101 Facial Vaporizer

Owner's Manual

Read this manual before assembling or using the product. Keep the manual for future reference.



Contents

Safety 1

Assembly 4

Use 5

Maintenance 7

Troubleshooting 8

Warranty 11

Safety

Operators of this unit must read, understand, and follow all the safety and operating instructions before using the unit. Ensure that the employees receive proper training before allowing them to operate the unit. Retain this manual for future reference.

WARNING!

General

- Touching the glass jar when it is hot may cause severe burns. Do not attempt to remove or insert the glass jar when it is hot, during use, or immediately after use.
- Hot water spouting may cause severe burns. To prevent water from spouting, always maintain the distilled water level at the proper level between the top and bottom red lines. Before turning on the steamer, fill the water jar to the top red line. Do not overfill above top red line.
- Breaking or shattering glass may cause serious injury. Always wait for water and jar to cool before adding more water.
- To extend the life cycle of the heating element and to prevent the glass jar from cracking, do not add cold water while water is hot.
- Quick stops, excessive force, and uneven surfaces may cause the appliance and cart combination to overturn and cause serious injury to a person and damage the unit. Do not place this unit on an unstable stand, tripod, bracket, or mount. Use only with a stand, tripod, bracket, or mount recommended by the manufacturer or sold with the product. Any mounting of the unit should follow the manufacturer's instructions and should use a mounting accessory recommended by the manufacturer. An appliance and cart combination should be moved with care.

Fire and Electric Shock

The following warnings may result in fire or electric shock and cause serious injury.

- This unit should be operated only from the type of power source indicated on the marking label. If you are not sure of the type of power supply you plan to use, consult your appliance dealer or local power company. For units intended to operate from battery power or other sources, refer to the operating instructions.
- This unit may be equipped with a polarized alternating-current line plug (a plug having one blade wider than the other). This plug will fit into the power outlet only one way. This is a safety feature. If you are unable to insert the plug fully into the outlet, try reversing the plug. If the plug should still fail to fit, contact your electrician to replace your obsolete outlet. Do not defeat the safety purpose of the polarized plug. Alternately, this unit may be equipped with a 3-wire grounding-type plug, a plug having a third (grounding) pin. This plug will only fit into a grounding-type power outlet. This is a safety feature. If you are unable to insert the plug into the outlet, contact your electrician to replace your obsolete outlet. Do not defeat the safety purpose of the grounding-type plug.
- Power supply cords should be routed so that they are not likely to be walked on or pinched by items placed upon or against them, paying particular attention to cords and plugs, convenience overhead power lines or other electric light or power circuits or where it can fall into such power lines or circuits.
- Never push objects of any kind into this unit through openings, as they may touch dangerous voltage points or short out parts that could result in a fire or electric shock. Never spill liquid of any kind on the unit.
- Do not overload outlets and extension cords as this can result in a risk of fire or electric shock.
- Always unplug the unit from the outlet before cleaning.
- Do not attempt to service this unit yourself as opening or removing covers may expose you to dangerous voltage or other hazards. If service is required, unplug the unit from the outlet and refer servicing to qualified service personnel. Conditions requiring service may include:
 - When the power supply cord or plug is damaged.
 - If liquid has been spilled or objects have fallen into the unit.
 - If the unit has been exposed to rain or water.
 - If the unit does not operate normally by following the operating instructions. Adjust only those controls that are covered by the operating instructions, as an improper adjustment of other controls may result in damage and will often require extensive work by a qualified technician to restore the unit to its normal operation.
 - If the unit has been dropped or the cabinet has been damaged.
 - When the unit exhibits a distinct change in performance--this indicates a need for service.
- When replacement parts are required, be sure the service technician has used replacement parts specified by the manufacturer or have the same characteristics as the original part. Unauthorized substitutions may result in fire, electric shock, or other hazards.

NOTICE

- Do not run chemicals through the appliance such as cleaning agents or aroma additives. These clog the water ways and leave deposits. Do not use liquid cleaners or aerosol cleaners. Use a damp cloth for cleaning.
- To avoid steamer burnout do not test run the appliance dry.
- Do not use attachments not recommended by the product manufacturer as they may cause hazards.
- Require users to inspect equipment and test critical safety features before each day of use. If equipment is in need of repair, please send the unit in for inspection and repair. Prior to sending the unit in, please call in for a RA (Return Authorization) number. Upon completion of any service or repairs to this unit, ask the service technician to perform safety checks to determine that the unit is safe to operate.
- Openings are provided for ventilation, to ensure reliable operation of the unit, and to protect it from overheating. These openings must not be blocked or covered. This unit should not be placed in a built-in installation unless proper ventilation is provided or the manufacturer's instructions have been adhered to.
- For added protection of this unit during a lightning storm, or when it is left unattended and unused for long periods of time, unplug it from the wall outlet and disconnect the cable system. This will prevent damage to the unit due to lightning and power line surges.

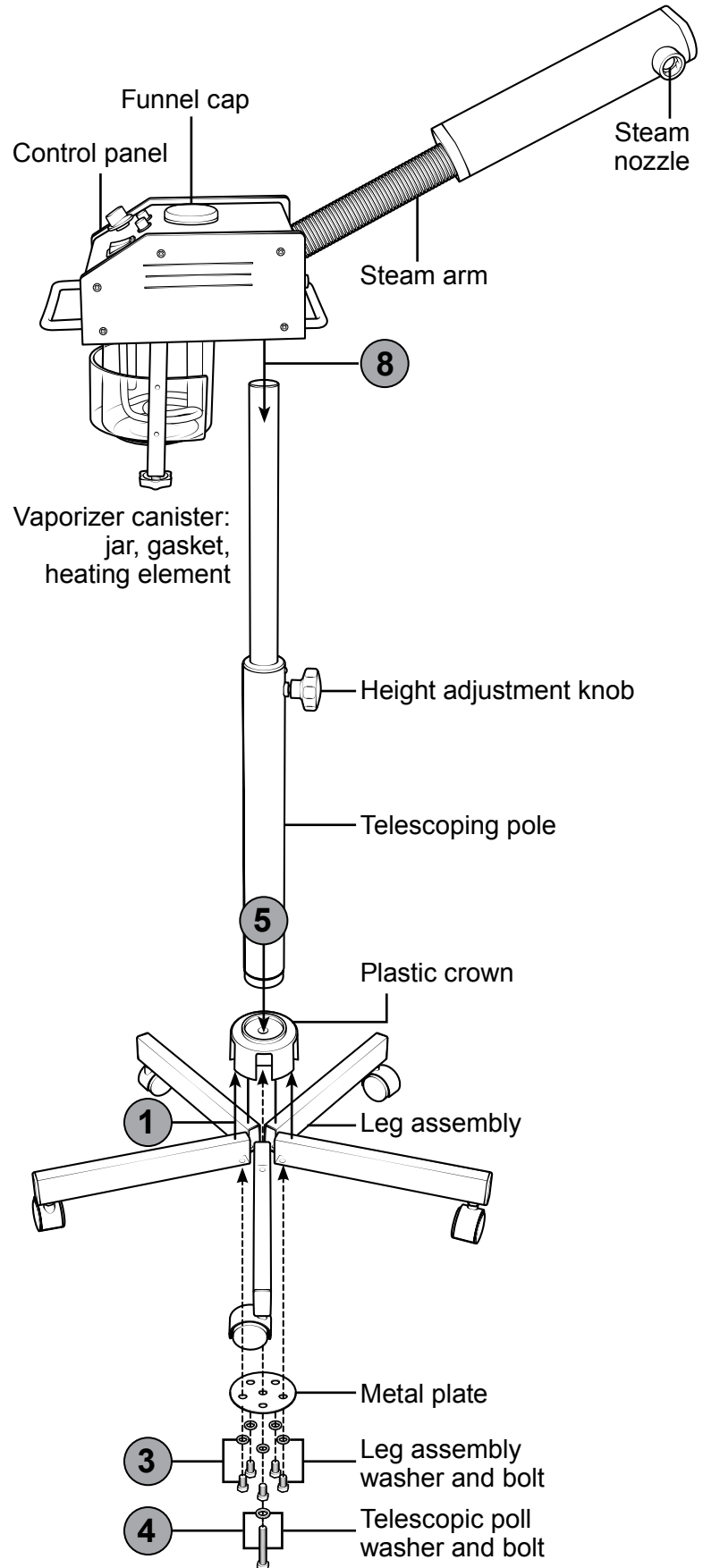
Assembly

Unpacking

- Unpack carefully. There are glass parts.
- Be sure to remove all foam packing filler before applying power to the unit.

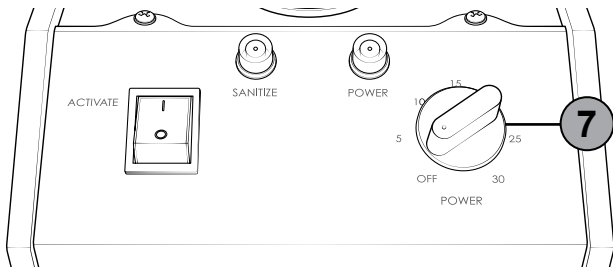
CAUTION: The Pole has a strong spring tension. Do not loosen the height adjustment knob until the vaporizer unit has been placed over the telescopic pole.

1. Insert each of the five sections of the leg assembly into the plastic crown.
2. Align the bolt holes located underneath the leg assembly with the bolt holes located in the metal plate.
3. Insert the five leg assembly bolts and matching washers through the metal plate into the base of the leg assembly and securely tighten.
4. Remove the pre-assembled bolt and washer from the base of the telescopic pole.
5. Center the telescopic pole on top of the plastic crown and the completed leg assembly.
6. Insert the telescopic pole bolt through the washer, completed leg assembly and into the telescopic pole.
7. Check to ensure the unit is stable and all of the hardware is securely tightened.
8. Place the Facial vaporizer unit over the telescopic pole.



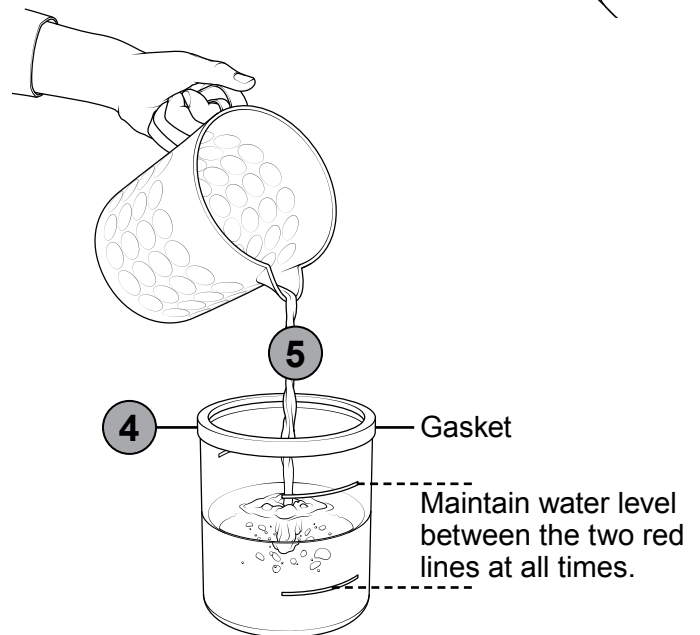
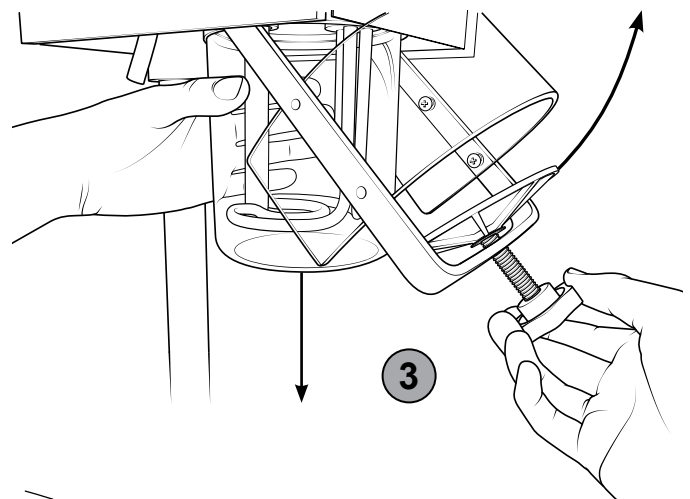
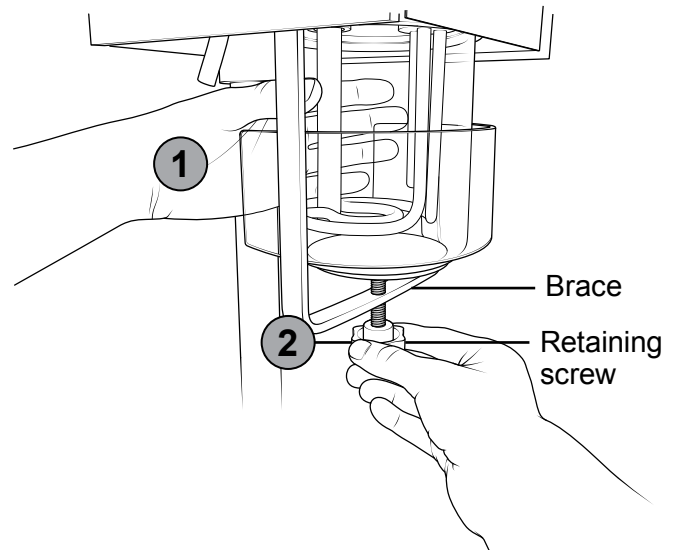
Use

1. Hold the jar firmly with one hand.
2. Use the other hand to turn the retaining screw knob.
3. Swing the brace away and carefully remove the glass jar.
4. Check for the gasket resting atop the glass jar. Its function is to help seal the water jar and to prevent water from leaking.
5. Pour distilled water into the glass jar. To prevent water from spouting do not exceed the top red line. The machine will beep when the water level becomes too low. **IMPORTANT!** Do not use essential oils in the water jar.
6. Reinsert the Glass jar over the heating unit and tighten the retaining screw knob.
7. Turn the timer knob to the desired time.

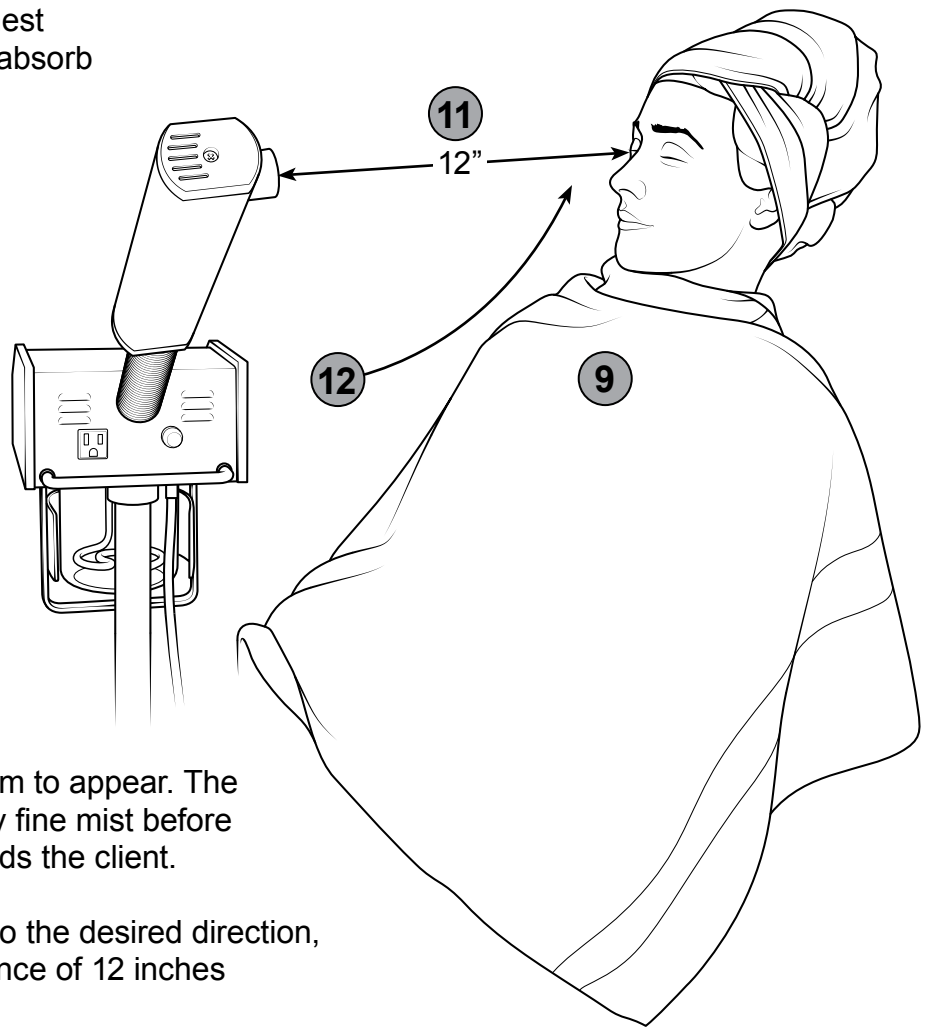


8. Turn the ozone switch on as needed.

About Ozone: Ozone is a form of oxygen sometimes used as a form of disinfectant. The ozone function in the facial steamer is an option. Check with applicable regulatory agencies such as the Department of Health and the Cosmetology State Board concerning the use of ozone in your area. To activate the ozone function, use the on/off switch located next to the timer knob. When ozone is in use, the green activate lamp will light up.



- 9.** Cover the client's upper chest area with towel or cloth to absorb excess moisture.



- 10.** Allow 10 minutes for steam to appear. The steam should be a steady fine mist before directing the steam towards the client.
- 11.** Adjust the steam nozzle to the desired direction, keeping a minimum distance of 12 inches from face.
- 12.** Position the steam arm in an upward direction so the steam will travel up the torso towards the face.

AROMA THERAPY NOZZLE

The AT-1 Aroma Therapy Nozzle is an optional item that can be easily attached to the regular nozzle for the use of aromatic therapy oil. This allows the client to experience the benefits of aromatic oils while simultaneously protecting the vaporizer from clogging and spouting.

Maintenance

Safety

- Perform a safety check before the start of each day's use. If the unit is unsafe or needs repair, call the manufacturer for information on sending the unit in for service.

The Water Jar

- Only use distilled water. The use of tap water will eventually cause malfunction of the machine due to calcium build-up
- Do not use essential oils in the water jar.
- Always maintain the proper water levels. The distilled water should always remain between the two red lines.
- Improper water levels may cause the vaporizer to spit.
- Do not add cold water to a hot water jar. This will stress and crack the jar.
- Check for steam pipe obstruction/mineral build-up and alignment.
- If the water level is below the red line the water level sensor safety fuse may burn out.

The Steam Arm

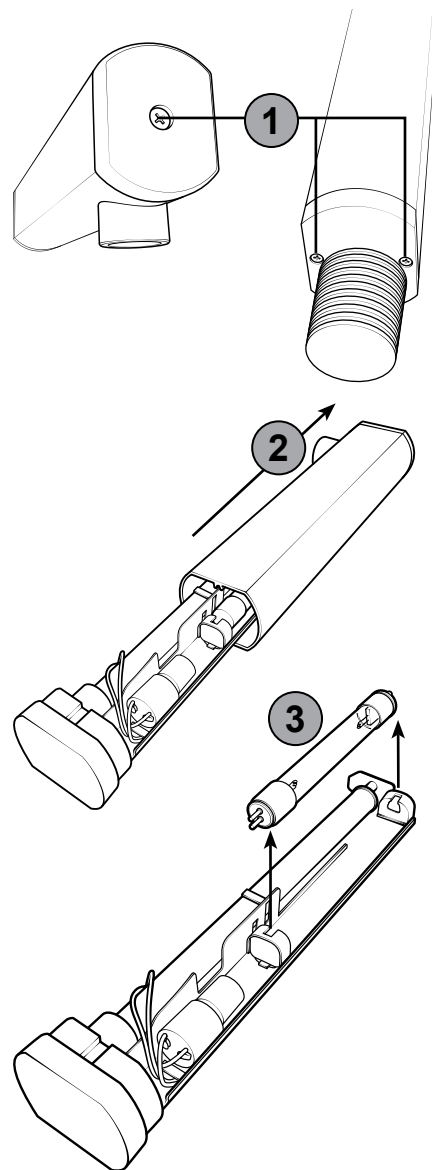
- Always maintain a minimum safe distance of 12" from the client's skin.
- Position the steam arm in an upward direction so the steam will travel up the torso towards the face.
- Wait until the steam is at a steady flow before directing towards the client.

Cleaning


- Maintain a clean heating element. Use a soft brush to clean the heating element.
- Empty the water jar at the end of each day's use.
- Do not run harsh chemicals or cleaning agents through the machine.
- Only use essential oils on the aroma therapy nozzle (if available).

Removing the Ozone Lamp

1. Using a Phillips head screwdriver, remove the screw on top of the nozzle as well as the two screws on the bottom.
2. Slide the nozzle cover off.
3. Gently remove the ozone lamp from the nozzle body.
4. Replace the ozone lamp and slide the cover back on.
5. Replace and tighten the screws.



Troubleshooting

Problem	Solution
Basic issues: When the machine fails to work properly	<ul style="list-style-type: none"> • Check the power cord for proper connection. • Make sure the water level is between the top and bottom red lines. • Check the power source by connecting another electrical appliance to the AC outlet. • If the water level is repeatedly below the lower red line, the thermostat may burn out. If the thermostat has burned out, the power lamp will not light and the vaporizer will not turn on. Please contact an authorized agent for repair. • If the problem persists, please contact your dealer for assistance. • To prevent an electrical shock, DO NOT DISASSEMBLE THE MACHINE.
Steam escaping from jar	Wait until the jar has cooled, then try to tighten the retaining screw located beneath the jar for a tight seal. Check that the gasket ring is atop the water jar and in good condition.
Heating Element Shuts Off There is power but the heating element has shut off. The vaporizer has been in use continuously.	<ul style="list-style-type: none"> • Move the timer knob  to the OFF position. • Wait 5-10 minutes before turning the vaporizer back on. Restart the vaporizer. • If your unit(s) becomes too hot or if the water level falls below the red line, the thermostat will shut off the heating element. After cooling to the proper temperature, the element will operate normally. • Wait until both the heating element and glass jar cools before adding water.
External Fuse There is power but no steam. The vaporizer starts up but then stops.	<ul style="list-style-type: none"> • Check to see that the external fuse is in proper working condition. • This fuse should be a minimum 8amps. A 10amp fuse is optimal. • This fuse will only burn out if the machine is repeatedly used with low water levels or no water.
Internal Fuse There is no power/ the power lamp does not light up. There is a burnt smell.	<ul style="list-style-type: none"> • The internal thermostat (temperature control) and thermostat fuse protector may be damaged. • There are no user-serviceable parts inside. • The unit must be sent in for repair/ servicing. Please call for an RMA number.

Subject	Problem	Solution
Power	Power but no steam	If there is intermittent power or power but not steam, locate the external fuse. Check condition and proper amperage 8-10AMP. Allow the unit to cool down 10-15min then restart again.
	No Power	Check or switch to a different wall outlet. Check that the timer knob is correctly positioned and not spinning in place. The thermostat and thermostat protector may need to be replaced.
Water Leaking	Jar & Gasket	Check condition of jar and gasket for cracks or damage. Tighten using tension knob
	Bubbling Over	The vaporizer will bubble up over the funnel in two instances: (1) Obstruction - Debris in the steam ways; kink or twist in the silicon pipe. (2) Additive in the water like oils and or acidic based cleansers.
Steam Output	Ozone Lamp	The ozone lamp illuminates the water vapor making it appear that there is an increase in steam volume. Check condition of ozone lamp and starter. Parts may be loose or may need to be replaced.
	Funnel Cap	If the funnel cap is missing, there will be a decrease in steam pressure as steam escapes from the top fill funnel as opposed to traveling up through the steam arm Check that the funnel cap is in place and in good condition.
Spitting or Popping	Spitting	When are you experiencing the spitting: beginning, middle, or end? Spitting in the begin or end may be expected as the machine is coming to a boil or running low on water. Intermittent spitting may be caused by use of aromatherapy oils, water mineral build-up, misaligned steam arm, or a kink in the silicone tube.
	Popping / Gurgling	A popping or gurgling sound is an indication that the silicone tube may need to be replaced or repaired. This symptom may be accompanied by low steam volume.
Timer	Springing Back	The timer functions as the ON/OFF switch. Springing back to "0" or not moving requires service. Check to see that the timer knob is properly installed onto the timer mechanism
	Disarming the Bell	The bell may be disarmed by bending the strike. This may be performed by the customer.
Wobbling	Stand	Review stand assembly instructions. Check for loose bolts and tighten with tool. Hand tightening is not strong enough- please use a wrench. Pay particular attention to the center bolt for the telescoping pole assembly.

Warranty

ONE YEAR LIMITED WARRANTY

WARRANTY COVERAGE

Garfield's warranty obligations for this product are limited to the terms set forth below:

This warranty extends to you only if you are the first end-user purchaser. Garfield Intl. Co., Inc. warrants this product against defects in material or workmanship for a period of one (1) year from the date of original purchase and is valid in the United States of America, not including shipping.

If a defect arises and a valid claim is received by Garfield within the Warranty Period, at its option, Garfield will (A) repair the product at no charge, using new or refurbished replacement parts, (B) exchange the product with a product that is new or which has been manufactured from new or serviceable used parts and is at least functionally equivalent to the original product.

EXCLUSIONS & LIMITATIONS

This warranty does not apply:

(A) To regular cleanings; (B) To glass jars/parts, hoses, neckrests, rubber parts, accessories, attachments, bulbs, fuses; parts otherwise deemed by the manufacturer as "wear-and-tear" items; detachable parts and/or accessories; (C) To damage caused by accident, abuse, misuse, misapplication, or non-Garfield products; (D) To damage caused by service performed by anyone other than authorized Garfield technicians; (E) To a product or a part that has been modified without the written permission of Garfield; (F) If any Garfield serial number has been removed or defaced

OBTAINING WARRANTY SERVICE

Before seeking warranty service, please review the instructions manual.

This warranty does not include shipping costs. In order to obtain warranty service, the product must be delivered to and picked up from the manufacturer at the user's expense. Before you deliver your product for warranty service it is your responsibility to (A) provide a serial number and obtain a return authorization number, and (B) securely pack the items/units. Items damaged during shipping for repair will not be covered by this warranty.

PARAGON[®]

Garfield Intl. Co., Inc.
15977 Heron Avenue
La Mirada, Ca 90638

Paragon[®] is a Trademark of Garfield International.