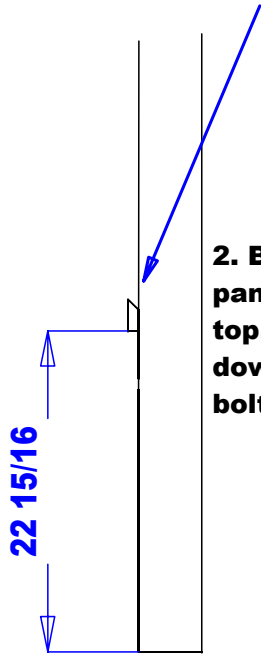
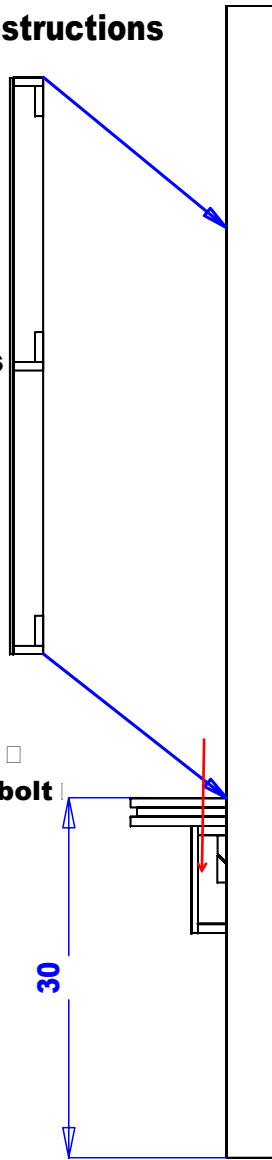


404-30 Ledge & Mirror Frame Installation Instructions

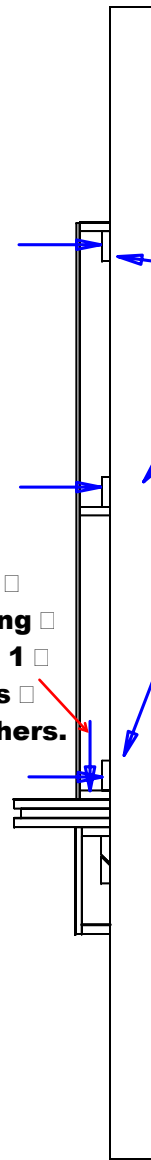
1. French cleat should be attached to the wall by screwing through the cleat into wall stud or blocking using 3" wood screws provided. The cleat should be level and at the indicated height.



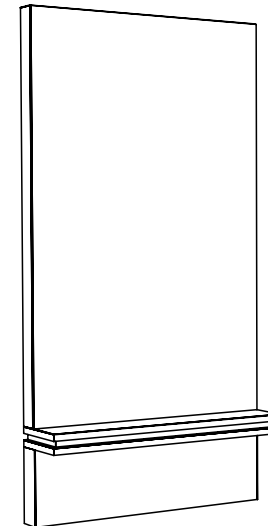
2. Bolt shelf on to modesty panel by setting shelf on the top, center left to right, and bolt down using provided 2 3/4" bolts and washers.



3. Bolt frame to shelf using provided 1 1/4" bolts and washers.



4. Frames should be attached to wood framed walls by screwing through the interior back cleats into wall studs or blocking. Use provided 3" wood screws for wood framed walls. Fasteners for other wall types are not provided.



5. Mirrors are provided with mirror clips and wood screws. Attach one mirror clip at each corner approximately 2" in from the vertical edge. See diagram 2.

Quantity -

Finish Schedule

Face Color -
 Top Color -
 Toe Color -
 Pulls -
 Interior -
 Other (Specify) -

Installation Notes:

1. All hardware needed for assembly is included.
2. Large items are preassembled at the factory to ensure proper alignment. Items are then disassembled into manageable sections for shipping purposes and ease of reassembly.
3. Shipping cleats need to be removed before installation. These cleats are installed to prevent damage.

collins

Collins Manufacturing
 809 E 20th Street
 Cookeville TN 38501

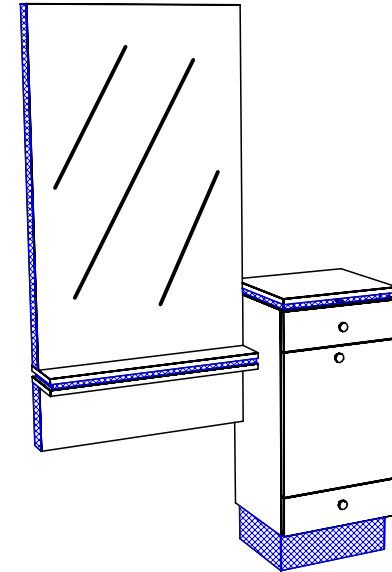
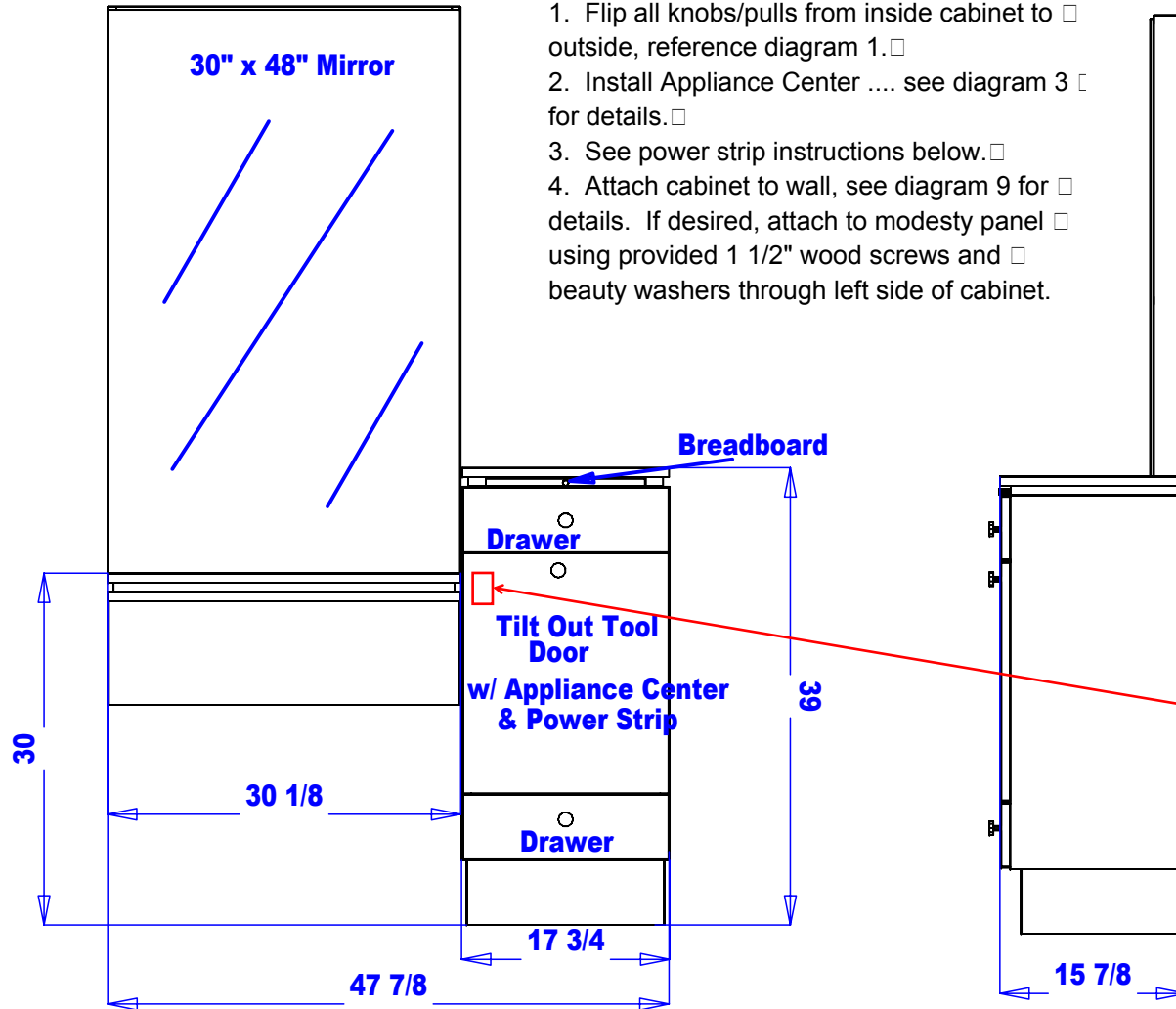
Title: **QSEp Styling Station w/ Mirror Frame & Ledge**

Size: # **405-48** Drawn By:

Date: **11/04/03** Sheet #: **1**

INSTALLATION INSTRUCTIONS CONT'D

1. Flip all knobs/pulls from inside cabinet to outside, reference diagram 1.
2. Install Appliance Center see diagram 3 for details.
3. See power strip instructions below.
4. Attach cabinet to wall, see diagram 9 for details. If desired, attach to modesty panel using provided 1 1/2" wood screws and beauty washers through left side of cabinet.



POWER STRIP INSTRUCTIONS

1. Mount power strip on mounting screws inside the cabinet at the location shown to the left.
2. Cord may exit through provided grommet hole in the bottom/rear of cabinet, or you may provide your own means of providing power.

This drawing is the property of Collins Manufacturing Company and is protected under copyright law.

Quantity -

Finish Schedule

- Face Color -
- Top Color -
- Toe Color -
- Pulls -
- Interior -
- Other (Specify) -

Installation Notes:

1. All hardware needed for assembly is included.
2. Large items are preassembled at the factory to ensure proper alignment. Items are then disassembled into manageable sections for shipping purposes and ease of reassembly.
3. Shipping cleats need to be removed before installation. These cleats are installed to prevent damage.

collins Collins Manufacturing
2000 Bowser Rd.
Cookeville TN 38506

Title: QSEp Styling Station w/ Mirror Frame & Ledge		
Size:	#: 405-48	Drawn By:
Date:	Sheet #: 2	