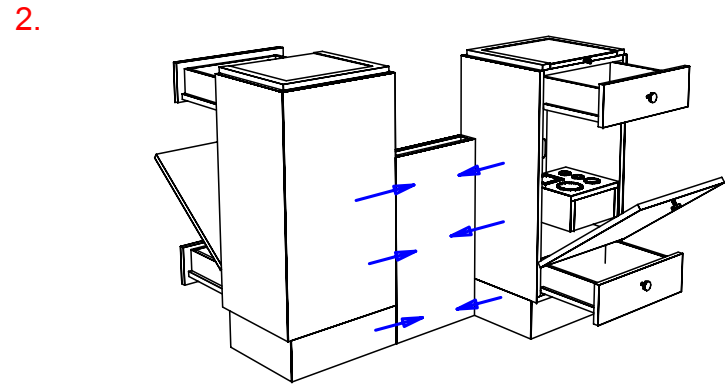
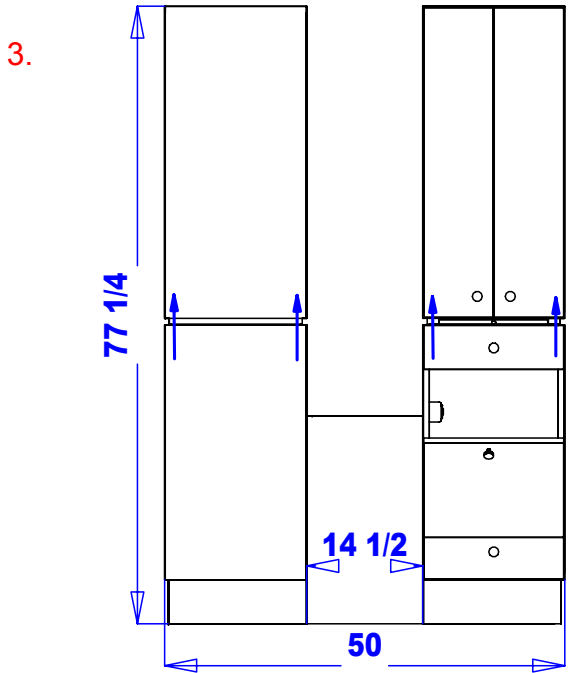


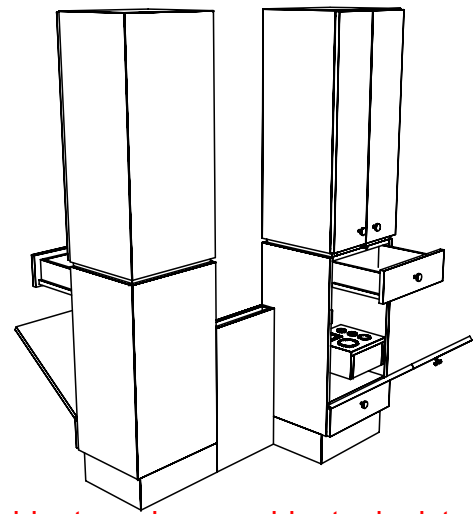
Set cabinets in place as depicted here. □
 Remove drawers by fully extending and □
 releasing from tracks by pressing tab □
 found on the side of the drawer box.



1 3/4" Bolts
 Set lower panel between cabinets, flush on with □
 back of each cabinet, and secure using □
 provided bolts from the inside of the cabinets.



2" Bolts



Set upper cabinets on lower cabinets depicted above. Secure up □
 through lower cabinets using provided bolts. Flush the back and sides of □
 the upper and lower cabinets.

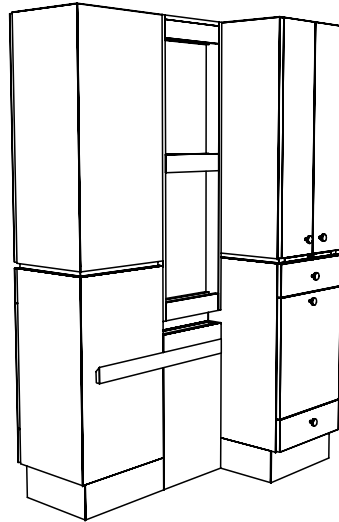
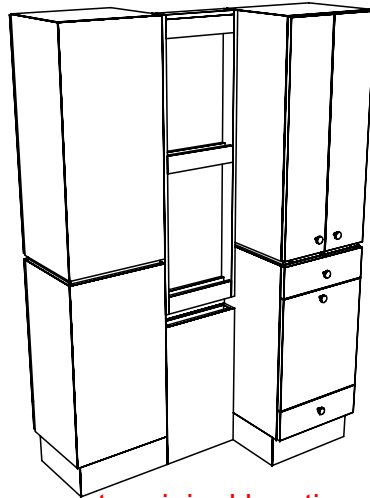
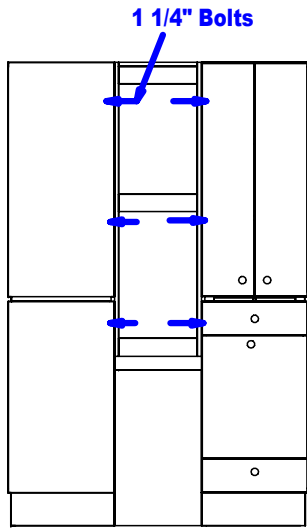
Quantity -

Finish Schedule
Face Color -
Top Color -
Toe Color -
Pulls -
Interior -
Other (Specify) -

Installation Notes:
1. All hardware needed for assembly is included.
2. Large items are preassembled at the factory to ensure proper alignment. Items are then disassembled into manageable sections for shipping purposes and ease of reassembly.
3. Shipping cleats need to be removed before installation. These cleats are installed to prevent damage.

collins		Collins Manufacturing 809 E 20th Street Cookeville TN 38501	
Title: QSEp Martin Styling Island			
Size:	#: 413-50	Drawn By:	
Date: 05/06/04	Sheet #: 6		

4.

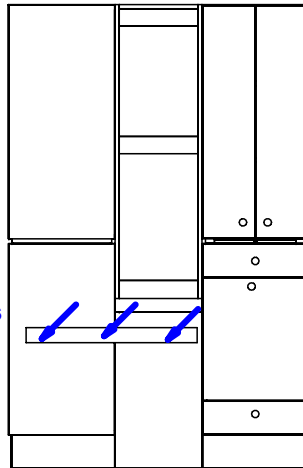


Replace drawers to original location. Insert upper center frame, flushing the top of the frame to the top of the cabinets, and securing tightly using provided bolts.

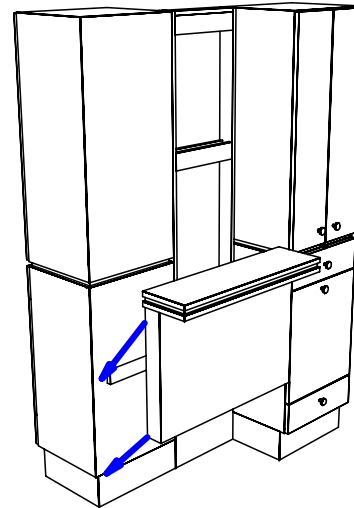
5.

Attach lower part of french cleat to lower assembly, attaching the cleat using provided screws in pre-assembled, pre-drilled hole locations.

1 1/4" Wood Screws



6.



Hang shelf from french cleat attached to lower cabinets and be sure to slide to the right as securely against right cabinet as possible.

Quantity -

Finish Schedule

Face Color -
 Top Color -
 Toe Color -
 Pulls -
 Interior -
 Other (Specify) -

Installation Notes:

1. All hardware needed for assembly is included.
2. Large items are preassembled at the factory to ensure proper alignment. Items are then disassembled into manageable sections for shipping purposes and ease of reassembly.
3. Shipping cleats need to be removed before installation. These cleats are installed to prevent damage.



Collins Manufacturing
 809 E 20th Street
 Cookeville TN 38501

Title: **QSEp Martin Styling Island**

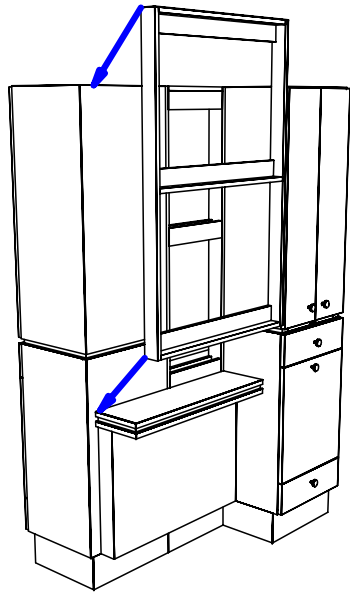
Size: # **413-50**

Drawn By:

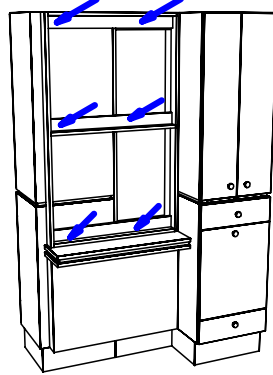
Date: **05/06/04**

Sheet #: **7**

7.

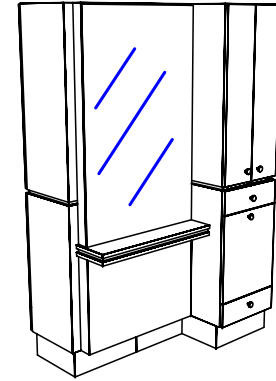
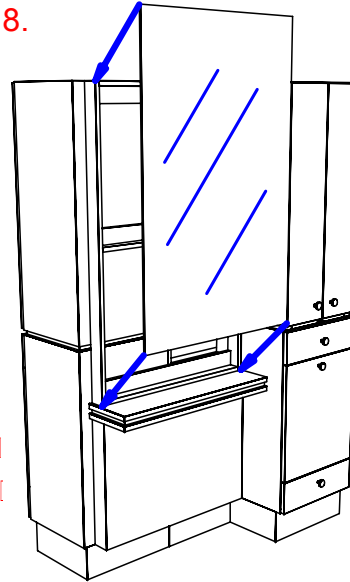


1 1/4" Wood Screws



Set mirror frame in place as depicted above, push as tightly as possible against right cabinet and secure using provided wood screws.

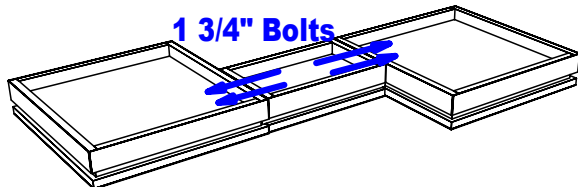
8.



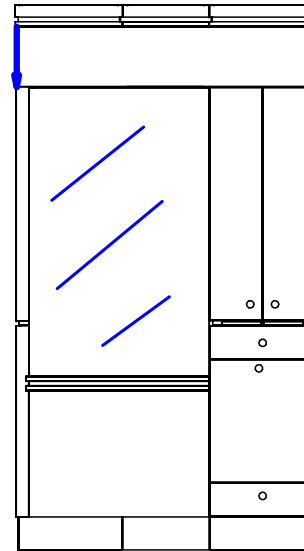
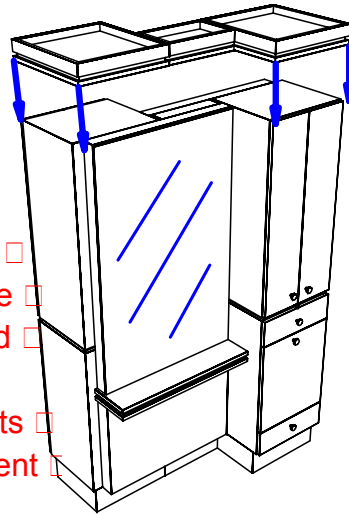
Mirrors are provided with mirror clips and wood screws. Attach one mirror clip at each corner approximately 2" in from the vertical edge.

9.

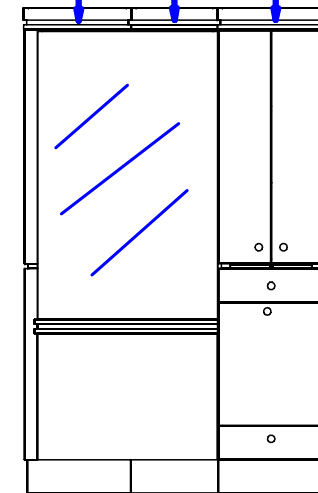
1 3/4" Bolts



Assemble upper soffit with provided bolts and screws. Carefully, two people, set the upper soffit on the upper cabinet, provided for as equal spacing around the top as possible. Attach middle with provided bolts locking it into place, and reinforce attachment with a few extra provided wood screws.



2 1/2" Wood Screws 3" Bolts 2 1/2" Wood Screws



Quantity -

Finish Schedule

Face Color -
 Top Color -
 Toe Color -
 Pulls -
 Interior -
 Other (Specify) -

Installation Notes:

1. All hardware needed for assembly is included.
2. Large items are preassembled at the factory to ensure proper alignment. Items are then disassembled into manageable sections for shipping purposes and ease of reassembly.
3. Shipping cleats need to be removed before installation. These cleats are installed to prevent damage.

collins

Collins Manufacturing
 809 E 20th Street
 Cookeville TN 38501

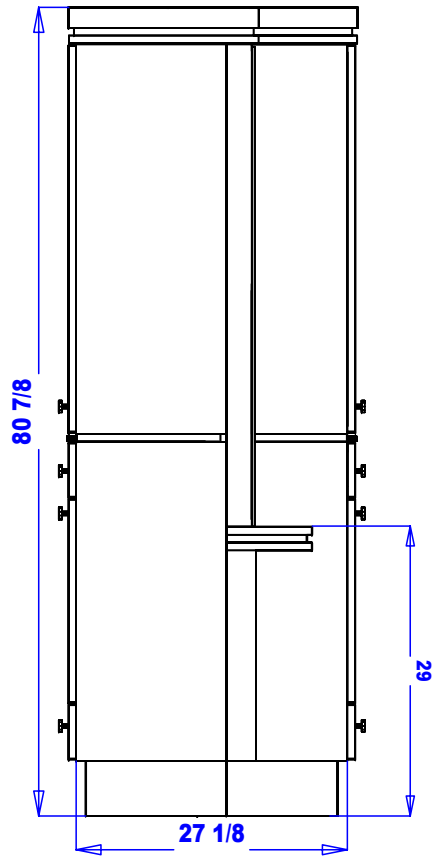
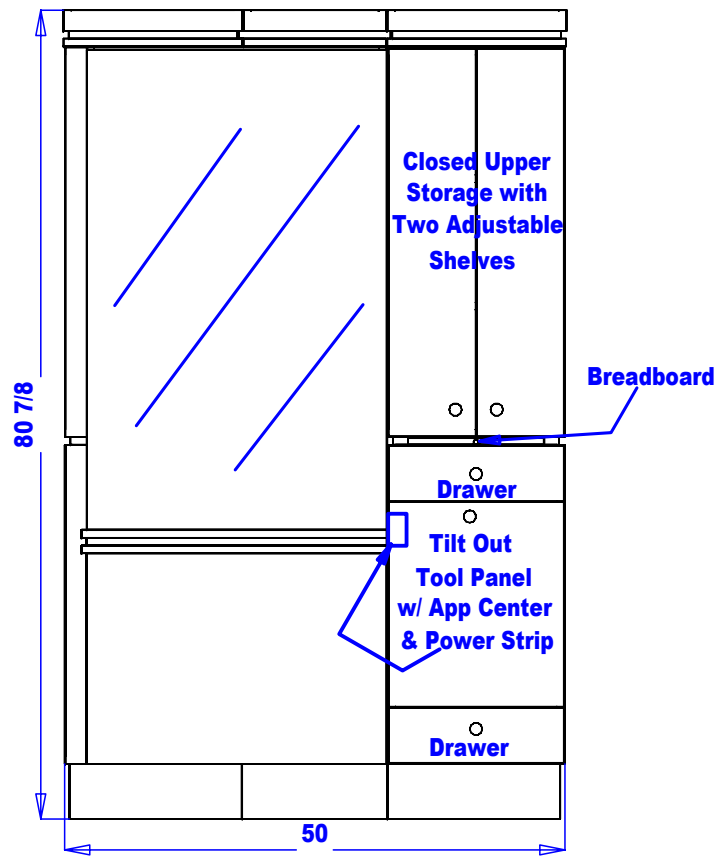
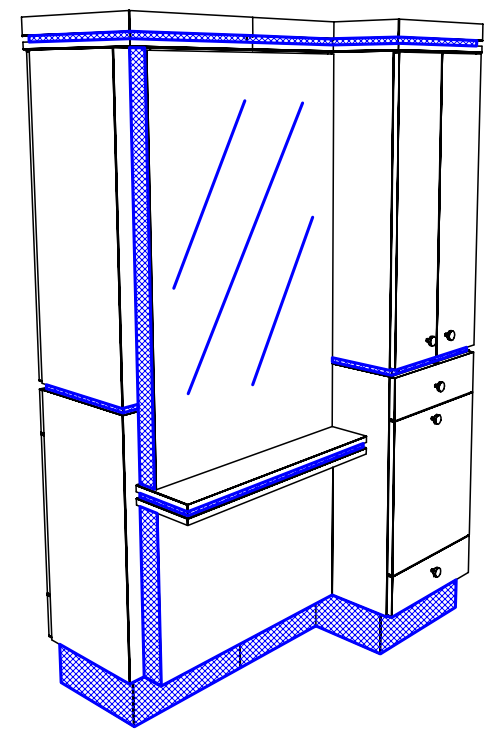
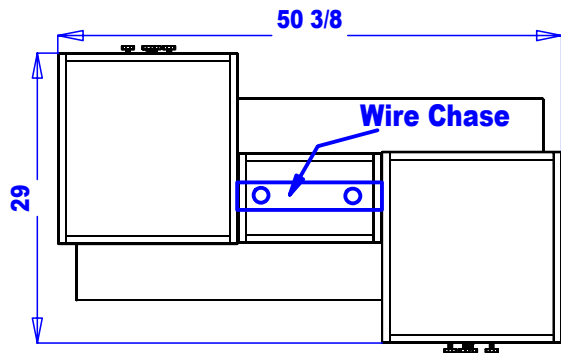
Title: **QSEp Martin Styling Island**

Size: # **413-50**

Drawn By:

Date: **05/06/04**

Sheet #: **8**



Preliminary
Not For Construction

This drawing is the property of Collins Manufacturing Company and is protected under copyright law.

Quantity -

Finish Schedule	
Face Color -	
Top Color -	
Toe Color -	
Pulls -	
Interior -	
Other (Specify) -	

Installation Notes:

1. All hardware needed for assembly is included.
2. Large items are preassembled at the factory to ensure proper alignment. Items are then disassembled into manageable sections for shipping purposes and ease of reassembly.
3. Shipping cleats need to be removed before installation. These cleats are installed to prevent damage.

Collins Manufacturing 809 E 20th Street Cookeville TN 38501		Title: QSEp Martin Styling Island
		Size: #: 413-50 Drawn By:
Date: 05/19/04		Sheet #: 9