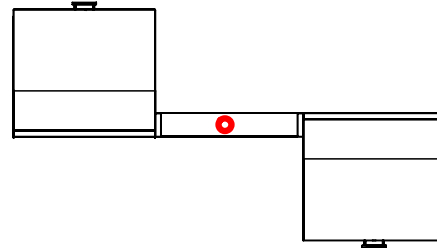
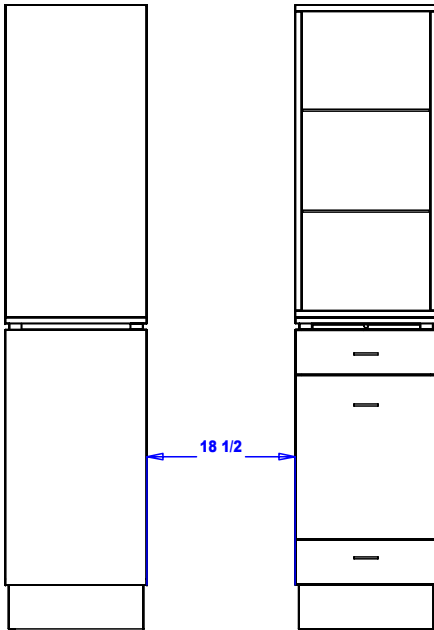
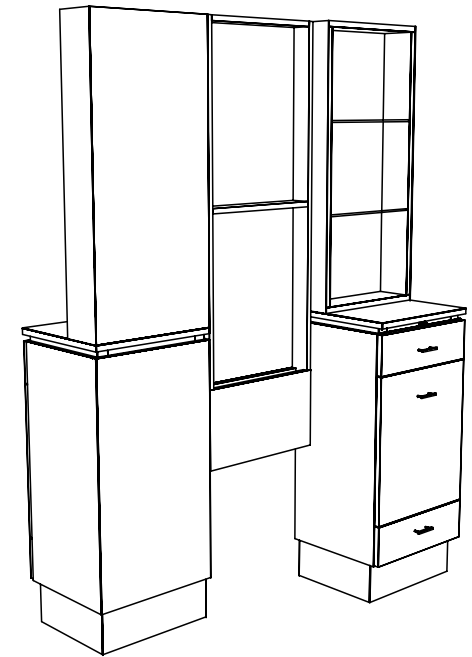
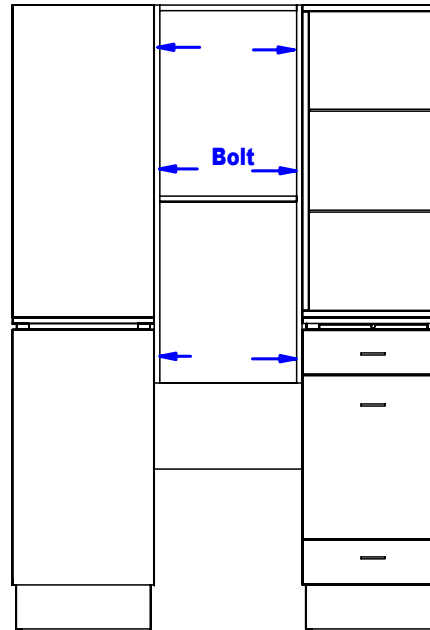


Set upper retail on base cabinets. Remove top drawer and bolt up through the counter top into the bottom of the retail displays. Position the two cabinets as pictured here.



Mount frame in between the two cabinets flushing the top with the top of the retail cabinets (see below) and the faces of the frame with the backs of the cabinets (see above). Insert bolts in provided holes.



Cabinets are marked for ease of assembly. Match up like markings for both vertical and horizontal sections. Markings will be on the backs or other surfaces that are inconspicuous after installation.

Quantity -

Finish Schedule

Face Color -
 Top Color -
 Toe Color -
 Pulls -
 Interior -
 Other (Specify) -

Installation Notes:

1. All hardware needed for assembly is included.
2. Large items are preassembled at the factory to ensure proper alignment. Items are then disassembled into manageable sections for shipping purposes and ease of reassembly.
3. Shipping cleats need to be removed before installation. These cleats are installed to prevent damage.



Collins Manufacturing
 809 E 20th Street
 Cookeville TN 38501

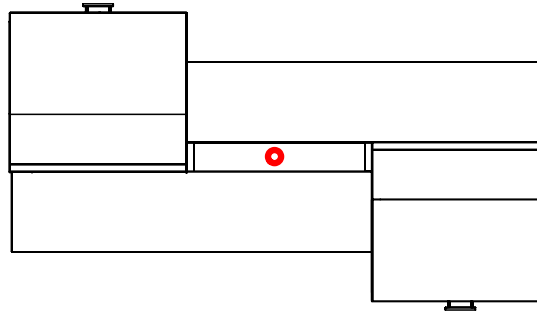
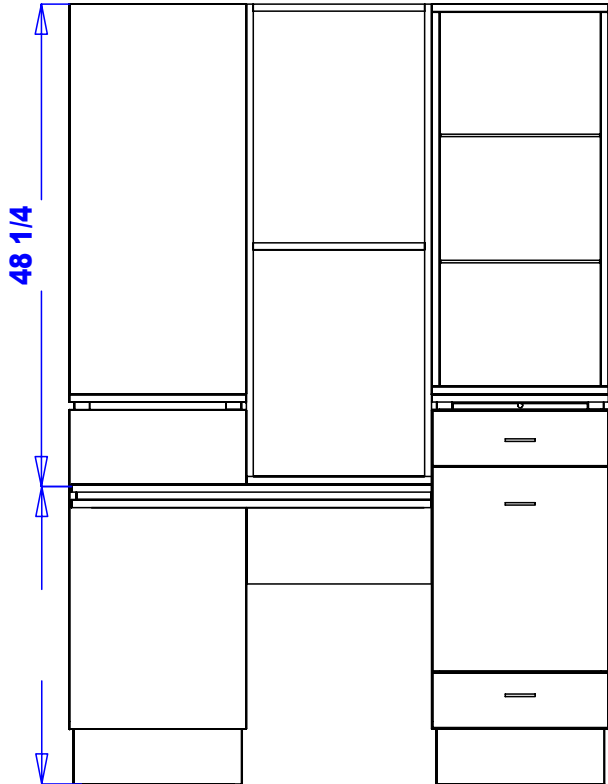
Title: **QSEp Vincent Styling Island**

#: # **415-54** Drawn By:

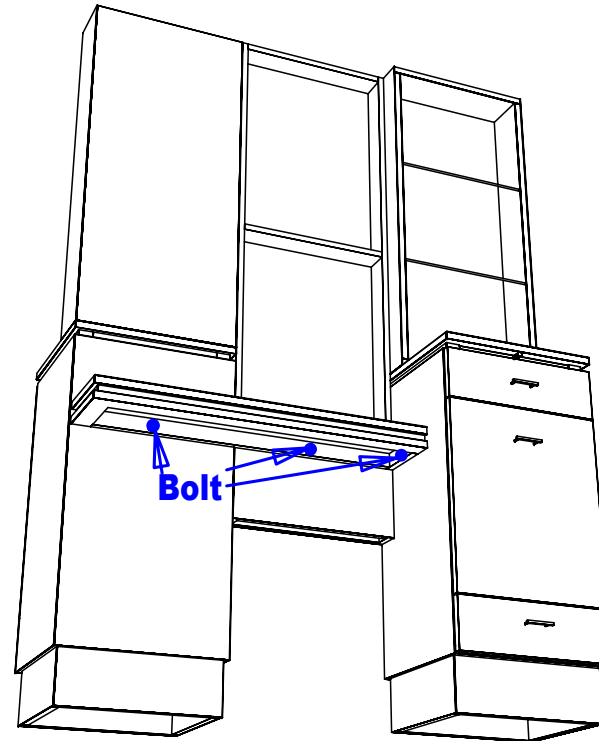
Date: Sheet #: **4**

Mount purse shelf on both sides at the indicated height (see below) using provided bolts and holes.

IMPORTANT: After mounting the shelves install the mirrors on both sides above the shelves using the provided mirror clips and screws.



Cabinets are marked for ease of assembly. Match up like markings for both vertical and horizontal sections. Markings will be on the backs or other surfaces that are inconspicuous after installation.



Quantity -

Finish Schedule

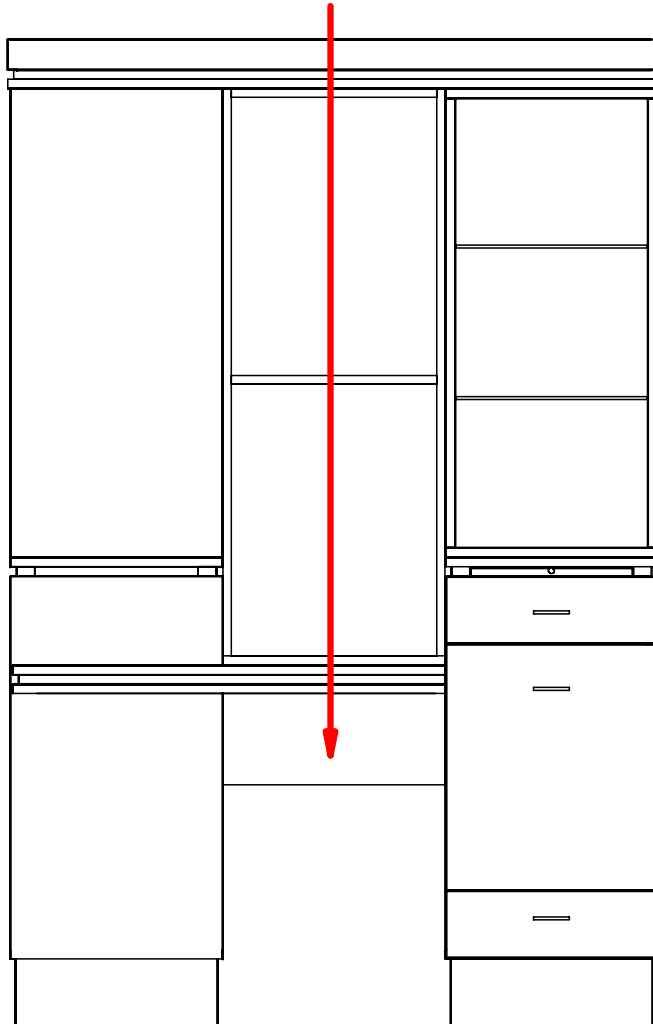
Face Color -
 Top Color -
 Toe Color -
 Pulls -
 Interior -
 Other (Specify) -

Installation Notes:

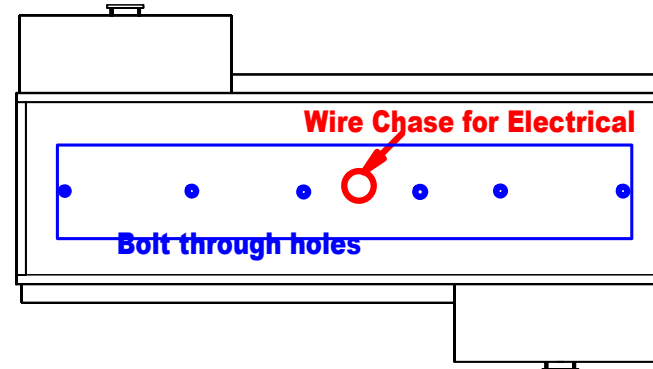
1. All hardware needed for assembly is included.
2. Large items are preassembled at the factory to ensure proper alignment. Items are then disassembled into manageable sections for shipping purposes and ease of reassembly.
3. Shipping cleats need to be removed before installation. These cleats are installed to prevent damage.

collins		Collins Manufacturing 809 E 20th Street Cookeville TN 38501	
Title: QSEp Vincent Styling Island			
#:	#: 415-54	Drawn By:	
Date:	Sheet #: 5		

Wire Chase for Electrical



Cabinets are marked for ease of assembly. Match up like markings for both vertical and horizontal sections. Markings will be on the backs or other surfaces that are inconspicuous after installation.



Set soffit on top of assembled station after installing the mirrors. Center the soffit front to-back as well as side-to-side. Attach using provided bolts in the marked holes from the top down.

Quantity -

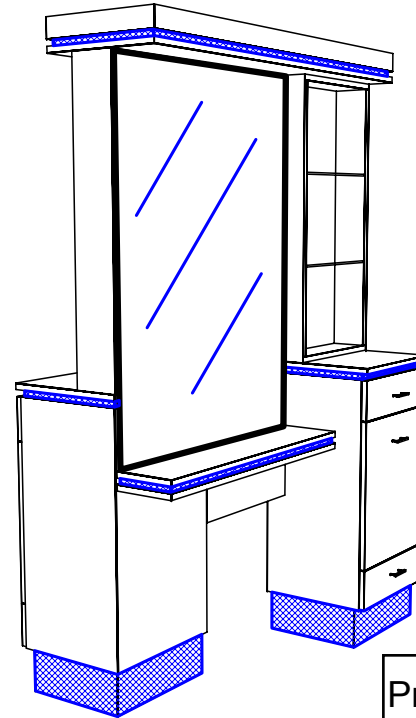
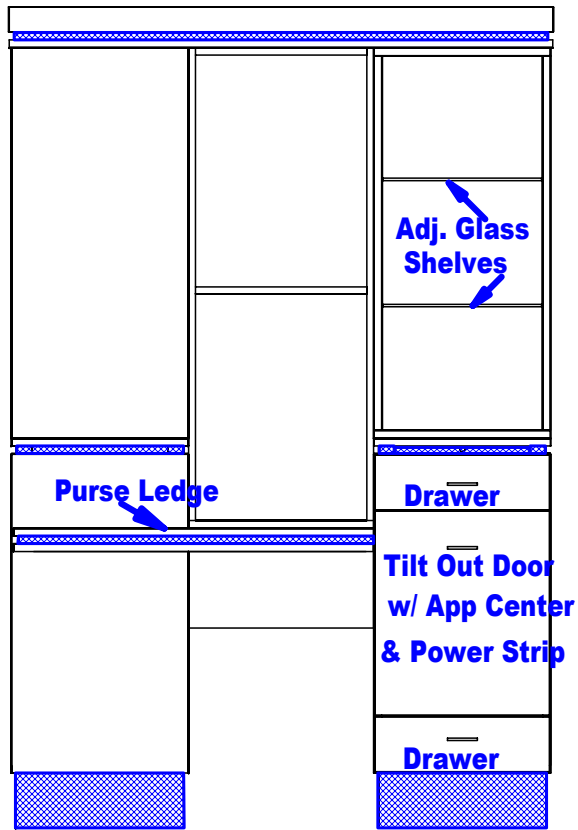
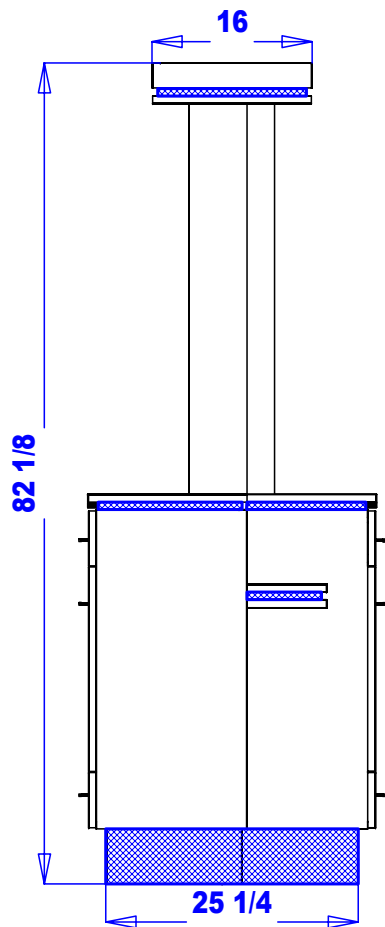
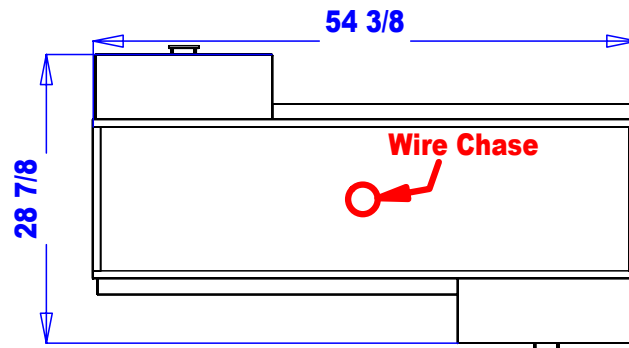
Finish Schedule

Face Color -
 Top Color -
 Toe Color -
 Pulls -
 Interior -
 Other (Specify) -

Installation Notes:

1. All hardware needed for assembly is included.
2. Large items are preassembled at the factory to ensure proper alignment. Items are then disassembled into manageable sections for shipping purposes and ease of reassembly.
3. Shipping cleats need to be removed before installation. These cleats are installed to prevent damage.

collins		Collins Manufacturing 809 E 20th Street Cookeville TN 38501	
Title: QSEp Vincent Styling Island			
#:	#:	415-54	Drawn By:
Date:			Sheet #: 6



Preliminary -

Not for Construction

This drawing is property of Collins Mfg. Co. and is protected under copyright law.

Quantity -

Finish Schedule

Face Color -

Top Color -

Toe Color -

Pulls -

Interior -

Other (Specify) -

General Notes:

1. All counter tops are to be made removable wherever possible.
2. Items must be broken into manageable sections For Shipping. Mark For Ease Of Reassembly.
3. Install Shipping Cleats Wherever Possible To Prevent Shipping Damage.
4. Purchased items Must Be Trial Fit Before Shipping.

collins

Collins Manufacturing
809 E 20th Street
Cookeville TN 38501

Title: **QSEp Vincent Styling Island**

#: # 415-54

Drawn By:

Date:

Sheet #: **7**