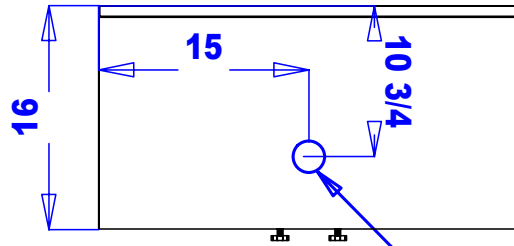
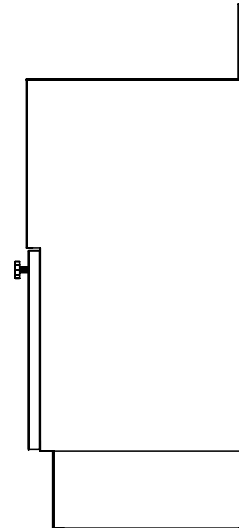
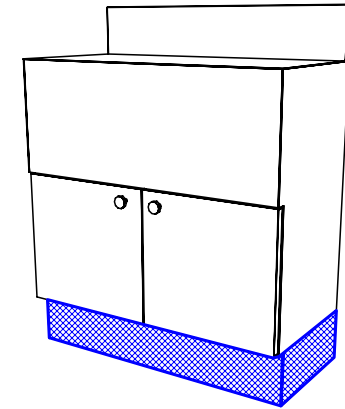
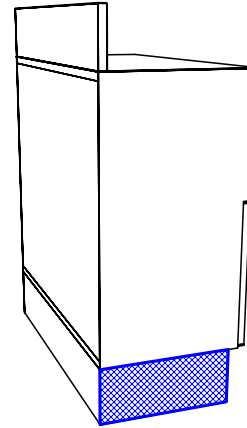
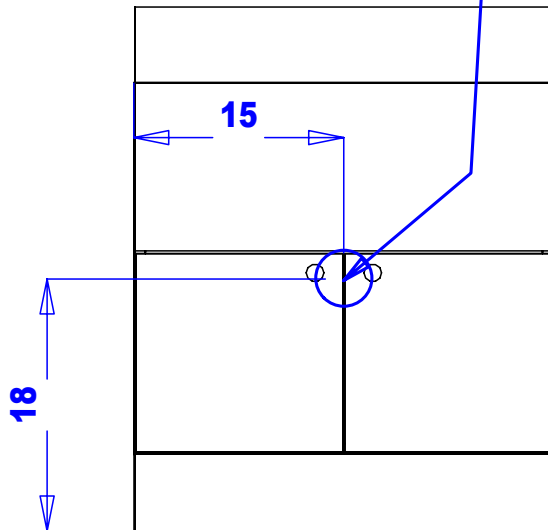


428-30 Plumbing Specifications



Drain Center Line



Back Splash is sent loosely with mending plates and screws. Either mount to the back of the cabinet with mending plates or liquid nail to the wall after installing shampoo cabinet and bowl.

Quantity -

Finish Schedule

Face Color -
 Top Color -
 Toe Color -
 Pulls -
 Interior -
 Other (Specify) -

Installation Notes:

1. All hardware needed for assembly is included.
2. Large items are preassembled at the factory to ensure proper alignment. Items are then disassembled into manageable sections for shipping purposes and ease of reassembly.
3. Shipping cleats need to be removed before installation. These cleats are installed to prevent damage.

collins		Collins Manufacturing 809 E 20th Street Cookeville TN 38501	
Title: QSEp Concept Bulkhead			
Size:	#: 428-30	Drawn By:	
Date: 01/13/04	Sheet #: 2		