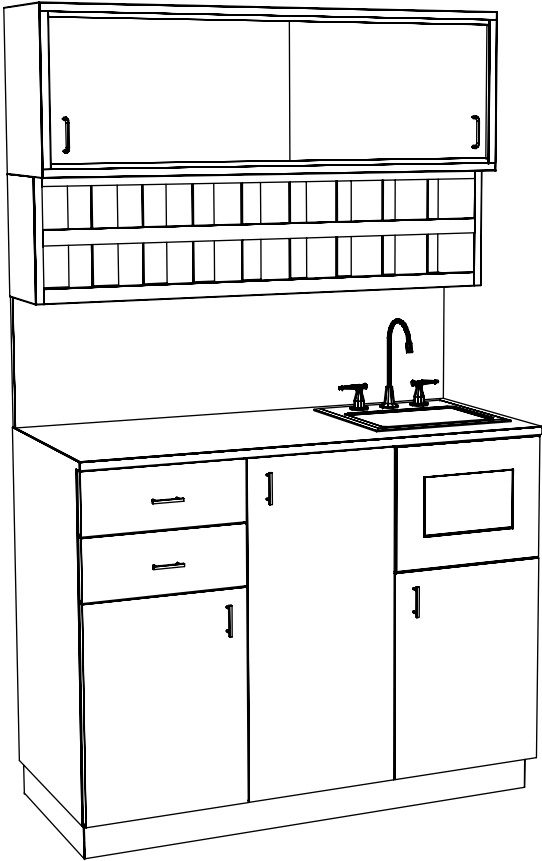


Drain Center Line



This drawing is the property of Collins Manufacturing Company and is protected under copyright law.

Installation Notes:

1. All hardware needed for assembly is included.
2. Large items are preassembled at the factory to ensure proper alignment. Items are then disassembled into manageable sections for shipping purposes and ease of reassembly.
3. Shipping cleats need to be removed before installation. These cleats are installed to prevent damage.

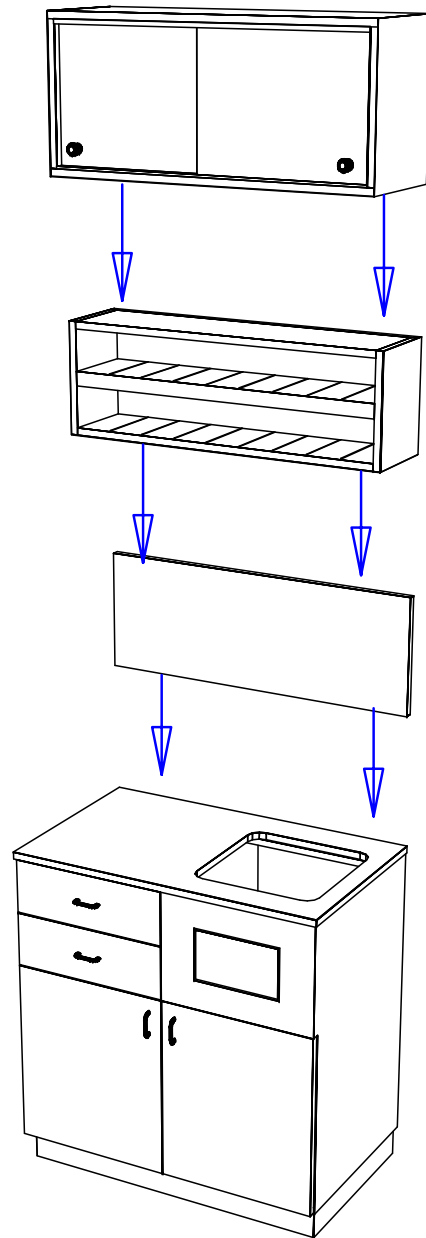
Finish Schedule

- Face Color -
- Top Color -
- Toe Color -
- Pulls -
- Interior -
- Other (Specify) -

collins		Collins Manufacturing 809 E 20th Street Cookeville TN 38501
Title: 432-48 QSE Color Bar		
Size:	#:	Drawn By:
Date:	Sheet #: 5	

This item is attached to the wall with wood screws. 3" wood screws and decorative washers are provided for wood framed walls. Fasteners for other wall types are to be obtained locally. Screw through the back panel in locations which will be inconspicuous after installation. Suggested locations include: under shelves, behind drawers, and locations hidden by products or supplies.

Back splash is to be attached to the wall with screws and/or construction adhesive depending upon the wall type and finish. If screws are used, locate them in inconspicuous locations if possible. Seal any joints between the counter top, splash, and wall with clear silicone.




Counter top joints and seams in proximity of sinks, shampoo bowls, or pedicure basins are to be sealed on-site with clear silicone caulk to prevent water intrusion and damage.

General Color Bar Installation Instructions

General Notes:

1. All counter tops are to be made removable wherever possible.
2. Items must be broken into manageable sections For Shipping. Mark For Ease Of Reassembly.
3. Install Shipping Cleats Wherever Possible To Prevent Shipping Damage.
4. Purchased items Must Be Trial Fit Before Shipping.

			Collins Manufacturing 2000 Bowser Road Cookeville, TN 38506		
Title: Color Bar Assy					
Size:		Drawing Number:		Drawn By:	
Date:				Sheet	