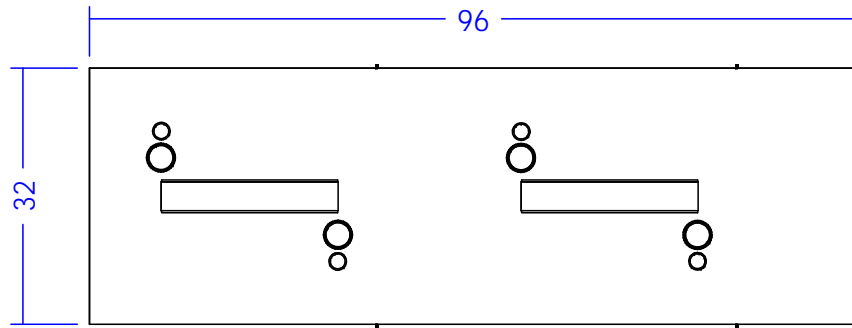
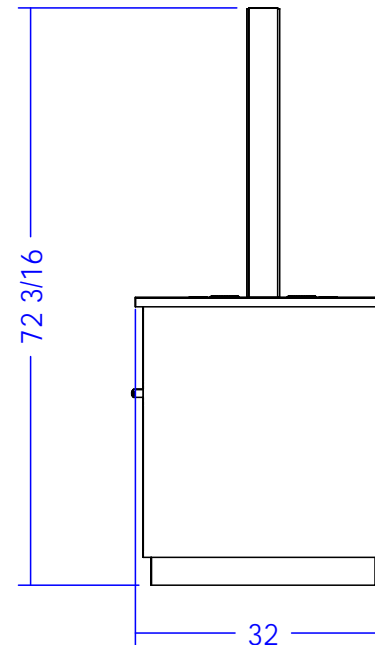
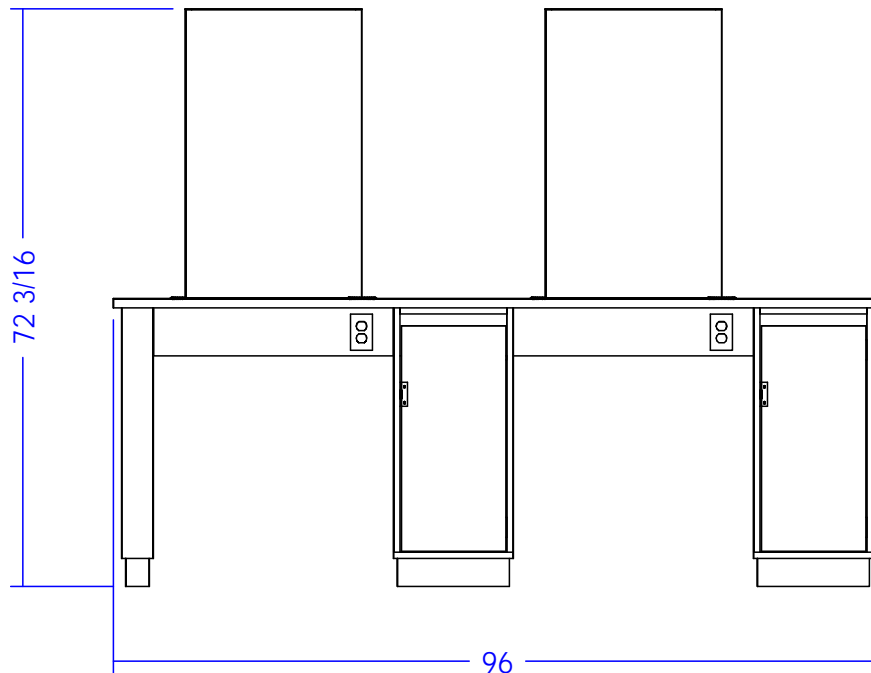


**Preliminary  
Not For Construction**

This drawing is the property of Collins Manufacturing Company and is protected under copyright law.



Wire Path Provided Through Unit



Quantity -


Finish Schedule - 73578.634

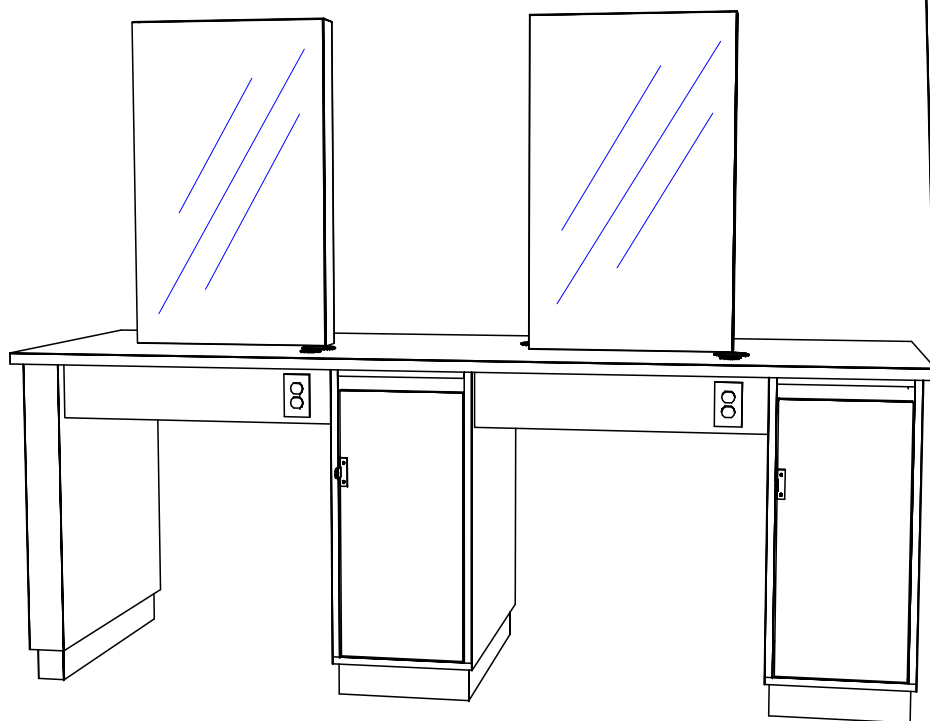
Face Color -  
Top Color -  
Toe Color -  
Reveal / Accent Color -  
Hardware - N/A  
Interior - Black Melamine  
Other (Specify) -

This drawing represents Collins Manufacturing Company's understanding of the desired item as was previously priced & ordered. Your signature indicates you have reviewed the drawing; and your approval will authorize Collins to initiate the acquisition of materials & subsequent production. More than modest changes may affect the price and/or manufacturing lead time.

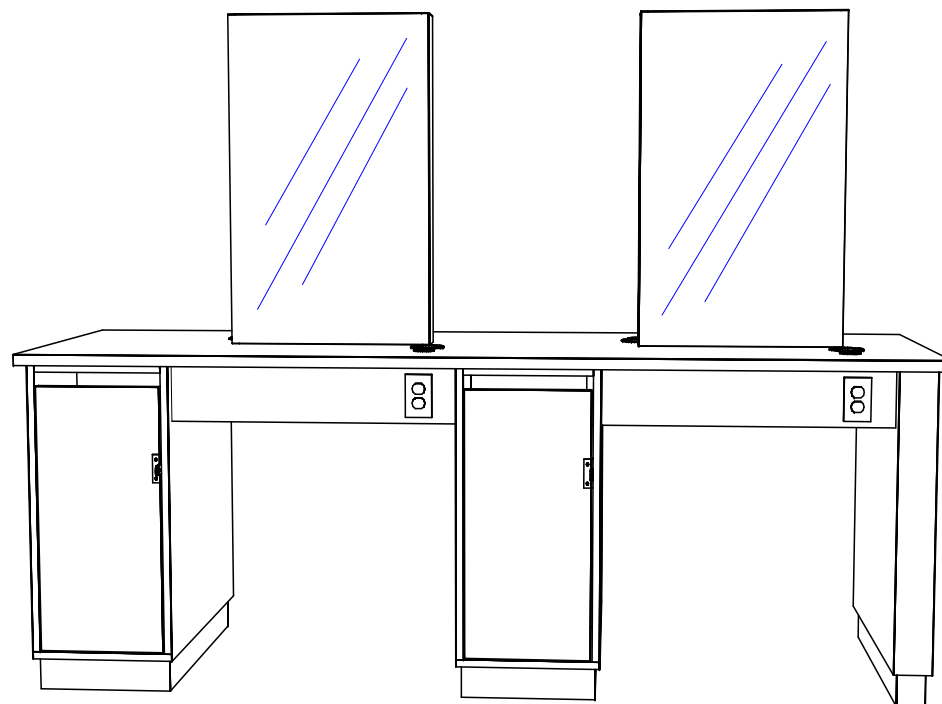
- ☐ Approved as drawn.  
☐ Approved w/ changes noted.  
☐ Not approved - re-submit.

Signature \_\_\_\_\_  
Company \_\_\_\_\_ Date \_\_\_\_\_

 Collins Manufacturing 2000 Bowser Road Cookeville, TN 38506		
Title: 73578.634		
Size: NTS	Drawing Number:	Drawn By:
Date: 08/16/10	Sheet	



Front View



Back View

Quantity -

Finish Schedule - 73578.634

Face Color -  
Top Color -  
Toe Color -  
Reveal / Accent Color -  
Hardware - N/A  
Interior - Black Melamine  
Other (Specify) -

This drawing represents Collins Manufacturing Company's understanding of the desired item as was previously priced & ordered. Your signature indicates you have reviewed the drawing; and your approval will authorize Collins to initiate the acquisition of materials & subsequent production. More than modest changes may affect the price and/or manufacturing lead time.

- ☐ Approved as drawn.  
☐ Approved w/ changes noted.  
☐ Not approved - re-submit.

Signature \_\_\_\_\_  
Company \_\_\_\_\_ Date \_\_\_\_\_

Preliminary  
Not For Construction

This drawing is the property of Collins Manufacturing Company and is protected under copyright law.

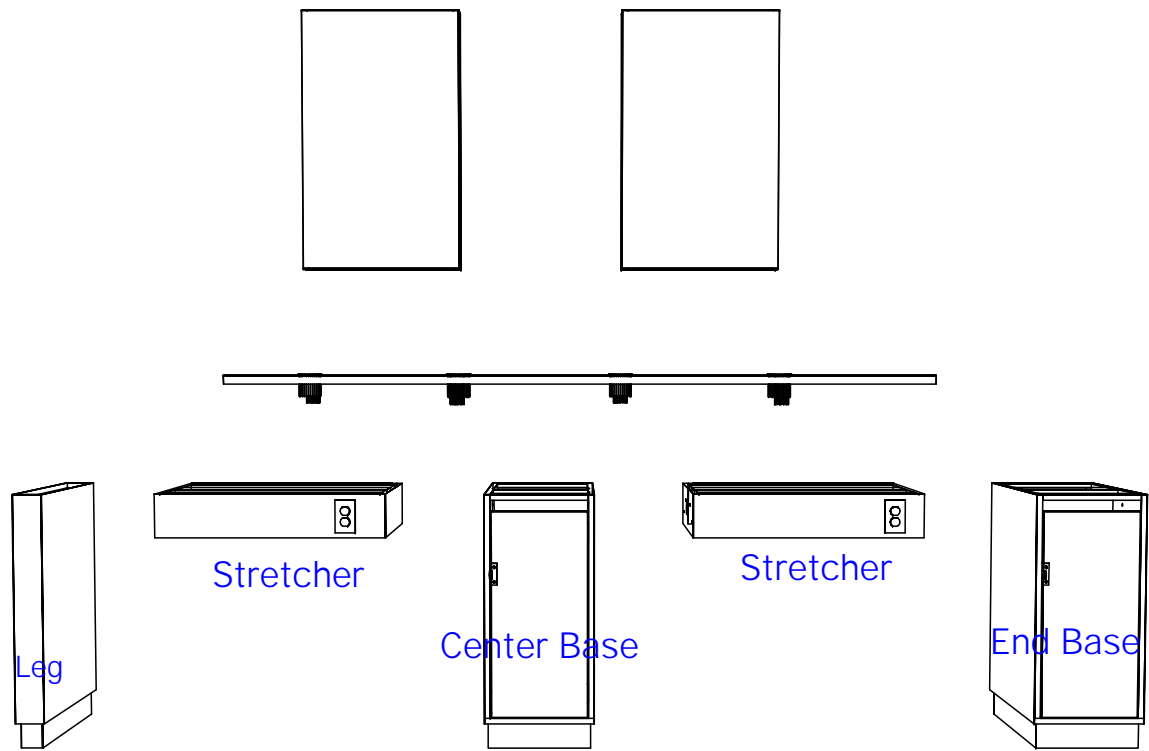
**collins** Collins Manufacturing  
2000 Bowser Road  
Cookeville, TN 38506

Title: 73578.634  
Size: NTS Drawing Number: Drawn By:  
Date: 08/16/10 Sheet

(1) Bolt through the interior sides of base cabinets into the pre-installed fasteners in the sides of the stretchers. Use the provided 1 1/2" decorative bolts. (2) Bolt through the right side of end stretcher (as shown) into the pre-installed fasteners in the leg. Use 1 1/2" decorative bolts. (3) Bolt through the top cleats of base cabinets and stretchers into the pre-installed fasteners inbedded into bottom of counter top. Use 1 1/4" hex head bolts and washers. (4) Bolt through bottom of mirror frames in the pre-installed fasteners in counter top. Use 1 3/4 hex head bolts nad washers. (5) Attatch mirrors to frames using the provided mirror clips and fasteners. Mirror frames are pre-drilled for mirror clips.

This item includes a duplex outlet. The outlet is rated at 15 amps. The outlets are to be wired by the electrician.

All electrical work is to be performed by a licensed electrical contractor and to be performed in accordance with all applicable national, state, and local codes.




Base cabinets and stretchers will be labeled on top cleats as shown above.

Quantity -

Finish Schedule - 73578.634

Face Color -
Top Color -
Toe Color -
Reveal / Accent Color -
Hardware - N/A
Interior - Black Melamine
Other (Specify) -

General Notes:
1. All counter tops are to be made removable wherever possible.
2. Items must be broken into managable sections For Shipping. Mark For Ease Of Reassembly.
3. Install Shipping Cleats Wherever Possible To Prevent Shipping Damage.
4. Purchased items Must Be Trial Fit Before Shipping.

 Collins Manufacturing 2000 Bowser Road Cookeville, TN 38506		
Title: 73578.634		
Size: NTS	Drawing Number:	Drawn By:
Date: 08/16/10	Sheet	