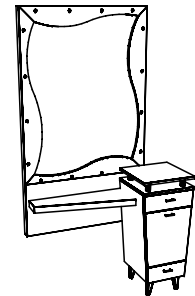
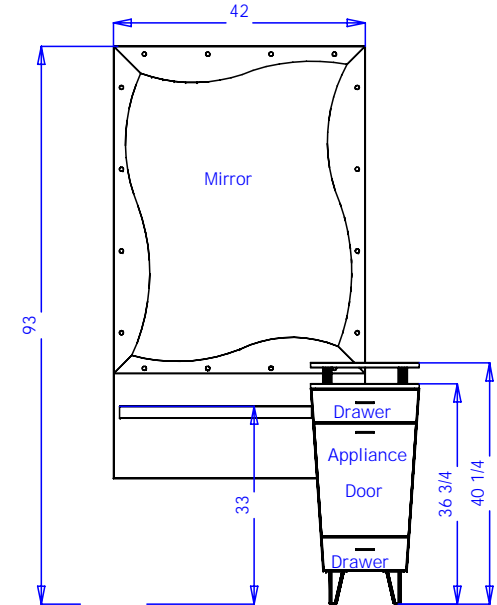
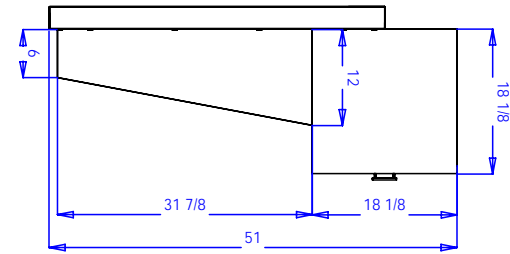


STEP 1. Mount mirror frame to wall by removing lower french cleat from back of frame and mount cleat to wall with (4) 3" wood screws into wall studs. Mount at a height so that when mirror frame is in place the distance from floor to the top of the mirror frame is 93". See diagram 7.

STEP 2. Set cabinet in place (see detail in top right corner). Remove drawers (see diagram 8). Mount cabinet to mirror frame by screwing (4) 1 1/2" wood screws with beauty washers through interior back panel of cabinet into mirror frame.

STEP 3. Mount purse ledge to mirror frame with (3) 1 1/4" wood screws through ledge into mirror frame. Mount ledge to cabinet with (2) 1 1/4" wood screws through ledge into cabinet.

Power strip is provided with a 4' grounded cord and (6) 15 amp outlets. Electrician is to cut outlet hole for cord and provide power supply.



Quantity - Qty

Finish Schedule - 795-51-1

Face Color - Face Color  
 Top Color - Top Color  
 Toe Color - (Specify)  
 Pulls - Chrome Wire  
 Interior - White  
 Other (Specify) -

Installation Notes:

1. All hardware needed for assembly is included.
2. Large items are preassembled at the factory to ensure proper alignment. Items are then disassembled into manageable sections for shipping purposes and ease of reassembly.
3. Shipping cleats need to be removed before installation. These cleats are installed to prevent damage.

Collins Manufacturing 2000 Bowser Rd. Cookeville TN 38506		
Title: Customer Name		
Size:	#: SoNumber	Drawn By: Engineer
Date: 09/19/06	Sheet #: 6	