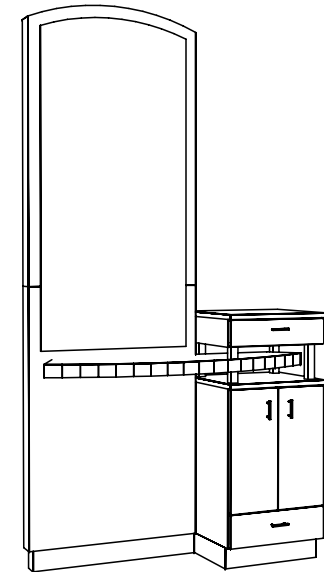
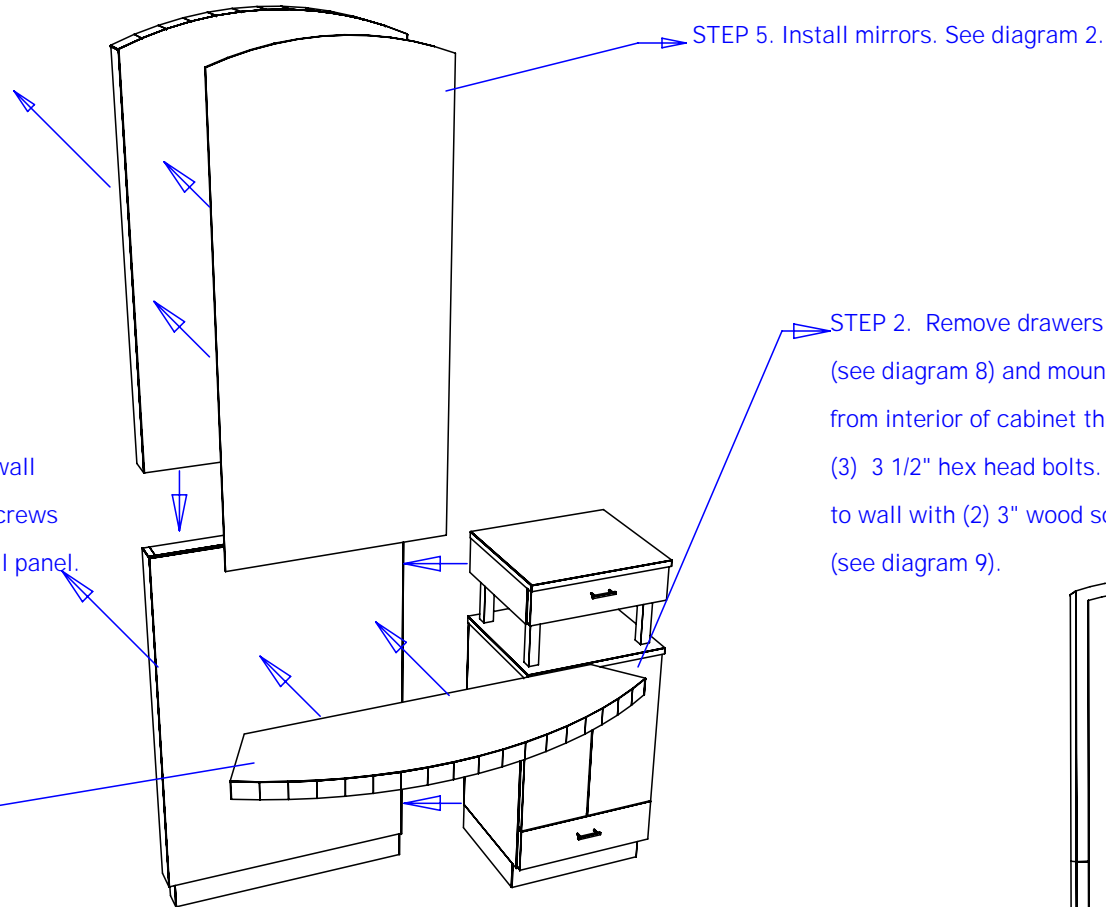


STEP 3. Mount mirror frame to wall panel with (3) 1/1"2" hex head bolts going through bottom of mirror frame into top of wall panel. Use a wrench to tighten.

STEP 1. Remove french cleat from back of wall panel. Mount cleat to wall using 3" wood screws into atleast two wall studs. Then install wall panel. See diagram 7.

STEP 4. See detail on next page




Quantity - QTY

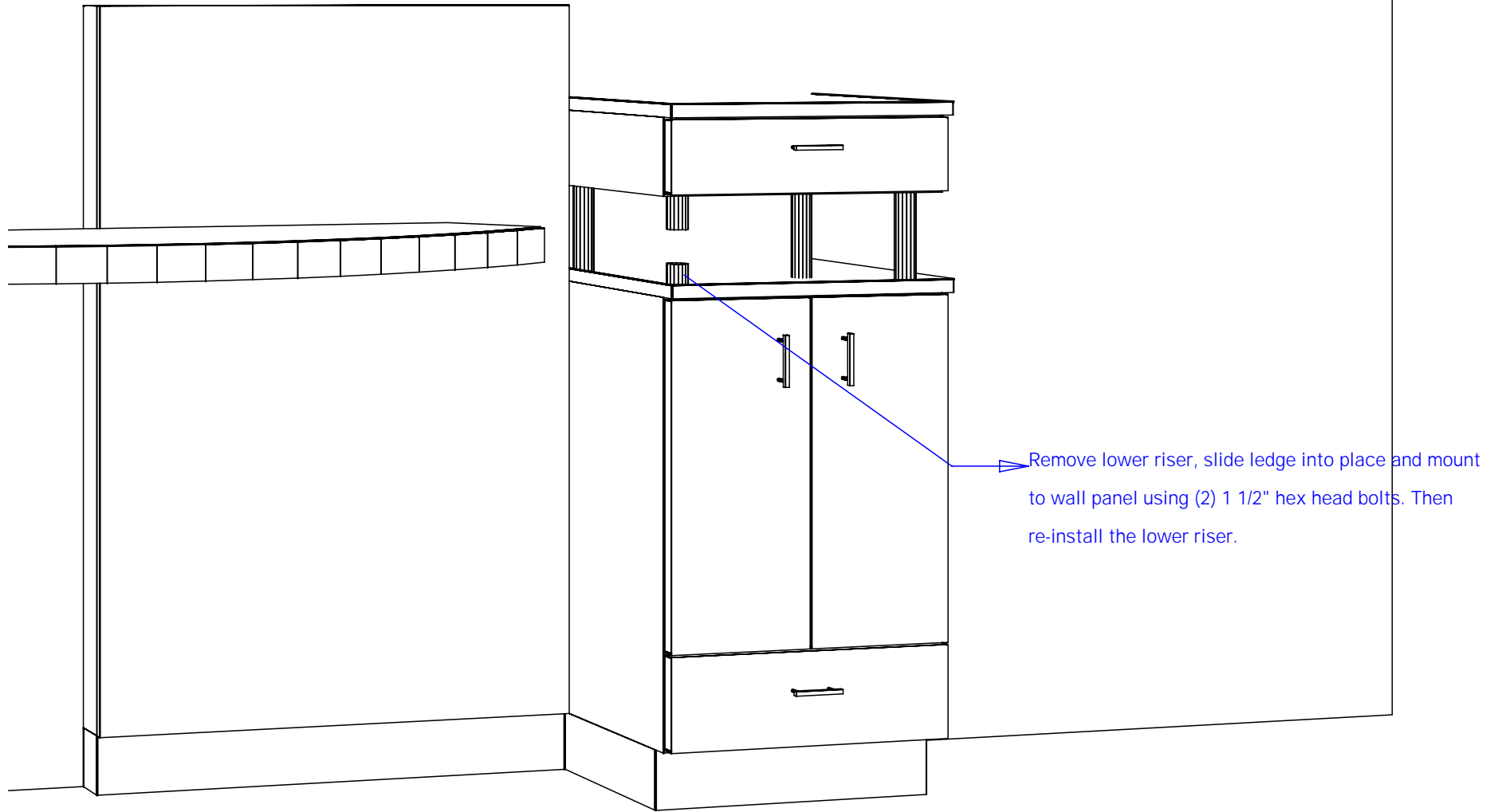
Finish Schedule - 801-48-1

Face Color - Face Color
 Top Color - Ledge& Toe Color
 Toe Color - (Specify)
 Pulls - Premium Pulls
 Interior - White Melamine
 Other (Specify) -

Installation Notes:

1. All hardware needed for assembly is included.
2. Large items are preassembled at the factory to ensure proper alignment. Items are then disassembled into managable sections for shipping purposes and ease of reassembly.
3. Shipping cleats need to be removed before installation. These cleats are installed to prevent damage.

 Collins Manufacturing 2000 Bowser Rd. Cookeville TN 38506		
Title: Cust Name		
Size:	#: SoNbr	Drawn By: Engr
Date: 09/14/06	Sheet #: 10	




Quantity - QTY

Finish Schedule - 802-66-1

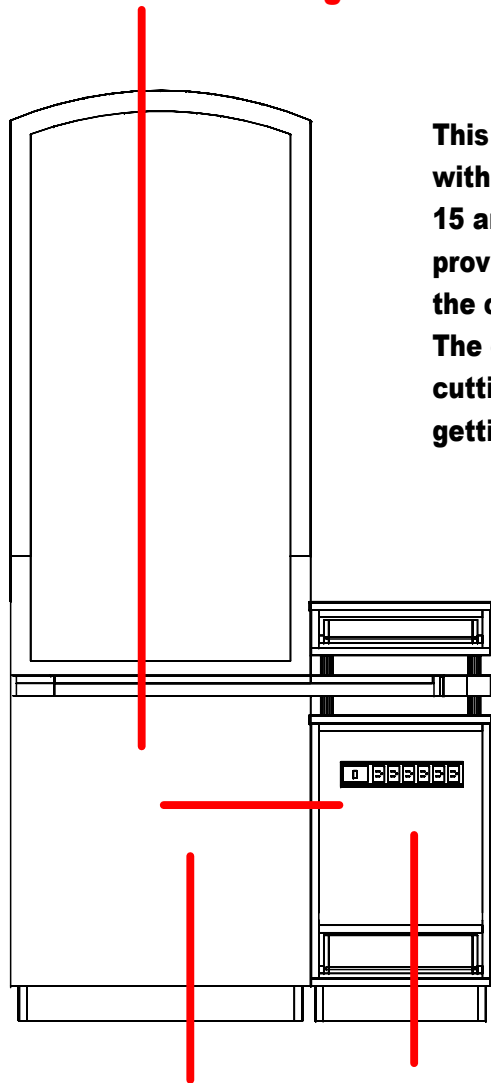
Face Color - Face Color
 Top Color - Toe-Ledge Color
 Toe Color - (Specify)
 Pulls - PREMIUM
 Interior - Interior
 Other (Specify) -

Installation Notes:

1. All hardware needed for assembly is included.
2. Large items are preassembled at the factory to ensure proper alignment. Items are then disassembled into manageable sections for shipping purposes and ease of reassembly.
3. Shipping cleats need to be removed before installation. These cleats are installed to prevent damage.

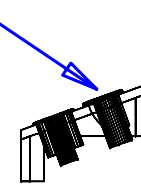
 Collins Manufacturing 2000 Bowser Rd. Cookeville TN 38506		
Title: Cust Name		
Size:	#: SoNbr	Drawn By: Engr
Date: 09/12/06	Sheet #: 13	

**Electric can be ran from the ceiling or floor
and through wall**



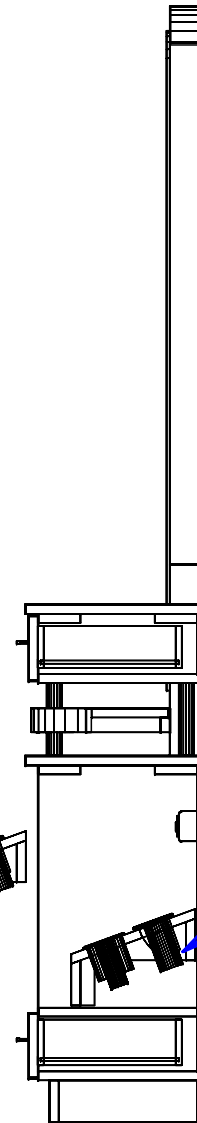
This item includes a six outlet power strip with a 4' cord. The outlet strip is rated at 15 amps. The electrician is responsible for providing and mounting an outlet inside the cabinet for the power strip to plug into. The electrician is also responsible for cutting an appropriate entry point for getting power into the cabinet.

Extended Position



Power Strip

Closed Position



Finish Schedule - 801-48

Face Color -
Top Color -
Toe Color -
Pulls -
Interior -
Other (Specify) -

This drawing is the property of Collins Manufacturing Company and is protected under copyright law.

Collins Collins Manufacturing
2000 Bowser Rd.
Cookeville TN 38506

Title: **801-48 Electrical**

Size: #: Drawn By: **B**

Date: 12 Sheet #: