



PRODUCT SPECIFICATION SHEET

Part #: 851-101

Description: Color Pro Color Center



with
optional
signage

Collins has been designing, producing, and encouraging the use of *Professional Color Centers* since 1998... all for the professional colorist.

The new Colour Pro Center Bar can be ordered and manufactured with the features and the size that's right for your salon. Great tool for organizing the most profitable area of the salon.

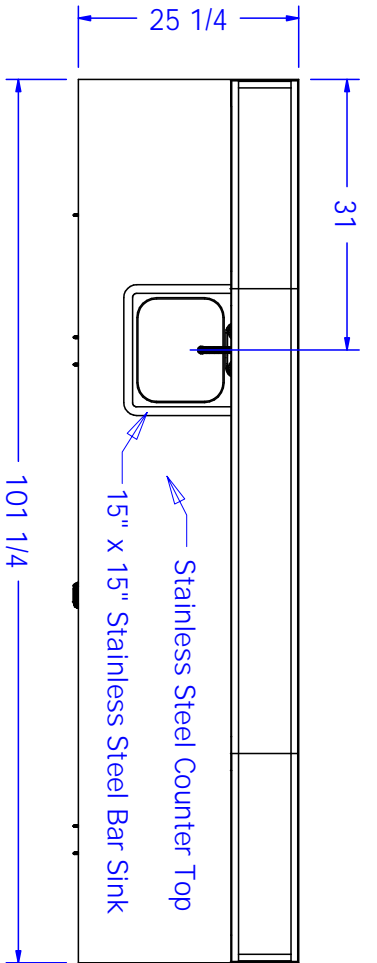
Features acrylic color organizers, a stainless steel worksurface and backsplash, four large drawers w/ ball-bearing slides, a stainless steel sink w/ goose-neck fixtures and paddle handles, and tons of storage.

Pictured unit, above, measures 101"W x 21"D x 90"H & can also be ordered with standard grade laminates in lieu of the stainless steel.

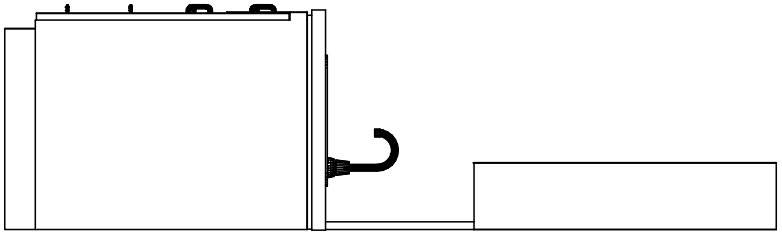
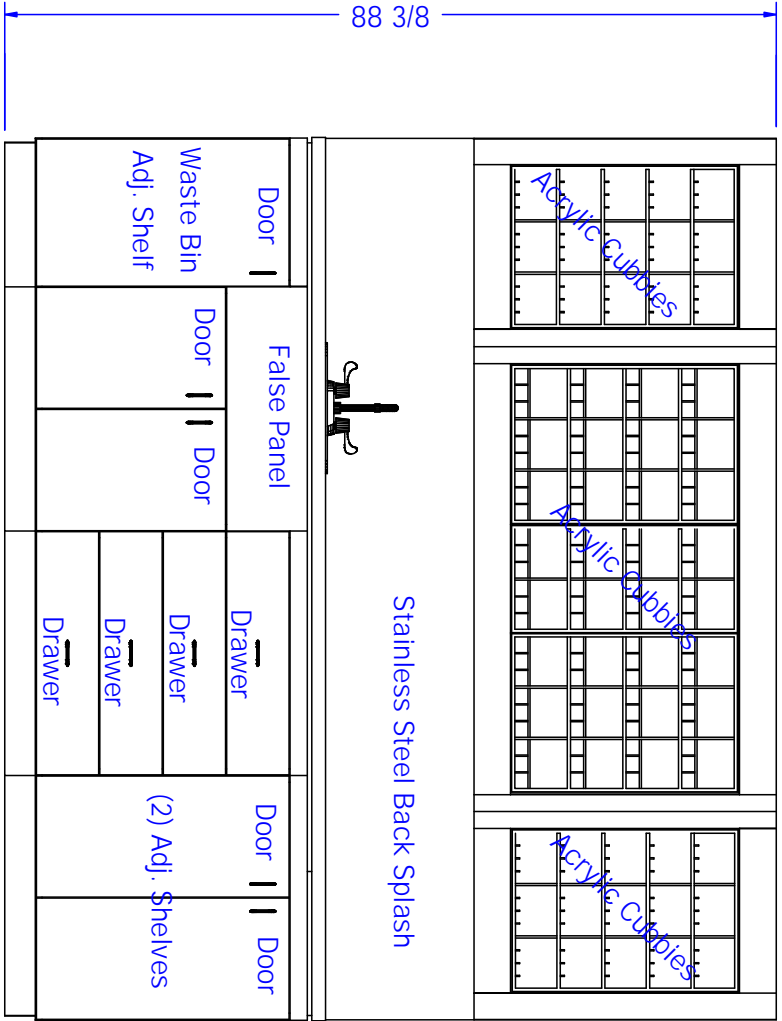


Optional Features:

- Cubbies, as shown, configured for Redken color
- Optional Upper Back-Lit Signage - Decals by others
-
-



Center Line of Sink
31" from left side,
13" from the wall;
drain should be roughed
at 18" from floor



Finish Schedule – 851-101-1
 Face Colo
 Top Color -
 Toe Color -
 Reveal
 Hardware - Brushed Chrome Wire Pulls
 Interior - Black Melamine
 Other (Specify) - N/A

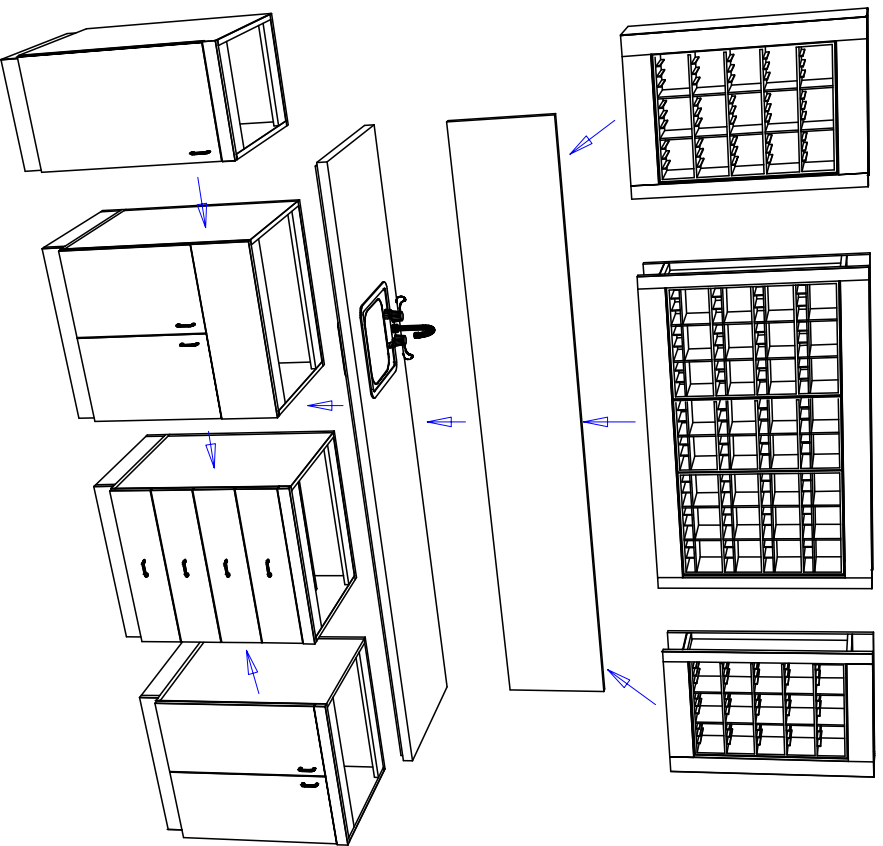
**Preliminary
 Not For Construction**

This drawing is the property of Collins Manufacturing Company and is protected under copyright law.

Approved as drawn.
 Approved w/ changes noted.
 Not approved - re-submit.
 Signature _____
 Company _____ Date _____

Collins Manufacturing
 2000 Bowser Road
 Cookeville, TN 38506

Title:		Drawing Number:		Drawn By:	
Size: NTS		69462		MIKE	
Date:		Sheet		2 of 13	



Attach adjacent cabinets, end panels, and support legs by fastening through the pre-drilled holes with the provided connector bolts. These bolts will thread into a factory installed threaded fastener, t-nut or provided matching connector nut depending upon the application and visibility of the fasteners. Some applications may require drilling holes on-site and the use of 1/4" wood screws and decorative washers.

This item is attached to the wall with wood screws. 3" wood screws and decorative washers are provided for wood framed walls. Fasteners for other wall types are to be obtained locally. Screw through the back panel in locations which will be inconspicuous after installation. Suggested locations include: under shelves, behind drawers, and locations hidden by products or supplies.

Counter top joints and seams in proximity of sinks, shampoo bowls, or pedicure basins are to be sealed on-site with clear silicone caulk to prevent water intrusion and damage.

Finish Schedule – 851-101-1

- Face Color -
- Top Color -
- Toe Color -
- Reveal / Accent Color -
- Hardware - Brushed Chrome Wire Pulls
- Interior - Black Melamine
- Other (Specify) - N/A

General Notes:

1. All counter tops are to be made removable wherever possible.
2. Items must be broken into manageable sections For Shipping. Mark For Ease Of Reassembly.
3. Install Shipping Cleats Wherever Possible To Prevent Shipping Damage.
4. Purchased items Must Be Trial Fit Before Shipping.

Collins Manufacturing
 2000 Bowser Road
 Cookeville, TN 38506

Title			
Size:	Drawing Number:	Drawn By:	
NTS	69462	MIKE	
Date:	Sheet	13 of 13	