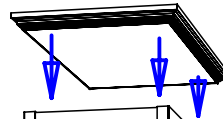
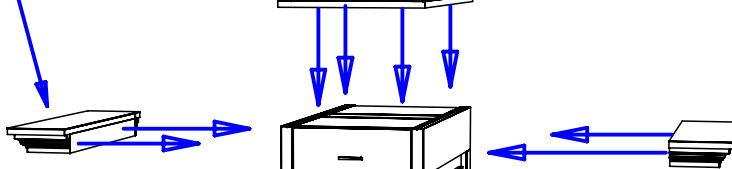


STEP 2. Attach crown cap to top of upper cabinet with (6) 1 1/4" wood screws through top or crown cap into to upper cabinet panels.

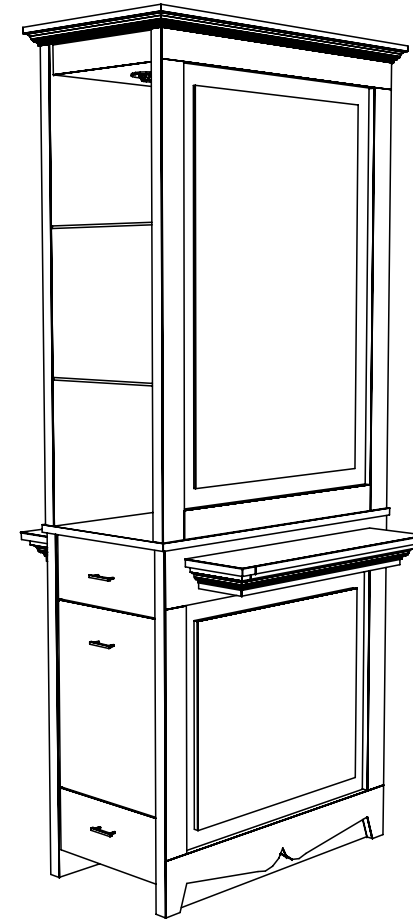
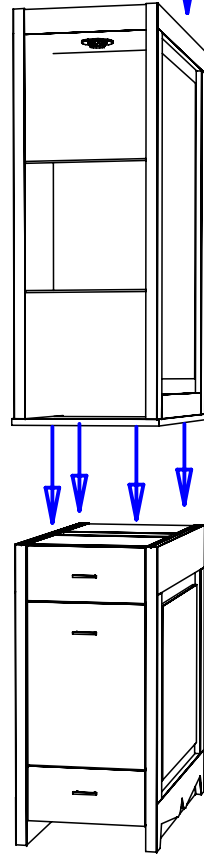


STEP 3. Set upper cabinet onto base cabinet. Mount by screwing (8) 1 1/2" wood screws with beauty washers into pre-drilled holes in the interior of the base cabinet top.

STEP 4. Attach each purse ledge with (2) 1 1/2" hex head bolts by screwing Screw through ledge into t-nuts that are inbedded in the base cabinet.



STEP 1. Set base cabinet in final location. Remove drawers from base cabinets see diagram 8.



Quantity - QTY

Finish Schedule - 883-36-1

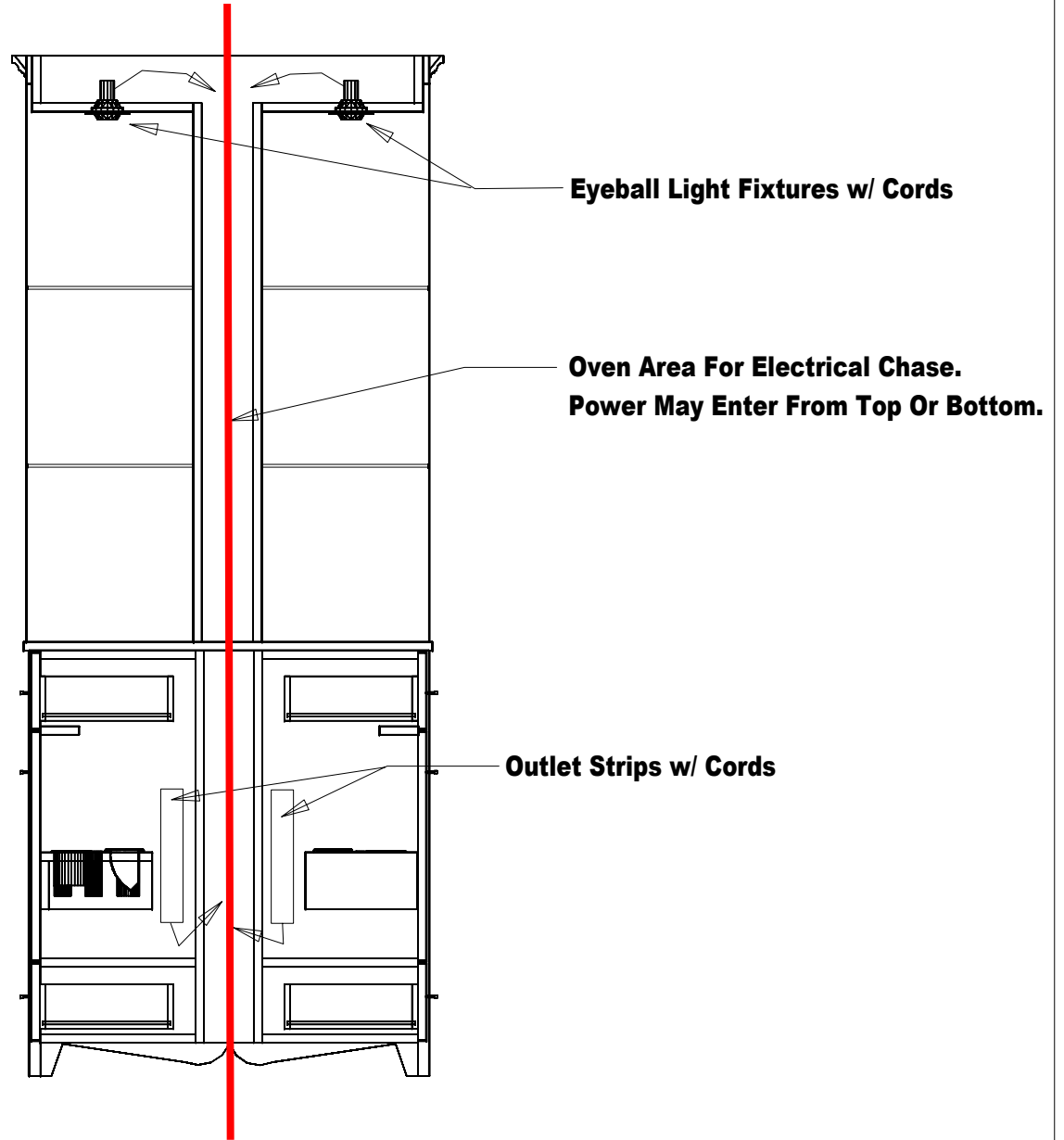
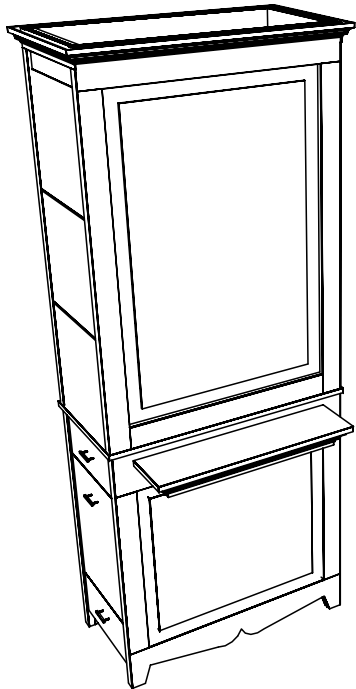
Face Color - Face Color
 Top Color - Top Color
 Toe Color - (Specify)
 Pulls - Chrome Wire
 Interior - White/Face Color
 Other (Specify) -

Installation Notes:

1. All hardware needed for assembly is included.
2. Large items are preassembled at the factory to ensure proper alignment. Items are then disassembled into manageable sections for shipping purposes and ease of reassembly.
3. Shipping cleats need to be removed before installation. These cleats are installed to prevent damage.

Collins Collins Manufacturing
 2000 Bowser Rd.
 Cookeville TN 38506

Title: CustName		
Size:	#: SoNbr	Drawn By: ENGR
Date: 09/30/06	Sheet #: 8	



Finish Schedule

Face Color -
 Top Color -
 Toe Color -
 Pulls -
 Interior -
 Other (Specify) -

collins		Collins Manufacturing 809 E 20th Street Cookeville TN 38501	
Title: 883-36 Bradford Island			
Size:	#: 883-36	Drawn By:	
Date: 03/19/03	Sheet #:		6