

Preliminary
Not For Construction

This drawing is the property of Collins Manufacturing Company and is protected under copyright law.

Finish Schedule - 927-48-1
Face Color - Face Color
Top Color - Top Color
Toe Color - Toe Color
Pulls - Hardware
Interior - White Melamine
Other (Specify) -

This drawing represents Collins Manufacturing Company's understanding of the desired item as was previously priced & ordered. Your signature indicates you have reviewed the drawing; and your approval will authorize Collins to initiate the acquisition of materials & subsequent production. More than modest changes may affect the price and/or manufacturing lead time.

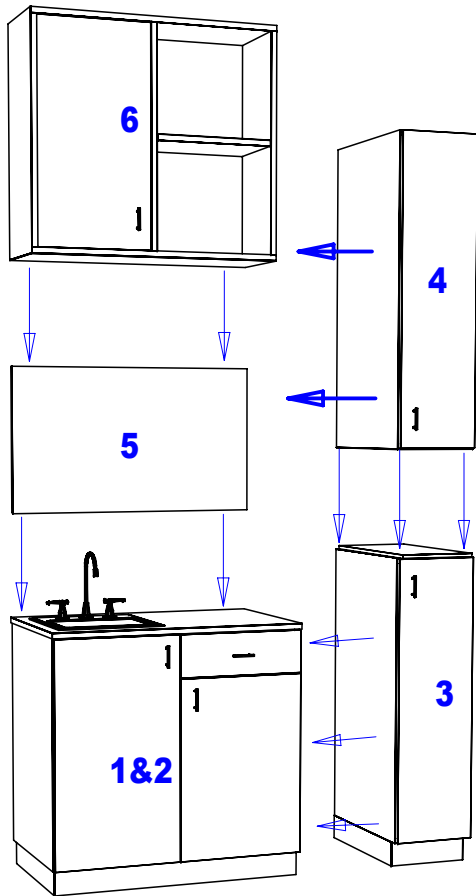
Approved as drawn.
 Approved w/ changes noted.
 Not approved - re-submit.

Signature _____
 Company _____ Date _____

Collins Collins Manufacturing
2000 Bowser Rd.
Cookeville TN 38506

Title: **427-48 Plumbing**

Size:	#:	Drawn By: Engr
Date:	Sheet #: 7	



STEP 1. Cut hole in base cabinet for plumbing.

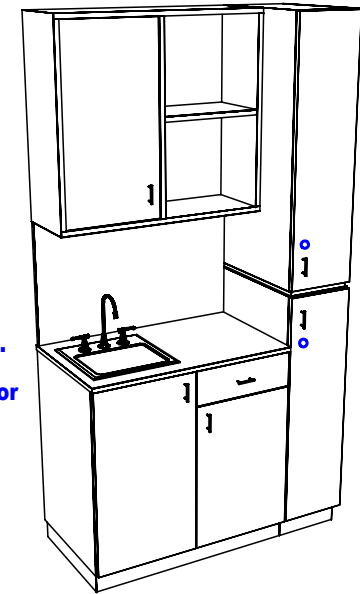
STEP 2. Remove drawer (see diagram 8), and set base cabinet in place against wall. Mount cabinet to wall using (4) 3" wood screws with beauty washers through interior back panel into wall studs (see diagram 9).

STEP 3. Set lower tower cabinet against base cabinet and wall. Bolt cabinets together with (4) 1 1/4" beauty bolts. Then mount tower cabinet to wall using (2) 3" wood screws with beauty washers through interior back panel into wall studs.

STEP 4. Set upper tower cabinet on top of lower, and align. Fasten them together using (4) 1 1/2" wood screws with beauty washers up through interior top of lower cabinet into bottom of upper tower cabinet.

STEP 5. Mount the backsplash. Apply liquid nail or a construction adhesive to back. Set backsplash on top of base cabinet and butt against tower cabinets, then press against wall. Apply a bead of silicone in the seams to prevent water damage.

STEP 6. Set upper cabinet in place against top of backsplash and tower cabinets. Bolt cabinet to upper tower cabinet with (4) 1 1/4" beauty bolts through side panels. Mount cabinet to wall using (4) 3" wood screws with beauty washers through interior of cabinet into wall studs.



Finish Schedule - 927-48-1

Face Color - Face Color
 Top Color - Top Color
 Toe Color - (Specify)
 Pulls - Hardware
 Interior - White Melamine
 Other (Specify) -

Installation Notes:

1. All hardware needed for assembly is included.
2. Large items are preassembled at the factory to ensure proper alignment. Items are then disassembled into manageable sections for shipping purposes and ease of reassembly.
3. Shipping cleats need to be removed before installation. These cleats are installed to prevent damage.

Collins Collins Manufacturing
 2000 Bowser Rd.
 Cookeville TN 38506

Title: **427-48 Assembly**

Size: _____ Drawn By: **Engr**

Date: _____ Sheet #: **8**