

# Adjust-a-Sink®

• THE ADJUSTABLE HEIGHT SHAMPOO BOWL FOR SALONS •



*The Ultimate in Stylist and Client Comfort!*

The Adjust-a-Sink® is an ADJUSTABLE HEIGHT SHAMPOO BOWL that truly works! It can be easily adjusted a full 12" so that both the client and stylist experience the ultimate in Comfort and Accessibility.



Easy-to-Use Foot Pump



Easy-to-Install



Works with Salon Chair



Works with Wheelchair

# Adjust-a-Sink®

The Ultimate in Comfort and Accessibility



## FINALLY! THE SOLUTION FOR CLIENT DISCOMFORT AND STYLIST BACK PAIN.

The Patented Features of the Adjust-a-Sink® Allow the Stylist to Adjust the Height of the Shampoo Bowl a Full 12" Providing a Comfortable Fit and Sitting Position for the Client and a Comfortable Working Height for the Stylist **(Bowl Height Adjusts from 34" - 46" from the Floor)**

### FOR THE SALON OWNER:

The Adjust-a-Sink® ensures your salon differentiates its services by providing the ultimate in adjustable height comfort during the shampoo treatment. **The Adjust-a-Sink® Has a Low Cost of Ownership - It Takes Up Less Space and Costs Less to Install Than a Backwash Unit, Improves Client and Stylist Retention, and Reduces Liability.**

### FOR THE STYLIST:

The Adjust-a-Sink® allows the stylist to have control over the sink by being able to easily raise and lower the shampoo bowl to the perfect height between the client and the bowl. This enables the stylist to stand upright - not bending and stretching excessively during the shampoo and rinse. **The Adjust-a-Sink® Helps to Eliminate Lower Back Pain and Shoulder Strain.**

### FOR THE CLIENT:

**The Client Sits More Upright with Less Strain on Their Lower Back and Neck.** This ensures they experience the ultimate in comfort and stay dry during the shampoo treatment.

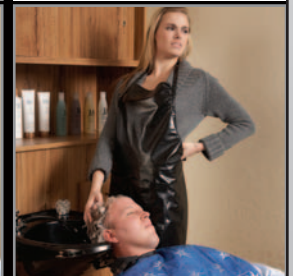
### GENERAL SPECIFICATIONS:

Overall Size: 22" wide x 36" high (down) x 27" deep  
22" wide x 48" high (up) x 27" deep  
Bowls: Marble Products 3000W, Belvedere 8400  
- Over 40 Colors to Choose From  
Back Splash: Standard Colors are Black, White, Gray, Almond; We Can Match Any Custom Laminate  
Foot Pump: Manufactured in the USA - 5 Year Warranty  
The Adjust-a-Sink® is UPC Listed (File #5496) for Durability

#### Experience This...



#### Not This!



**Only the Adjust-a-Sink® Provides  
This Level of Stylist and Client Comfort!**