

# DUET

STYLING CHAIR  
ST-E20

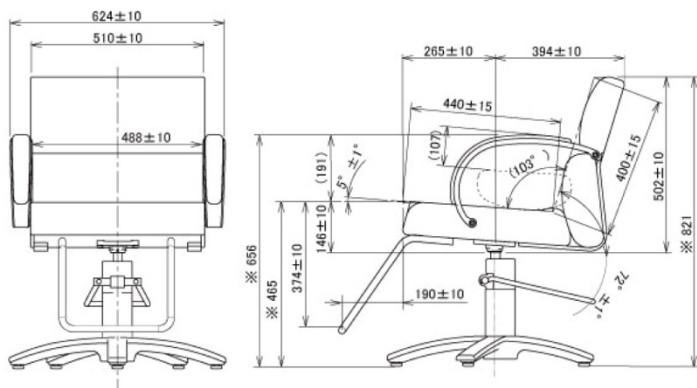


**TAKARA  
BELMONT**

TODAY. TOMORROW. ALWAYS.

# DUET STYLING CHAIR

The Duet Styling Chair by Takara Belmont makes a bold statement in chair design. With a pitch perfect harmony of durability, style and comfort, this little chair with a big voice offers a full cadence of notable features. The removable lumbar support cushion doubles as a booster seat to accommodate a family of clients and makes clean-up a breeze. Added steel reinforced back supports sets the stage for the Duet to complete an entire tour of services (available in Standard Black, KP2 Dark Brown and Grade 1 & 2 vinyl upholstery).



## DUET

Standard features include a 217 footrest, plastic back cover and booster seat convertible lumbar support cushion. Optional features include a 317 footrest and Euro style footrest.

## APPROXIMATE CHAIR SPECIFICATIONS

Dimensions: 24.5" W x 25.9" D x 32.3" H  
Weight\*: 44 lbs.  
Inside Width†: 19.21"

\*calculated with an X5C base and 217 footrest  
†measurements from inside arm to arm

Call your Takara Belmont representative for more information.

The advertisement features a central graphic of a globe with a red and white color scheme, surrounded by a film strip that shows various salon interior scenes. In the top left corner, an astronaut is depicted floating above the text "Best Price, Best Selection, on the Planet". The bottom of the ad contains the company logo "Salon Equipment" with the tagline "One Source, One Choice, One Company, Since 1982™". Below the logo, the contact information "800.393.2679" and "www.absalonequipment.com" is prominently displayed. The background of the ad is a collage of salon-related images and technical diagrams.