

### JR126 JUAREZ VANITY INSTALLATION INSTRUCTIONS

#### IMPORTANT NOTES:

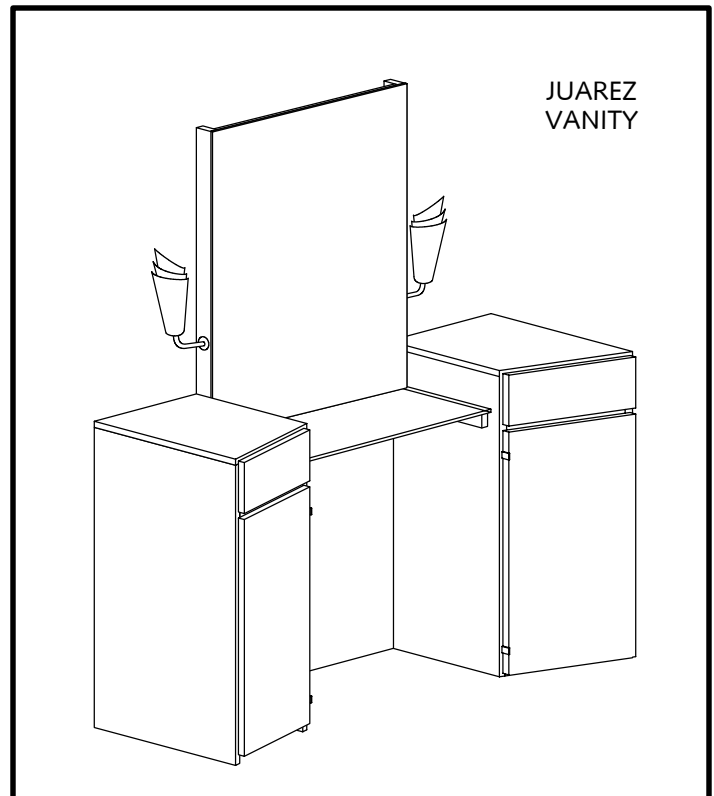
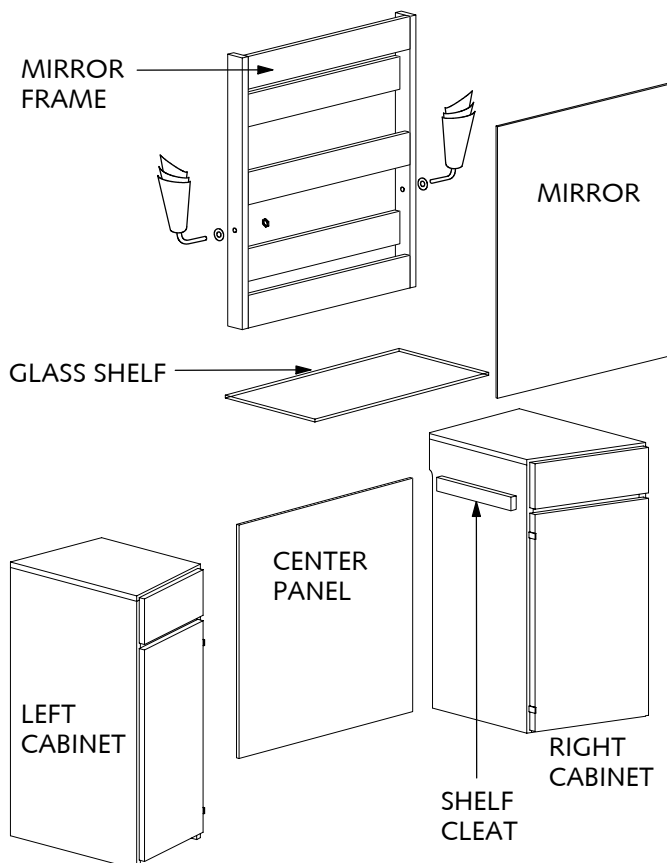
Read through the instructions before you begin. Cabinetry is heavy. Move with care.

Any conformance with LOCAL CODES or INSPECTIONS is the RESPONSIBILITY OF THE PURCHASER.

Because we cannot anticipate all types of wall and floor constructions, you must obtain some fasteners for the installation locally.

Unpack vanity components carefully. Wear eye protection when cutting carton bands.

1. Determine the location for the Vanity.
2. Place the Left and Right Cabinets and Center Panel at this location. Leave space between the Cabinets and the wall.



3. Fasten the Center Panel to the Cabinets with screws provided.
4. Make electrical connections for the outlet.
5. To fasten the Vanity to the wall:
  - Locate studs or structural members in the wall behind the Vanity location.
  - Mark the stud locations on the Back Panels of the Vanity and drill clearance holes for your fasteners.
  - Remove the Drawers from the Vanity.
  - Move the Vanity assembly into place against the wall. Move the assembly carefully to keep the units together
  - Attach the Vanity with your fasteners through the Back Panels into studs or structural members in the wall. (Obtain fasteners locally-see note above.)

6. Place the Glass Shelf on the shelf cleats, between the cabinets.
7. Set the Mirror Frame on the Shelf. Place a thin cardboard or wood shim under the Mirror Frame.
8. Mark and drill the back cross braces of the Mirror Frame for your fasteners. Locate the holes so fasteners will engage a structural member in the wall.
9. Install the mirror Frame with your fasteners.
10. Install and connect the Light Fixtures.
11. Install the Mirror glass. Remove the Mirror glass from the carton.

12. Place the top edge of the Mirror into the upper J-Channel on the Mirror Frame.
13. Swing the lower edge of the Mirror back against the Mirror Frame and Gently lower it into the lower J-Channel.

NOTE: The standard Left Cabinet is a "Hair-Sweep" cabinet. There is no bottom shelf. This is designed so the stylist can sweep hair clippings into the bottom of the cabinet between clients, and then sweep or vacuum out the cabinet at his/her convenience, during less-hectic periods.

