

# MIRAGE® EVO 250 PEDICURE SYSTEM

Welcome to the world of the Mirage® Pipeless Pedicare System from Belvedere USA LLC.

The Mirage® 250 EVO is a sophisticated piece of equipment and it requires preventative maintenance and care.

## MIRAGE® PEDICARE INSTALLATION INSTRUCTIONS

**IMPORTANT!** Read through ALL the installation instructions before starting!

### UNIT LOCATION REQUIREMENTS

#### STRUCTURAL:

1. The floor must be level.
2. The floor must be strong enough to support the Mirage® Pedicare System.

#### ELECTRICAL:

1. The Mirage® requires a dedicated 120 volt, 60 Hz 15 amp. GFCI-protected ground circuit to supply power to the unit.
2. The dedicated circuit must be installed by a qualified electrician according to local codes.
3. BE SURE the circuit is correctly polarized.
4. The surge protector provided with the Mirage® MUST be used.

#### PLUMBING:

NOTE: Plumbing can enter the Mirage® through the wall behind the unit, or through the floor under the back tunnel. See the rough in diagrams on the following pages.

#### WATER SUPPLY:

1. The Mirage® connects to the hot and cold 1/2 NPT water supply lines. These lines should be equipped with shut-off valves supplied and installed by the local plumber.
2. The Mirage supply lines are marked with red (hot) and blue (cold) dots on the back of the unit.
3. Seal the connections with Teflon® tape.

**NOTE: DO NOT USE PLUMBER'S PUTTY** which will clog the system.

#### DRAIN

1. A 1-1/4" pvc stub extends approximately 2" behind the Mirage®. The drain must be hard plumbed.

**NOTE: DO NOT USE PLUMBER'S PUTTY** which will clog the system.

**IMPORTANT NOTE:** If connecting to the wall drain, the stub MUST NOT be more that 3-1/4" (to center-line of pipe) above the finished floor. See rough-in plumbing diagrams.

### WATER SUPPLY GUIDELINES:

NOTE: Water requirements may vary according to usage. Consult your plumbing contractor.

#### Chart A:

For Mirage pedicare only (NOT including vichy showers, shampoo bowls, wash rooms, etc.):

Number of Units	Supply Line Size	Water Heater Capacity	Recovery Rate (gallons pre hour)
1-2	3/4"	50 Gallons	100
3	1"	75 Gallons	150
4	1 to 1-1/4"	100 Gallons	200

More than four units: minimum 50 gallons capacity for every two Mirage® units.

#### Chart B:

For hair styling salons with shampoo bowls PLUS one Mirage® pedicare:

Number of Bowls Plus one Mirage	Supply Line Size	Water Heater Capacity	Recovery Rate (gallons pre hour)
1-2	3/4"	75 Gallons	150
3-5	1"	100 Gallons	200

Six or more shampoo bowls: Install a separate water heater for the Mirage® pedicare stations per Chart A.

NOTE: Rapid recovery water heater REQUIRED. The recovery rate should be equal to at least two times the water heater capacity per hour.



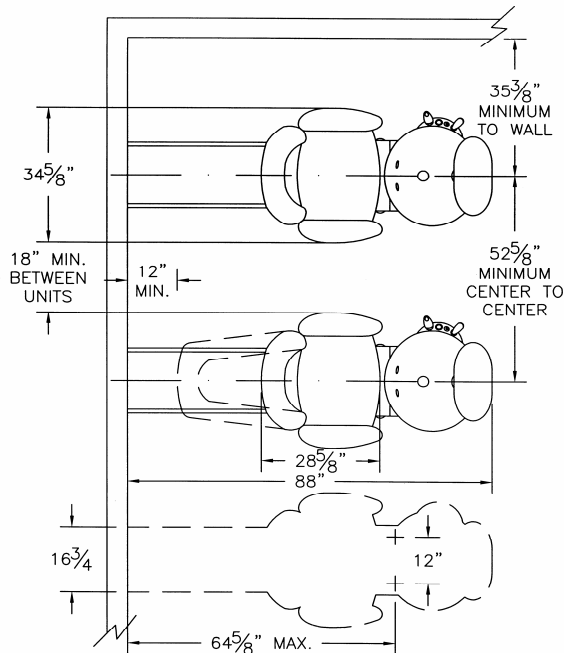
# MIRAGE® EVO 250 PEDICURE SYSTEM

ALL PLUMBING MUST CONFORM TO LOCAL CODES. CONFORMANCE WITH THE INSPECTIONS OR LOCAL CODES IS THE RESPONSIBILITY OF THE PURCHASER. THIS MAY INCLUDE BUT NOT BE LIMITED TO WATER SUPPLY LINES, DRAIN LINES, BACKFLOW PREVENTION DEVICES AND OTHER PLUMBING FIXTURES REQUIRED BY YOUR JURISDICTION.

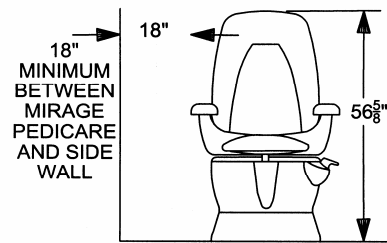
Failure to comply with local codes could result in possible fines and expensive plumbing retrofits which could delay the opening of your salon or spa. It is impossible for the manufacturer to keep abreast of rapidly changing local codes. Therefore, it is the responsibility of the owner and/or the local plumber to ensure that the installation conforms to local codes.

## PLUMBING AND ELECTRICAL ROUGH-IN GUIDELINES

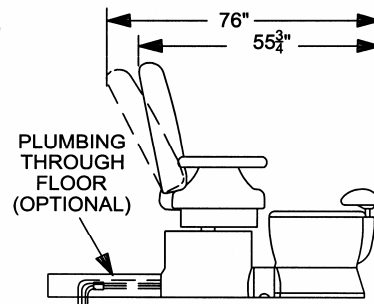
### DIMENSIONS FOR MIRAGE PEDICURE PLACEMENT:



### FRONT VIEW:

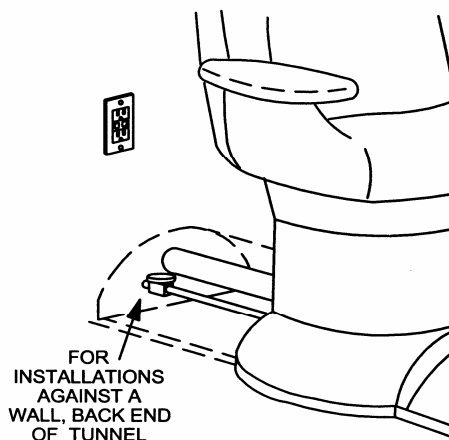


### SIDE VIEW:



### PLUMBING THROUGH THE WALL:

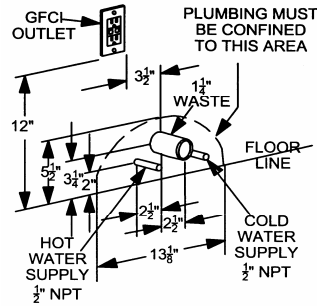
If your plumbing comes through the wall behind the Mirage®, trim off the back, closed end of the tunnel. Minimum length: 12" with standard chair (24" with optional reclining-back chair). This distance is required to allow the chair to turn without bumping the wall.



# MIRAGE® EVO 250 PEDICURE SYSTEM

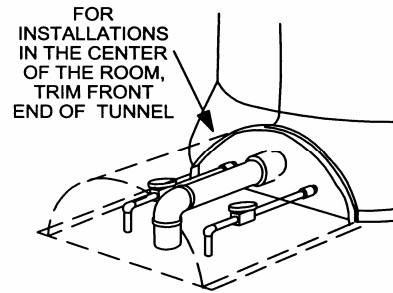
## VIEW FACING WALL BEHIND MIRAGE®

NOTE: Plumber should install shut-off valves on water supply lines according to local codes. Shut-off valves are NOT included. Supplied by others, **obtain valves locally.**



## PLUMBING THROUGH THE FLOOR:

If your Mirage® is in the center of the room with the plumbing through the floor, the tunnel only need to be long enough to cover the pipes.



NOTE: If installed in the center of the room with plumbing coming up through the floor, DO NOT cut off the back, closed end of the tunnel. If the tunnel must be shortened, trim the front, open end of the tunnel. This will maintain a finished appearance on the end of the tunnel.

**WARNING:** Modifying, cutting or altering ANY internal plumbing or other components will VOID THE WARRANTY!

## INSTALLATION:

**WARNING: ALTERING OR MOVING ANY FACTORY-INSTALLED PLUMBING LINES OR FIXTURES WILL VOID THE WARRANTY!**

1. For safety and proper operation, the Mirage® Pedicare MUST be fastened to the floor. The plumbing alone WILL NOT hold the Mirage® in place.
2. "Hanger bolts" to fasten your Mirage® Pedicare System to the floor. Lead anchors are for concrete or masonry floor.
3. Drill mounting holes in the floor using the diagram provided. Use care when measuring .

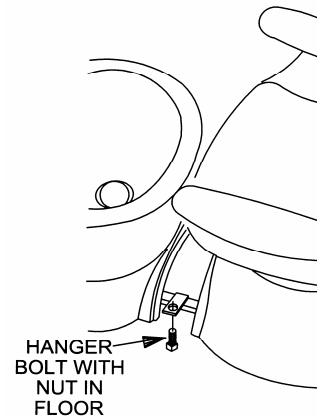
A. For wood floors, use a 3/16" regular bit to drill a pilot hole for the hanger bolts.



B. For concrete or masonry floors, use a 1/2" masonry bit to drill holes for the lead anchors.



4. If using anchors, insert them into the 1/2" holes in the floor. You may have to tap them into the holes with a hammer.
5. Screw the hanger bolts into the pilot holes or anchors. Use 7/16" wrench on the hex nut that is already on the hanger bolt to screw it to the floor. Screw the hanger bolts into the anchors.
6. After the hanger bolts are screwed in, turn a second nut onto each hanger bolt, with the built-in lock washer facing UP. Turn the nut down until it almost touches the first nut.
7. Set the Mirage® into position, place the frame mounting holes over the hanger bolts.



# MIRAGE® EVO 250 PEDICURE SYSTEM

**CAUTION:** BE SURE there are not plumbing or electrical components or lines under the frame!

8. Fasten the Mirage® in place.
  - A. Turn the second nut that you installed on the hanger bolts counter-clockwise until they just touch the frame mounting brackets.
  - B. Thread a third nut onto each hanger bolt and tighten it down to secure the Mirage® in place.
9. You are now ready to connect plumbing and electrical lines.

## PLUMBING

A qualified plumber should make all plumbing connections according to local plumbing and building codes.

1. Carefully connect the flexible hot and cold water supply lines to the hot and cold shut-off valves (installed and provided by your local plumber) in the wall. The Mirage® hot and cold lines are equipped with 1/2" NPT fitting. The Mirage® supply lines are marked with red (hot) and cold (blue) dots.

**IMPORTANT:** Seal the hot and cold connections with Teflon® tape.

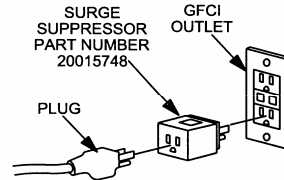
**DO NOT** use plumber's putty, which will clog the system.

2. Connect the 1-1/4" (nominal) drain line to the drain stub.

**WARNING:** MODIFYING, CUTTING OR ALTERING ANY INTERNAL PLUMBING OR OTHER COMPONENTS WILL VOID THE WARRANTY!

## ELECTRICAL

1. If your outlet is not equipped with a Ground-Fault Circuit Interrupter (GFCI), a qualified electrician should install a GFCI receptacle or GFCI circuit breaker in the electrical service panel ("fuse box") according to local electrical and building codes.
2. Plug the surge suppressor provided into the Ground-Fault Circuit Interrupter (GFCI) equipped outlet or circuit. Then plug the Mirage power cord into the surge suppressor.



3. If the surge suppressor is working properly, the window on top will show yellow. If it shows black, a surge occurred and the suppressor must be replaced. Order a replacement surge suppressor from your distributor or Belvedere showroom (Belvedere part number 20015748) or purchase a new surge suppressor from a local electronics dealer.

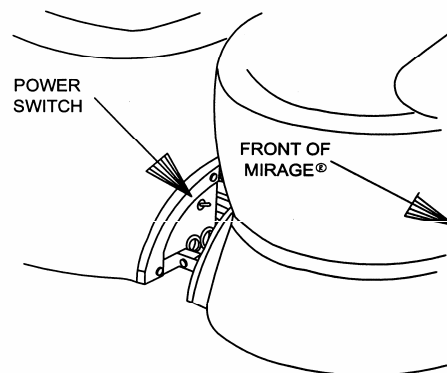
## FINAL ASSEMBLY

1. If your Mirage® is installed against a back wall, you will have to cut out the back of the tunnel to clear the plumbing and electrical lines. Use tin-snips or a jig saw to cut the back of the tunnel.
2. Set the tunnel in place. If designed, you can fasten the tunnel to the floor.
  - A. Obtain fasteners suitable for your floor construction.
  - B. Measure and mark the hole locations on the tunnel flange and floor to your fasteners.
  - C. Drill appropriate-sized holds in the floor and tunnel flange for your fasteners.

## MAIN POWER SWITCH:

The main power switch is located under the center access panel. The switch is visible from the right side of the Mirage® 250 EVO Pedicare.

1. Lift the center access panel and slide it to one side.
2. Flip the switch to the UP position to turn on the main power.
3. **VERY IMPORTANT!** At the end of the day. ALWAYS turn the main power **OFF!**



# MIRAGE® EVO 250 PEDICURE SYSTEM

## WARRANTY

Belvedere USA LLC warrants its products to be free from defects in material and workmanship for a period listed below (except misuse or mishandling) from the date of delivery to the customer. The Company's obligation and purchaser's remedy pursuant to this warranty are limited to repair or replacement, at the company's option, F.O.B. shipping point. Because commercial standards allow color variation over which the Company has no control, this warranty does not extend to color, grain or texture. Fabrics are not warranted against fading, staining, soiling, crushing or wear, all of which are predominately influenced by user-created environment.

Petroleum-based cleaning solvents are harmful to fabrics and their use will cause the warranty to be VOID. This warranty applies only to the spa and salon originally purchased from an authorized company representative. Claims should be made through the authorized representative from whom the equipment was purchased. Belvedere has the right to request photographs or other objective evidence in determining warranty application.

**General Terms:**

Two year parts and labor on chair, metal upholstery and wood parts.

Two year parts and labor on chair back recline mechanism.

Two years parts and labor on electric motors and controls.

Two years parts and labor on other parts.

One year on heat and massage system.

No warranty on plastic against breakage.

**Porcelain Enamel Bowls:**

Five year on enamel on the bowl. NOT GUARANTEED against damage from diamonds.

One year on 522 fixture & 603 BFP.

**Service Parts:**

Belvedere USA LLC reserves the right to limit the number of years service parts are available.

**WARNING:** Conformance with LOCAL CODES or INSPECTIONS is the RESPONSIBILITY of the PURCHASER. Modifying, cutting or altering ANY internal plumbing or other components will VOID THE WARRANTY!