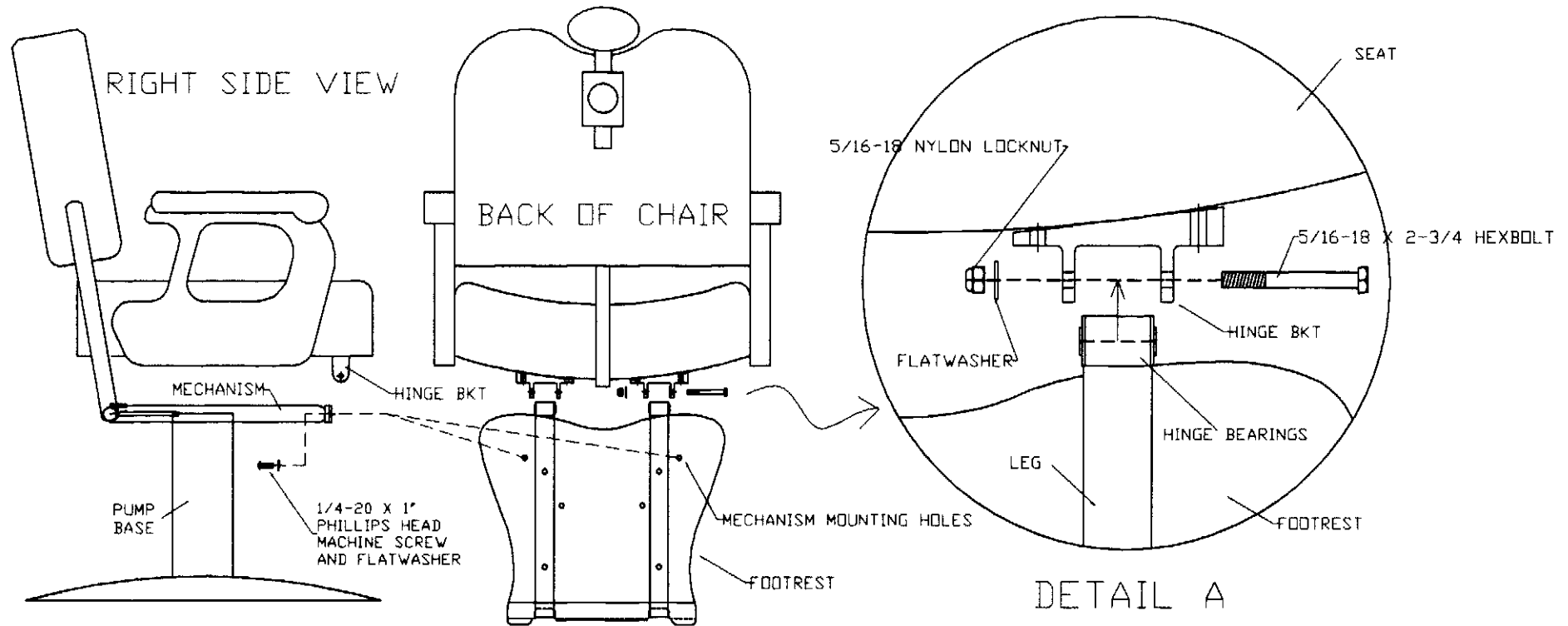


ASSEMBLY INSTRUCTIONS FOR 9060 COMMANDER



INSTRUCTIONS

TOOLS NEEDED: 1. #2 PHILLIPS HEAD SCREWDRIVER
2. 1/2 INCH WRENCH OR ADJUSTABLE WRENCH

1. LOCATE FOOTREST, REMOVE 2-3/4 " BOLTS, LOCKNUTS, AND FLATWASHERS FROM HINGE BEARINGS. SEE DETAIL A.
2. REMOVE BOTH 1/4-20 X 1" PHILLIPS HEAD MECHANISM MOUNTING SCREWS AND FLATWASHERS FROM BACK OF FOOTREST. SEE BACK VIEW OF CHAIR.
3. PLACE CHAIR ON PUMP BASE AND RAISE CHAIR TO MAX HEIGHT TO EASE ASSEMBLY PROCESS.
4. CUT CABLE TIES CONNECTING THE MECHANISM TO THE HINGE BRACKET. SEE RIGHT SIDE VIEW.
5. ATTACH MECHANISM TO FOOTREST USING THE METHOD SHOWN IN THE RIGHT SIDE AND BACK OF CHAIR VIEWS. LEAVE PHILLIPS HEAD SCREWS LOOSE AT THIS TIME. DO NOT TIGHTEN.
THE FOOTREST SHOULD PIVOT FREELY ABOUT THE MECHANISM AND REST ON THE FLOOR IN FRONT OF THE CHAIR.
6. LIFT ENTIRE FOOTREST ASSEMBLY INTO HINGE BRACKETS ON THE SEAT BOTTOM USING METHOD SHOWN IN DETAIL A. SECURE LOCKNUTS AND WASHERS ON 5/16 BOLTS ON BOTH HINGES. DO NOT OVER TIGHTEN
7. NOW COMPLETELY TIGHTEN THE PHILLIPS HEAD SCREWS ON THE FOOTREST.
8. INSTALL HEADREST
9. TEST TO ENSURE SMOOTH OPERATION.
10. YOUR 9060 COMMANNER CHAIR IS NOW READY FOR USE.